

ROCKET CITY ROCKS & GEMS



The Monthly News Bulletin of the Huntsville Gem & Mineral Society, Huntsville, Alabama

Volume 58 #2

"We'll go to the Moon for a Rock"

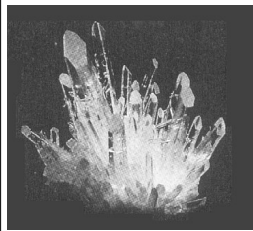
February 2026

INSIDE THIS ISSUE

Metalsmithing Corner	2
Rocket City Jewelers (RCJ)	3
Pebble Pups	4
Flint Knapping	5
Rock Swap	5
Spring Auction Flyer	6
Mineral of the Month	7
Field Trip - Big Bend TX	8
Brad's Bench Tips	9
Featured Member - Dr. Barnhart..	10
Executive Board & Committees.....	11
Activity Schedule.....	12
Calendar.....	13

HGMS Meeting - 28 Feb 2026 - 6:00

SHOW & TELL - Bring favorite three items from your collection - rocks, jewelry, fossils, minerals, oddities.



Web Page - www.huntsvillegms.org/ email - hsvgems@gmail.com



Huntsville Gem & Mineral Society (HGMS) 2025. Reprinting Rights are granted for all material (except for minutes of the meeting and copyrighted articles) to any organization officially affiliated with the American Federation of Mineralogical Societies (AFMS) or Southeastern Federation of Mineralogical Societies (SFMS), provided credit is given to the author, the original publication, and this newsletter.

Metal Smithing/Silver Group by Kathy Bowman & Shelley Curran



February Newsletter Article

March Project: Setting a Cab and Making a Chain

Monday March 2, 2026 5:00 -9:00pm This month's Class will be setting a Cabochon. We have Certified a lot of folks since the last time we offered this class, and this is one of the most useful skills.

We suggest that beginners start with an oval stone between 25x19 mm and 30x40 mm. Small stones and stones larger than 30x40 can be problems to set for beginners. Stone shapes that have points and angles, thin edges (no girdle) or have a girdle that is not cut with the correct angle can be difficult to set for beginners. Those that have had some experience setting a cab can use any shape they want.



Handmade chains can add a lot of value and appeal to your pieces. We will be teaching a simple "Dog bone" chain and a Paperclip chain. You can vary gauge of the wire and link size for the dog bone depending on the visual weight of the chain of the chain you want. You can also add color by adding beads between links of either chain. The construction of the Paperclip chain is a little more advanced since all the links must be soldered. We will have both copper and brass available. The cost of the class is TBD. Prices of materials have changed over the past 6 months so we need to do some calculations before we can figure the cost of materials.

We have 9 seats available. If sufficient interest we will hold another session the following Thursday.. To sign up for this class send email to HGMS@wildivystudio.com or sign up in person Monday and Thursday nights or at the HGMS meeting.

Certification/Safety Classes: The next Certification/Safety class is **March 17th**. Currently there are only a few names on the list.. Send your name and contact information (name, email address, and cell phone number (for text messages) to Certifications@wildivystudio.com. to get on the Wait List.. Seats will be filled in the order we receive them. We only have space for 9 students per class. Note: If your email is requesting a seat for more than one student, I need the contact information (name, email, and phone number) for each student.

CERTIFICATION CLASS INFORMATION – PLEASE READ CAREFULLY:

After Certification Class dates are set, email notices with information about the class(es) will be sent to the first 9 people on the request list about a week before the scheduled date. **You must reply to that email to be scheduled for the class or to request a future class.** One reminder email will be sent to those who do not respond to the first email. If there is no reply after the 2nd email, **your name will be removed from the Certification Requests list.** If you are still interested in Certification, you will have to send in your information again to get on the current list.

Facebook Users: The Metalsmithing class has our own page in Facebook groups. You can see info on classes, examples of project classes and other general information. Members of the group can post their finished class projects. Our class page is HGMS Metalsmithing Group. The link: <https://www.facebook.com/groups/438777169648170>

Volunteer Positions *

Class Instructors:

Kathy Bowman
Shelley Curran
Jan Edmunds (Monday AM)

Tools/Equipment Inventory/ Store Manager
Safety
Kit Manager

Bob Goble
Bob Goble
Shelley Curran

Webpage & Social Media Management

Kathy Bowman



Rocket City Jewelers (RCJ) News February 2026

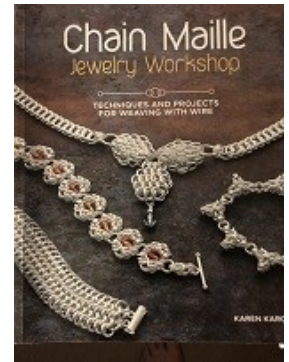
RCJ is open to all HGMS members 16 and older. All skill levels are welcome! No certification is required, but experience using jewelry tools is a plus. We offer one class a month with 4 opportunities to finish the project. **Note:** If you're taking the **Captured Weave Bracelet** class, there's 2 more sessions available: **February 18th, 6-9p** and **February 25th, 2-5p**.

HGMS Library Display

You're encouraged to contribute jewelry to the HGMS display in the main Huntsville library in March! Contributions can be wire-wrapped pendants, wire woven bracelets, LME (Layered Metal Earrings) items, chainmaille, or jewelry you were inspired to create. *The display case is locked at all times and library security is nearby.* Please place your jewelry in a self-seal bag with your name on it, and **bring it to RCJ on February 18th or 25th**. Your jewelry will be returned to you the next time you attend RCJ after March 31st.

Book Recommendation

If you're new to chainmaille, please consider purchasing Chain Maille Jewelry Workshop by Karen Karon. You can order online for in-store pickup at Barnes & Noble, or order online for home delivery at [amazon.com](https://www.amazon.com).



How to Sign Up for Classes

You can sign up one quarter at a time, or for the whole year. Please pay one month in advance so check in goes smoothly, and we can start class on time. To sign up for a class, please email Theresa at rocketcityjewelers@gmail.com at least a **month** before class. Include your **name**, **contact info**, the **class(es) you want**, and the **dates** you plan to take them. Or, you can sign up at RCJ meetings and monthly HGMS meetings.

1st Quarter 2026 Classes

February: Captured Chainmaille Weave (Variation) Bracelet. Copper rings and round beads. Kit \$5.
Feb 18: 6 – 9p, make up. Feb 25: 2 – 5p, make up.



March: Woven Cuff. Copper wire and seed beads. Kit \$5. Note: You can still sign up for this class, but you'll need to provide your own size 8° seed beads (approximately 30).

Mar 4 & 18: 6 – 9p, class and make up. Mar 11 & 25: 2 – 5p, class and make up.



Note: Should severe weather occur on any RCJ meeting day, the meeting will be canceled, and members will be notified.

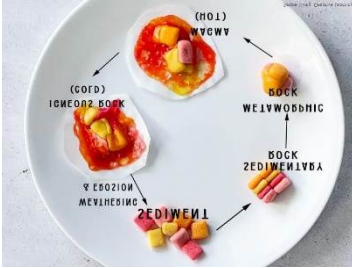
Pebble Pups

February Meeting

Thursday, February 26th - 6:30pm
HGMS Education Center
7901 Bailey Cove Road SE



Huntsville, AL 35803



We started the year going back to beginning. We talked about the rock cycle and the three main types of rocks – igneous, metamorphic, and sedimentary. We used Starburst candies to work our way through the rock cycle and show how all three types of rocks can be transformed between the three rock types. We looked at rocks and identified which type they were based on their characteristics and we sampled treats that were based on each rock type.

This month the Pebble Pups will be talking about crystals. Crystals are made up of different structures that can be observed. We will learn how they are formed, the types of minerals that make crystals, growth conditions, crystal habits, and impurities that influence them. We will talk about the seven primary crystal shapes and compare the crystal shapes of salt and sugar



Join the Pebble Pups for a field trip to Hogg Mine in LaGrange, Georgia on Saturday, February 28th, 2026.



Learn what you can find at Hogg Mine, how it was formed, and how to find it. Come with us and search for quartz, aquamarine, black tourmaline, and beryl!! If you would like to join, please fill out the [Hogg Mine Field Trip](#)

[Interest Form](#) or reach out to Suzanne Miller at hgmspebblepups@gmail.com.

Please note that this field trip is only open to active HGMS members.



Some fun facts about crystals to get you ready for our meeting on the 26th: Ice is a crystal! Snowflakes and ice are water-based crystals. Some crystals (like salt and sugar) can be eaten.

The largest known natural crystals are selenite crystals found in Mexico's Cave of Crystals, which can be up to 39 feet long and weigh 50 tons.

The American Federation of Mineralogical Societies (AFMS) sponsors the Future Rockhounds of America (FRA) program for kids under the age of 18. The HGMS Pebble Pups participate in FRA Badge Program. You can check out all the badges that our Pups can earn by visiting their page at <https://www.juniors.amfed.org/fra-badge-program/the-badges>.



Pups who complete activities outside of club activities can send an email to HGMSpebblePups@gmail.com to receive credit for their activities. If your Pup would like to share what they have learned, seen, or found with the rest of the group, please let Suzanne Miller know and we can give them time at the beginning of the meeting to talk to the group! Sharing will help Pups earn their presentation and communications badges. Is there a topic your Pup would like to learn more about?



Do you have an idea for an activity that our group would enjoy? Have you found a great place to hunt for rocks, fossils, or gems? Email Suzanne Miller at HGMSpebblePups@gmail.com to share your ideas!

HGMS MEETING MINUTES - Jan 27, 2026

RCJ: Schedules are on website. Feb is full. March will be a wire bangle.

Pebble Pups: Feb 26th 6:30pm—Crystals Month.

Field Trip - for the Pups, and other HGMS members -Hogg Mine, LaGrange GA Feb 28 - \$35. details sent separately

Metals: Monday Feb 1st still has openings for Layered Lion Piece

Lapidary: 24" saw repaired & cleaned. 1st Monday night will have rock swap.

No treasurers report

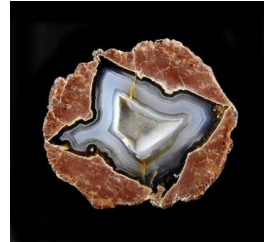
Auction update: Saturday March 28th. Set up Fri 9 am. Doors open Sat 9am, bidding at 10am. There will be a large Buy-It-Now table array.

Speaker Bob Kemper How to take pictures of rocks, jewelry.

Lowell presented planning for a new natural history museum being created for Huntsville. Geology based. Will have dinosaurs, history, rocks etc. Lots of Hands-On

Monthly Rock Swaps - First Monday each Month - February 2

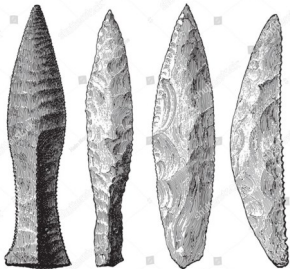
Everyone has fun looking over and trading rocks at the Education Center from 6 to 9 pm. Bring rocks to trade, or just come down to see a lot of interesting rocks. Have yours identified.

**Flint Knapping Continues—Saturday February 7th, 9:00, Ed Center**

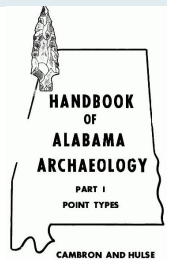
The first knapping sessions have been successful with some experienced and some coming to learn the techniques. A few specialized tools needed for the art are being purchased by the Club. Come on by to practice, socialize, and/or to learn.

Cambron & Hulse is now online for free or purchase at

<https://www.gutenberg.org/ebooks/39974>



"Handbook of Alabama Archaeology: Part I, Point Types" by James W. Cambron and David C. Hulse is a scientific publication written in the late 20th century. This handbook serves as a resource for the classification and identification of projectile point types found in Alabama and nearby regions, addressing a significant gap in archaeological knowledge in this area. The work stems from extensive field research and aims to provide a systematic approach to categorizing stone artifacts based on their characteristics and contextual associations.



Huntsville Gem and Mineral Society

Annual Auction & Sale

Saturday, March 28, 2026

Doors Open at 9 am—Bidding Starts at 10 am

- *Lapidary Equipment*
- *Lapidary Rough*
- *Slabs*
- *Specimens*
- *Cabochons*
- *Fossils*
- *Finished Jewelry*
- *Jewelry Supplies*
- *Decorative Objects*



Plus more on the
Buy It Now
tables!



FREE PARKING—Handicap Accessible
Cash Preferred - Credit Cards Accepted
COME JOIN THE FUN: YOUR TREASURE IS WAITING!

LOCATION

**HUNTSVILLE GEM AND MINERAL SOCIETY
EDUCATION CENTER**

**(located behind the Gym) at the
SANDRA MOON COMMUNITY CENTER
7901 BAILEY COVE ROAD SE
HUNTSVILLE AL 35802**

Mineral of the Month – Star Blue Quartz *By Leslie A. Malakowsky*



Star blue quartz is rare. It has the same physical properties as other quartz. But the blue color and the "star" effect (called *asterism*) are caused by light reflecting off parallel inclusions of amphibole minerals (dark rock-forming hydrous silicates). Fun fact: In 1990, star blue quartz was designated as Alabama's state gemstone thanks to the discovery in 1989 of fine-quality star blue quartz in Alabama by tenacious rockhound "Lucky" McDaniel.



The quality of Alabama star blue quartz rivals or exceeds the star quartz commonly found in other locations such as Arkansas, California, and Georgia in the US, and Sri Lanka, Brazil, and Madagascar. The inclusions in more common star quartz are so light they can only be seen by transmitted light or weakly seen by reflected light. But Alabama star blue quartz has two unique features that set it apart from common star quartz. Star blue quartz exhibits strong chatoyancy with an intense central six-ray star. Star blue quartz also exhibits *secondary* stars that, when viewed with a strong light source, travel down each ray of the central star as the stone is rotated. This mineral may have been the first occurrence of fine quality *multi-star* quartz outside Sri Lanka!

Images of star blue quartz gemstones are extremely rare. This image is from Dr. Rohrbach's article (see References). Alabama's unique geological history, shaped by continental collision, especially in the Appalachian Piedmont region, transformed sediments into crystalline metamorphic and igneous rocks with amphibole minerals making ideal conditions for star blue quartz. Lucky's find, the type locality, was in Chambers County, Alabama, about 50 miles northwest of Columbus, Georgia. The quartz was found along the surface to several feet below the surface in a narrow vein with clay and earth along the edges. Small gemmy pieces to pieces weighing several pounds were found. The color ranged from translucent, light blue-gray, to semi-transparent/transparent with a blue cast. All the material showed a strong central six-ray star, and much of the material showed multiple stars. Specimens were cut and sent to the Gemological Institute of America (GIA), the National Museum of Natural History (Smithsonian Museum), and the Geological Museum in England.

Alabama star blue quartz is highly sought by rockhounds and collectors. But finding it is challenging. Many believe it doesn't exist despite being the state gemstone. Sources suggest that it may be found in the east central Piedmont Upland particularly in Chambers County. In the rough, star blue quartz can appear milky blue or bluish gray. So other minerals such as blue calcite, celestite, or dumortierite quartz (a variety of quartz that contains dumortierite inclusions) are sometimes mistaken for it. Cabbing and faceting star blue quartz present their own challenges. For example, the central star may only become visible when the stone is cut in the correct orientation. But let's find it first!

References: "The Stars Fell in Alabama" by R.P. Rohrbach, Ph.D., [Lapidary Journal](#), March 1989; Alabama Department of Archives and History (<https://archives.alabama.gov>); and wonderdig.com.



FIELD TRIPS - For any interested HGMS member

These trips are far from Alabama, but they are worthwhile. Joe & Carrie Staton have been and wish we could go again. These are usually surface collecting.

Joe Staton

From: Teri <agatehunter@102702558.mailchimpapp.com>

To: Joe Staton cue360@aol.com

Subject: Schedule of Spring 2026 Rockhunts. Rockhunts run from the beginning of March to the end of April. You can hunt 4 different ranches!

Hello, fellow rockhounds! Below is the schedule for my Spring 2026 rockhunts. This is a firm schedule for me, given that there are no political or environmental problems that make it impossible to get out to the ranches. I will be in Alpine, TX, leading these field trips in March and April just as I've done for almost the last 30 years. If one person (you) signs up for the trip, it will happen. And there is no maximum number of people allowed on my trips, so bring your family, friends, and gem club members with you.

At this point, I am the only person leading rock hunts in the Texas Big Bend Region, and there are no ranches available for hunting without a guide. If you've dreamed of rockhunting in the Big Bend and haven't yet done it, I would encourage you to come out this spring. You never know what will happen in the future, and since I don't own the land where we rockhunt, I can't guarantee that we will be able to get on the ranches forever.

To sign up for a hunt, please text or email me your name, the date and location of the hunt, the number of adults and kids under 12 or so that will be hunting, and provide me with a phone number that will work while you're out in the Big Bend. My cell number is (432) 386-3431, and my email address is agatehunter@sbcglobal.net. Please email your requests to agatehunter@sbcglobal.net, rather than replying to this email, because my email service insists on having my reply emails sent to it instead of my email.

I'll send you a confirmation text or email at the time you book the hunt. I will try to send you a reminder about a week before your hunt, but even if I don't, the rockhunt will happen unless you hear from me cancelling it. In the past 30 or so years, I've only cancelled six or seven rockhunts, mostly due to extreme weather conditions.

Rollin' Rock Club membership required for all hunts. Cost is \$10 per year for a single membership, or \$16 for a dual membership.

We meet in the morning at the following places:

Alpine: in the parking lot of Little Caesar's Pizza, on the southeast corner of the intersection of Holland Avenue and Highway 118 South.

Balmorhea: in the vacant lot across FM 2903 from the Alon Gas Station and Uncle's Convenience store on Highway 17 in the town of Balmorhea.

Study Butte: In the dirt lot south of the Alon Gas Station and restaurant/store at the junction of Highway 118 and Highway 170 in Study Butte.

See you on a rockhunt! Regards, Teri

Brad's Bench Tips

"Bench Tips for Jewelry Making" and "Broom Casting for Creative Jewelry" are available on Amazon www.BradSmithJewelry.com For those who enjoy these bench tips, I'm happy to announce a second volume is now available on Amazon. "More Bench Tips" includes 86



additional ways to save time, avoid frustration or improve quality at the bench. These new tips cover problems in fabrication, stone setting, casting, soldering and polishing.



Bench Shears

When cutting sheet metal, it's quicker and easier to use a set of shop shears as compared with using a hand saw. The cut is not as precise, but many times you don't need that. Shears will easily cut up to 24 gauge sheet, and some will cut 22 or even 20 gauge.



Current prices for shears run from \$13 - \$36 in jewelry catalogs, and the Joyce Chen scissors recommended on some jewelry blogs run more than \$20. But I found cheaper alternatives at the 99 Cent Store for use in my classes. They're great for cutting bezels, trimming around a bezel cup and cutting a piece off a larger sheet.

BEZEL CLOSER

A bezel closer is a steel punch that makes quick work out of pushing the metal down over a round stone and burnishing it. It works with regular bezels, with tube settings, and with prong settings. Stones can be set in as little as 30 seconds.

The working end is a concave cavity that fits over the bezel or prong setting and is pushed and twisted to capture the stone. Sets can be purchased but are expensive and contain many sizes you will probably never use. If all you need is one or two sizes, here's how you can make them yourself.

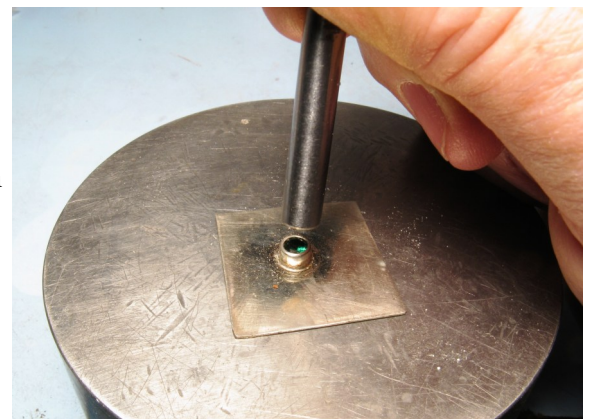
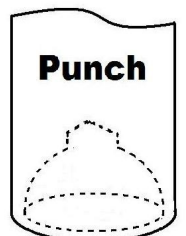


Find a round steel rod or bolt a little larger in diameter than your bezel cup or prong setting. Cut a 5 inch length. File both ends flat. Locate the center of one end, centerpunch a divot, and drill a small pilot hole about 5 mm deep. Remember to use a little oil as lubricant when cutting steel.

Select a ball bur a bit larger than the bezel. Enlarge the pilot hole to a full hemispherical cavity. Test for proper fit with your bezel. Bezel should first contact the cavity about a third of the way in. When the size is correct, polish the cavity using Zam on a length of chopstick in your flexshaft. If the tool is not polished, it will leave scratches on your bezel or prongs.

When using the tool, the first step is to capture the stone correctly. I usually work by hand and push the punch straight down over the bezel or prongs. This causes the metal to start bending over the stone. The next step is to inspect the stone with a lens to be sure it is staying level. Repeat until the stone is seated on its bearing and can't move anymore.

Finally, force the metal down onto the stone uniformly all the way around. While this can be done by hand, I often gently tap the punch with a hammer. Finish by twisting the bezel back and forth to burnish the top of the bezel.



HGMS Metalsmith's Art Installation a Local Park - Dr. Deborah Barnhart

One of our own HGMS Metalsmiths is featured in what is undoubtedly the largest metalwork from one of our members in 2025. The installation was funded by Councilman Bill Kling's desire to place art in small parks in his district, and is managed by Arts Huntsville for the City of Huntsville. Dr. Deborah Barnhart, member of Jan Edmund's Metalsmithing Classes, submitted her design when she learned that West Lawn Park was the selected site for the installation. Dr. Barnhart played in this park as a child and was inspired to create the exhibition by her lifelong experiences growing up in the Rocket City. By far the largest element of the installation is a 24' x 10' tall



aluminum sculpture inspired by Da Vinci's Vitruvian Man. A double-sided astronaut holds the engraved message of "E pluribus unum" and "Don't Give Up the Ship", alongside frames which allow visitors to join the sentiment that we all are part of this Earth journey and differ very little from one another. The medals were salvaged from the US Space and Rocket Center scrap, using hand tools and plasma cutting to form the images prior to TIG welding the artwork.

The centerpiece of the 4-element installation features a 6' granite compass rose with a poster depicting the Saturn V Moon Rocket and the words "We came in peace for all mankind".



Accompanying the compass rose is a 1-meter granite sphere engraved with Earth's continents, a star marking Huntsville location, and the words of Marshall McLuhan "There are no passengers on Spaceship Earth we are all crew". The third element is an analemmatic sundial on which the shadow of the visitor indicates the time of day. This is on a crescent embedded with phosphorescent stones which make it glow like the moon at night. A QR code on the compass and a notebook in the Little Free Library lead guests to an educational package about the installation's content.



The park is located between North and South Rose Drives, off 9th Ave in Huntsville's West Lawn neighborhood. Mr. Kling liked the work so well he has asked Dr. Barnhart to add one more piece to the exhibition! Look for it in late 2026.

2026 HUNTSVILLE GEM & MINERAL SOCIETY 2026 EXECUTIVE BOARD

President - Jan Edmunds -
Vice President - Doug Blakeslee -
Secretary: Debbie Epperson -
Treasurer: Theresa Chivers -
Membership - Theresa Chivers -
Editor: Bill Friday - 256-527-8227 -
Past President - Shelley Curran -
Directors:
 James Yack -
 Ashlee Pool -
 James Mallonee -
 Anthony Zwilling -
 Les Bartel -

2026 COMMITTEE CHAIRS

Property: Bill Friday

Program Chair—Bill Friday

Webpage: Leslie Malakowsky,

Auction Chair: Ashlee Pool

Field Trips: Anthony Zwilling

Pebble Pups: - Suzanne Miller

Show Chair: Shelley Curran

Assistant Show Chair: Jan Edmunds

Show Publicity Chair: Ashlee Pool

Show Treasurer: Theresa Chivers

Mineral ID: Lowell Zoller

Facility Maintenance: Bill Friday

The Huntsville Gem & Mineral Education, 7901 Bailey Cove Rd. SE, Huntsville AL 35802
Metal Smithing/Silver Instructors: Shelley Curran, Kathy Bowman, Jan Edmunds
Lapidary: Bill Friday, James Yack, Anthony Zwilling, Les Bartel, Theresa Chivers,
Rocket City Jewelers: Judy Osmundson, Theresa Chivers, Leslie Malakowsky
Pebble Pups: Suzanne Miller, Matthew Sager, Theresa Chivers, Dee Dee Morton, Bill Friday

Monday **Metal Smithing/Silver** 5:00pm - 9:00pm
1st Monday Rock Swap 6:00pm - 9:00pm

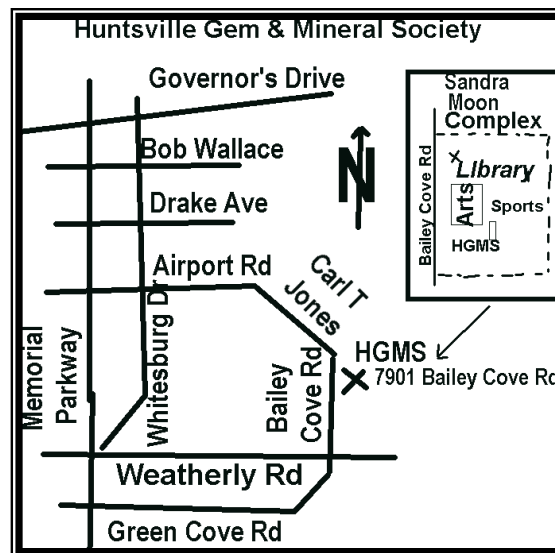
Tuesday **Lapidary** 9:00am - 2:00pm
Lapidary 6:00pm - 9:00pm
HGMS Meetings 6:00pm - 8:30 4th Tuesdays

Wednesday **Lapidary** 6:00pm - 9:00pm
Rocket City Jewelers
 1st & 3rd Weeks - 6:00pm - 9:00pm
 2nd, 4th, 5th Weeks - 2:00pm - 5:00pm

Thursday **Metal Smithing/Silver** 5:00pm - 9:00pm
Pebble Pups 6:30pm 4th Thursdays
Lapidary 6:00pm - 9:00pm

Friday **Lapidary** **Discontinued**

Saturday **Metal Smithing** 9:00am - 3:00pm irregular 1st Saturday of the Month
Lapidary 9:00 - Noon - First Saturday of the month
Flint Knapping 9:00 - Noon - First Saturday of the month



PURPOSE OF THE SOCIETY: The Huntsville Gem & Mineral Society is a non-profit educational organization for people interested in mineralogy, geology, paleontology, and related lapidary arts. Its primary purpose is the education and enjoyment of the members and the general public in these areas. This purpose is accomplished through programs and activities, shows, lectures to school children and organizations, and exchange of rocks, minerals, artifacts, and newsletters.

DUES: Annual dues are \$20.00 per person, \$25.00 per family, and are due on October 1st of each year

Membership Applications may be found at our webpage www.Huntsvillegms.org or at the HGMS Education Center during a meeting or at one of our activity periods: 7901 Bailey Cove Rd SE, Huntsville, AL 35802

Meetings: 4th Tuesday of the month except for March Auction, June picnic, Christmas Dinner and major holidays.

The Society is affiliated with the American Federation of Mineralogical Societies , the Southeast Federation of Mineralogical Societies, and the Dixie Mineral Council

Federation Newsletters: DMC: <http://www.amfed.org/sfms/dmc/dmc.htm>

SFMS: <https://www.southeastfed.org/newsletter>

AFMS: www.amfed.org/news/default.htm

2026 CALENDAR

- 24 Feb '26 - Regular HGMS Meeting, Huntsville Gem & Mineral Education Center
7901 Bailey Cove Rd SE, Huntsville, AL 6:00pm
- 28 Mar '26 - **SATURDAY** Rock Auction, Education Center 8:00am
7901 Bailey Cove Rd SE, Huntsville, AL 6:00pm
- 28Apr '26 - Regular HGMS Meeting, Huntsville Gem & Mineral Education Center
7901 Bailey Cove Rd SE, Huntsville, AL 6:00pm
- 26 May '26 - Regular HGMS Meeting, Huntsville Gem & Mineral Education Center
7901 Bailey Cove Rd SE, Huntsville, AL 6:00pm
- Jun '26 [**Saturday - date to be determined**] - Annual HGMS Picnic, Monte Sano State Park
- 28 Jul '26 - Regular HGMS Meeting, Huntsville Gem & Mineral Education Center
7901 Bailey Cove Rd SE, Huntsville, AL 6:00pm
- 25 Aug '26 - Regular HGMS Meeting, Huntsville Gem & Mineral Education Center
7901 Bailey Cove Rd SE, Huntsville, AL 6:00pm
- 22 Sep '26 - Regular HGMS Meeting, HGMS Education Center
7901 Bailey Cove Rd SE, Huntsville, AL 6:00pm
- 9-11 Oct '26 - HGMS Fall Gem, Jewelry, & Mineral Show - Jaycee Building
2180Airport Rd SW, Huntsville, AL 35801
- 27 Oct '26 - Regular HGMS Meeting, Huntsville Gem & Mineral Ed Ctr
- 24 Nov '26 - Regular HGMS Meeting, Huntsville Gem & Mineral Education Center
7901 Bailey Cove Rd SE, Huntsville, AL 6:00pm
- 9Dec '26 - Christmas Dinner - details as it gets closer
- We will have a great potluck dinner again at the Ed Ctr.
7901 Bailey Cove Rd SE, Huntsville, AL 6:00pm
- 26 Jan '26 - Regular HGMS Meeting, Huntsville Gem & Mineral Education Center
7901 Bailey Cove Rd SE, Huntsville, AL 6:00pm

Deadline for Next
Newsletter March 15

**Dated material
Do not delay**

February 2026

Rocket City Rocks & Gems
Bill Friday, Editor
2508 Excalibur Dr.
Huntsville, AL 35803