

ROCKET CITY ROCKS & GEMS



The Monthly News Bulletin of the Huntsville Gem & Mineral Society, Huntsville, Alabama

Volume 54 No. 6

"We'll go to the Moon for a Rock"

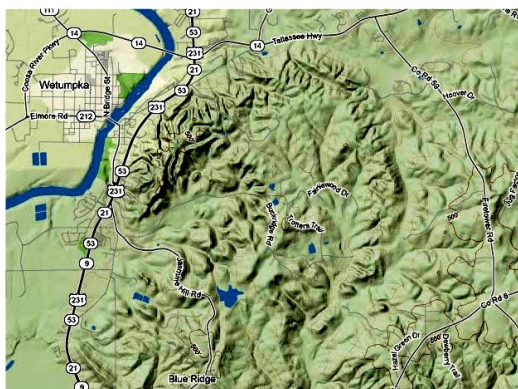
June 2022

INSIDE THIS ISSUE

| | |
|--------------------------------------|-----|
| Picnic this Saturday | 2 |
| Minutes May Meeting | 2 |
| Rocket City Jewelers | 3 |
| Metalsmithing Corner | 4 |
| Picnic | 3 |
| Future Rockhounds of America..... | 5 |
| Brad's Bench Tips | 6 |
| Fossils of the Month..... | 6,8 |
| DMC July Field Trip | 9 |
| Jun/Jul Birthdays/Anniversaries..... | 10 |
| Activity Schedule..... | 10 |
| Executive Board & Committees..... | 11 |
| Calendar..... | 12 |

HGMS Meeting 28 Jun 2022, 6:00

James Lowery will tell us about the Wetumpka Meteor Crater, dated to 85 million years ago, where a 1000 foot diameter asteroid gouged a hole 4.7 miles in diameter when it landed in a shallow ocean. It was first recognized in 1970's when someone recognized the telltale scar on a topographic map.



Picnic this coming weekend—9:00 –3:00. Bring a side dish and your own drinks (no alcohol). Monte Sano State Park, Bikers Trail Pavilion.

Barbecue pork and chicken will be provided.

Web Page - www.huntsvillegms.org/



Huntsville Gem & Mineral Society (HGMS) 2022. Reprinting Rights are granted for all material (except for minutes of the meeting and copyrighted articles) to any organization officially affiliated with the American Federation of Mineralogical Societies (AFMS) or Southeastern Federation of Mineralogical Societies (SFMS), provided credit is given to the author, the original publication, and this newsletter. The HGMS email address is hsvgems@gmail.com.



From the Editor



gg107320475 www.gograph.com

Picnic this coming Saturday June 25th

The park will be open at 8:00 You may come as early as you wish, hobnob with friends, bring your own rocks to sell and table/chair, buy rocks, eat delicious food, and hike the trails if you wish. Food will be served around 11:45. Barbecue pork and chicken will be provided by the Club. Plan to bring a side dish and your own drinks.

HGMS General Membership Meeting Minutes - May 24th

New members Leslie Amato from the Montgomery club.

Sign up sheet for the picnic and June 11th Early works mine craft show

Accepted minutes from last meeting.

Field trips, Anthony & Berette Zwilling. and James Yack trip to Paint Rock Valley.

We have \$11,913 in the club checking account.

Membership is increasing every week.

RCJ was not represented to give a report.

Metalsmithing project will be inlaid bracelets. Bangles, copper bronze and silver will be put through the rolling mills. Thurs June 2nd and Monday June 6th. Jan Edmunds is going to start teaching metals during the day Monday 9am-12 starting July 11th. Sign up must be by email. Must sign up by July 1st. This is not an open studio, she is only taking 6 students per class, and it will be every Monday. edmundsjan@gmail.com.

Lapidary lab report: Still needing Saturday and Sunday lab hours locked in. It takes about 50 minutes to clean the four 14: rock saws. Catherine Trenkle will do the 24 inch saw each month. Keypad for basic access had been out for 2 weeks. The professionals came out and fixed it today. Lab usage fee of a dollar-a-day is working just fine for now.

Geoscience is out of business for lack of programs.

Future Rockhounds is meeting once a month. Last month was about minerals around the house. May 28 is Russell Cave field trip. Early Works is going to be on June 11th from 10:00-3:00. Volunteers are needed. Samples are needed of Alabama rocks. Burritt on the Mountain has two weeks of workshops that we plan to support for early and late Elementary kids. Bill Friday will send out information.

Lowell Zoller has a rock display at Burritt and will have a fossil display next week.

Picnic is June 25th. Meat, paper, and utensils will be provided by the Club. Please sign up for sides. It opens at 9:00, meal at 11:30, but you can go into the park early if you wish.

Bottled water and some tea will be provided or you may bring your own drinks. No alcohol.

North Carolina is having a trip to Fox farm, searching for corundum, rubies, quartz. Info is in the newsletter.

Next club meeting is June the 28th.

Annual Fall show is October 14-16th. Bruce is in charge of Show display cases and will put out more information as the time comes closer.

Speaker is Haley Middleton. She will be speaking about gold and recognizing the alloys – 14, 16, 18, and 24 carat. The rain was so loud most of the time it was very difficult to hear her presentation. <https://goldprice.org/live-gold-price.html> for checking current gold pricing. KitCo.com for the history of gold. GIA or the Gemological Institute of America's website will give you most any information you may want to know about gemstones.

Meeting closed at 8:30.



Rocket City Jewelers (RCJ) News By Judy Osmundson

This past month has been a lot of fun! We made Red/White/Blue Earrings in the Barrel weave, shaped some copper and bronze wire into a Turtle Pendant around a Dragon Vein cab and we learned a new weave – Not Tao 4 – for our Eternal Double-Drilled chain maille bracelet. New weaves and new wire ideas!! Looking forward to Christmas and the Holidays in July.

Upcoming Schedule:

July 6: 6p-9p, CHRISTMAS TREE PENDANT. Kit cost \$5.

Make a wire tree pendant from silver tone craft wire round nosed pliers, cutters and flat or chain nosed pliers. We still have openings available.



July 20: 6p-9p, CANDY BRACELET. Kit cost \$11. This chain maille project has a simple chain with woven moibus and glass donut beads. An easy weave and cute for the holidays. You need to bring 2 pair of flat nosed pliers (**DIPPED IN TOOL MAGIC or WRAPPED IN TAPE**). We have openings in this class!

Meeting times: Classes are from **6p-9p on 1st and 3rd Wednesdays**. Make up and “Finish It” sessions are from **2p-5p on 2nd and 4th Wednesdays**. (Meeting times and activities on 5th Wednesdays are TBD).

Class Reservations: You must sign up during class or contact Theresa **two weeks before class** to reserve your kit. If you have signed up for a class, your kit will be held until you return. If you need to cancel, please notify us so your kit can be sold to someone else. Please Call, Text or Email Theresa Chivers at 256-509-0406 (wolfsong929@gmail.com).

Meeting Location: The **HGMS Education Center, 7901 Bailey Cove Road SE, Huntsville.** Enter the South parking lot off Bailey Cove Road SE, drive through the lot to the Education Center (long narrow building at the back), turn left, park directly opposite the building and enter the double glass doors on the West side of the building. Note: The doors will be unlocked for the first hour. After that, the doors will be locked, and you will need to call Judy (205-541-7207) or Theresa (256-509-0406) to let you in.

Volunteers:

Instructors Judy Osmundson, Theresa Chivers, Leslie Malakowsky

Point of Contact/Kit Res./Security Theresa Chivers

Kit Manager/Treasure security Judy Osmundson

Membership/Publicity/Inventory Leslie Malakowsky

RCJ is open to **every member** of HGMS. (Gentlemen, too!) If you love making jewelry (especially with gemstones), please join us! All skill levels are welcome! Please contact Judy with your class ideas or “pin” your ideas on our Pinterest page. We’d also like to know what you are able to teach!



Metal Smithing - Shelley Curran & Kathy Bowman

The July class will be a multiwire cuff bracelet with a stone in your choice of copper, bronze, or brass (note: bronze and brass are a little harder to work with than copper). The stone will not be included in the kit so please bring a stone you would like to use. It should be about 20-25 mm wide at the widest point and should be no taller than 28 mm. The height of the stone determines the width of the bracelet. The stone can be any shape as long as it fits the dimensions given. We hope to have some stones available for sale that are the correct size.



The class dates are **Thursday, July 7th** or **Monday, July 10th**. Class starts at 5:00pm. Kit cost will be \$6.00. The signup sheet for this class will be available at the Picnic on June 25th or during the Monday and Thursday classes. You also may sign up by sending email to HGMS@wildivystudio.com.

Certification Classes: We had planned to have another certification class in June however the new air conditioning unit installation still not completed as of this writing so that class be postponed until it is online. It is just too hot to work in the Metalsmithing room when temperatures are in the mid-90s. The people who have previously requested the certification class will be notified as soon as we can schedule a date.

To request Certification please send your name and contact information (name, email address, and phone number) to HGMS@wildivystudio.com We will contact those who sign up by email with more detailed information about the class(s) soon.

Facebook Users: The Metalsmithing class has our own page in Facebook groups. You can see info on classes, examples of project classes and other general information. Members of the group can post their finished class projects. Our class page is HGMS Metalsmithing Group.

The link is: <https://www.facebook.com/groups/438777169648170>

Volunteer Positions *

Class Instructors:

Kathy Bowman
Shelley Curran
Jan Edmunds

Tools/Equipment Inventory

Annie Diekmann

Store Manager

Opening

Kit Manager

Shelley Curran

Webpage & Social Media Management

Kathy Bowman

*Note: We are all volunteers so the schedule is subject to change.



Future Rockhounds of America Thursday June 23rd, 6:00pm

Hello Future Rockhounds!

The upcoming program will cover fossils, particularly the types we found at the Browning Fossil Site at Booneville MS on Sat Jun 17. This month we had six FRA families who made the trip. Our group found shark teeth and other fossils at the W. M. Browning Cretaceous Fossil Park in Mississippi and got wet! A great time on a hot day. We will further explore fossils, dinosaurs, learn about our very own state fossil, and explore the processes of Earth's geology in the next two meetings.



Fossils



Field Trips



The water was fine



Jacie's treasures Paisley's shark teeth

Robert Langford explains to Paisley and Daniel (left) what they found in the creek



Here are the field trip reports from some of our Future Rockhounds about their trip to the shark tooth site.

We went to "W.M. Browning cretaceous fossil park to look for fossilized shark teeth and other stuff. We went down to the river with a shovel and a sifter to sift through the sand and pebbles. We found a lot of ghost shark teeth and goblin shark teeth. And we did not just find shark teeth, we also found shells and petrified wood pieces. It was really fun! -Paisley

We went to W.M. Browning Cretaceous Fossil Park. We had lots of fun collecting fossilized shark teeth. We also collected lots of shells and some petrified wood. We found crow shark teeth, goblin shark teeth, and bone fish teeth. Jacie

In July we will visit Faye and Jim Lacefield's Cane Creek Nature Preserve near Tusculumbia AL and collect agates while exploring Alabama's unique geology. Details forthcoming. Our program for the meeting will explore the the processes of Earth's geology

We can't wait to see you at our next meeting! Bring your Friends.

Your Rock Hound Leadership Team

Karen Allen— karenhsv@gmail.com

Mike Harrison - campcraft.mike@gmail.com

Dee Dee Morton - deemorton@hotmail.com

Brad's Bench Tips

"Bench Tips for Jewelry Making" and "Broom Casting for Creative Jewelry" are available on Amazon www.BradSmithJewelry.com. For those who enjoy these bench tips, I'm happy to announce a second volume is now available on Amazon. "More Bench Tips" includes 86 additional ways to save time, avoid frustration or improve quality at the bench. These new tips cover problems in fabrication, stone setting, casting, soldering and polishing.



DEBURRING A HOLE

When you drill a hole, there's always a burr produced on the underside of the metal. We all have our ways of removing them - typically by filing or sanding the area smooth. But doing it this way will put scratches on your piece that will have to be polished off.

A quick way to remove the burr is to grab a drill that's two or three times larger than your hole. Simply twist it in the hole to cut off the burr. I usually do this twisting by hand, but if you have many holes to do, it's easier on your fingers to put the drill into a holder like a pin vice.

CLEANING STEEL SHOT

Steel shot in a vibratory or rotary tumbler works great to burnish and shine your finished silver pieces. But a common problem is how keep the shot clean. Carbon steel shot can get rusty if exposed to the air, and even stainless steel shot can sometimes develop a blackish coating that's hard to remove.

My solution of choice to clean the shot is Classic Coke. Just pour an ounce or two over the shot and let the tumbler run for an hour or so. A bad case might require a second cleaning. Some folks like to let the bubbles in the Coke dissipate before using it so that gas pressure doesn't build up in the tumbler barrel. I've heard that it's the phosphoric acid in Coke that does the trick.

While you're waiting for the shot to clean up, just settle back and enjoy the rest of the Coke.

FOSSIKING ON FOSSILS By Cecilia Duluk (This is a reprint from the Stillwater OK Rockhound Gazette Feb 1921 issue)

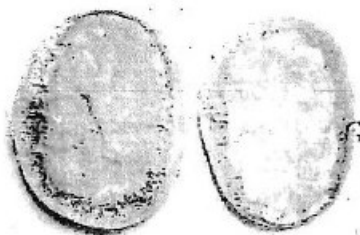


Fig. 1

During the last hundred years of fossil collecting, the shale deposits of Will and Grundy Counties in Illinois have become world-famous for producing imprints of strange creatures, some otherwise unknown from anywhere else. These Pennsylvanian Period (or "Coal Age") deposits (known in Europe as the Upper Carboniferous), produce concretions which, when split, often have imprints of fossil life in them. Originally collected as "pebble-like concretions in the banks of Mazon Creek" [a, pp.6-

7] by serious amateurs like George Langford, and joined in the 1940's by interested professionals such as Dr. Eugene S. Richardson, Jr. of the Chicago Field Museum, most of the fossil nodules were of coal-age plants, with a smattering of animal forms indicative of brackish-water swamp.

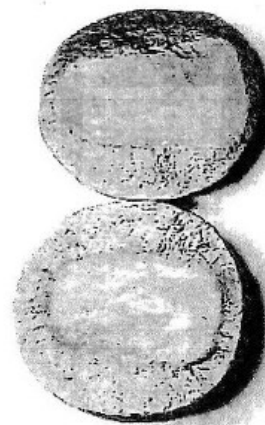


Fig. 2

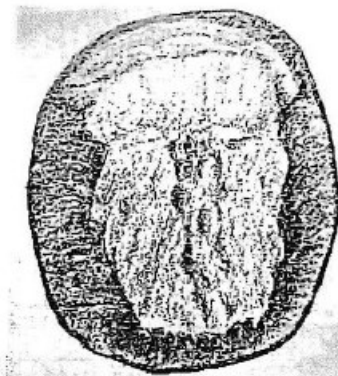


Fig. 3

Variously known as the "Braidwood material," the "Wilmington Coal Flora and Fauna, [a] and the "Mazon Creek fossils," the thousands of specimens were generally relegated to being from another of the seemingly unlimited world-wide occurrences of Upper Carboniferous plants associated with coal deposits. From the 1940's on a majority of the specimens stratigraphically designated as being from the Francis Creek Shale Member of the Carbondale Formation were coming from the shale/claystone layers dumped on spoil heaps by the strip mining of coal.

Then the Peabody Coal Company opened Pit 11, an extensive mining area about two miles south of Braidwood, near a "dot on the map" called West Essex, Illinois. There, the preponderance of fossils in the concretions were animals — not just clams, spiders, and ancestors of the horseshoe crab, but somewhat

three-dimensional imprints of delicate invertebrates like shrimp, spiders, and winged insects — AND, of course, the now-famous animal known as *Tullimonstrum*. The general consensus came to be that there were "three distinct zones [in the Mazon Creek biota, with the Essex material representing] a near-shore, salt-water ocean area and its inhabitants. [c., p.2]

During those years when the spoil heaps of Pit 11 were generally open to collectors, many, many specimens came to the attention of Dr. Gene and his cohorts at the Field that did not even vaguely resemble anything hitherto known as a fossil form. Dr. Gene first called them all his "little beasties," and collectors gave them nicknames such as "winged seeds" (eventually designated *Cyclus*, and considered an arthropod), "ghosts" and/or "blades" (still being studied as possible larval forms of chordates [d], "wytes" (so called because they look the letter "Y") — and, of course, "blobs."

Originally dismissed as "growths formed by minerals such a pyrite or sphalerite" [e., p.204], or as parts of the decayed remains of other organisms, the preponderance of "blobs" with form and color similar to many other "beasties" found in the Essex fauna made both professionals and amateurs conclude that these were indeed fossils of some kind of invertebrate animal. True, there were some differences in specific characteristics from "blob" to "blob," but the general oval or elliptical outline showing a distinct upper and lower "body" character, the convex versus concave thickness in the positive versus negative imprints in the two halves of the concretion, and the consistently lighter color of the "blob" than the surrounding matrix, all pointed to the organic origin of these strange forms.

Collectors in the '60's not willing to wait for official scientific descriptions of the "blobs," often did their own analysis. Mazon field tripper *par excellence*, Terry Wolff, designated the differences as being "Blobs with character" (fig. 1) and "ordinary Blobs" which had more vague or general characteristics (fig 2). Those with detailed "character" often show two distinct lobes; the larger lobe has furrows or "bulges" that resemble "wrinkles," as if the internal organs of the sac-like creature are deteriorating under the "skin." This alone would lead one to believe the fossils represent some kind of soft-bodied invertebrate animals.

So, WHAT KIND of animal were (or are) the "blobs?" Several professional authors, including Richardson, G.S. Nadasdy, and, most significantly, Merrill Foster [see e. generally], conclude the "blobs" are almost all "soft-bodied coelenterates" belonging to the general group which includes modern MEDUSA. In fact, Donald Auler's masterful sketch of the holotype "Blob" clearly shows all the "with character" details (fig. 3, from c., p.20 of 1999 ed.) that Terry Wolff considered important! In his official description, Foster points out, paraphrasing Nadasdy, "The common shapes taken by "blobs" ...are comparable to oral, aboral, and lateral impressions of modern medusa... [with] some blobs showing impressions that resemble tentacles or mouth lobes or both... [as well as] reticulate gastro-vascular networks seen in some Recent medusa." [e. p.205] Foster made it a new genus and species



Fig. 4

of soft-bodied coelenterate, *Essexella asherae*, naming it after Helen Asher, who donated the holotype (the official specimen upon which the name and complete description are based), [fig. 4, from e., p.238] Foster also discusses the "bell-shaped" skirt which covers most of the tentacles, but whose "projections," indicating "possible oral lobes," can be seen on some specimens, including the holotype [fig.5 projections labeled "ol," from e., p.238]

In other words, "Blobs" are JELLYFISH!

Ah, but now comes the interesting twist — the proper name for a majority of "Blobs" (a few types put into a genus called *Reticulomedusa*) is still *Essexella asherae*; they can still be called by the popular name **JELLYFISH**; they can most likely be put into the class **SCYPHOZOA** (sometimes called SCYPHOMEDUSAE).



Fig. 5 - Holotype illustration showing projections

However, based on recommendations from the International Biological Nomenclature Committee, which for the last twenty years or so has attempted a coordinated nomenclature system for both fossil and living organisms (hopefully finally eliminating some high school biology books' classification of brachiopods as mollusks, for example) — the preferred phylum to use for "blobs" is **CNIDARIA**, with the common name being **cnidarian**. Even Raymond Ore, Editor-in-chief of the *Treatise On Invertebrate Paleontology*, admitted in the 1956 *Coelenterata* volume that **CNIDARIA** is preferable "after the removal of sponges and ctenophores..." [f., p.10] Yes, classes **HYDROZOA** ("coelenterates" is which the polyp stage dominates and which usually have a chitinous skeleton sheath), and the well-understood **ANTHOZOA** (corals and their kin) have stayed the same, but are now also within the **PHYLUM CNIDARIA**.

"Blobs," then, are of the **PHYLUM CNIDARIA**, **CLASS SCYPHOZOA**, based on the fossil and living evidence that a major part of their life cycle is spent as **medusa**, with some sort of "bell" or "dome" (think of modern jellyfish) and some sort of tentacles. By the way, fossil Scyphozoans go way, way back to the Proterozoic Ediacaran State deposits of South Australia (700 millions years age, +/- a few million). [see g., pp. 240-241] And, some of the most spectacular ones have been found in Germany in the Solnhofen Limestone of Jurassic Age. A few have even been found lately in deposits in some other states. But, none are as varied and prolific in number as the "Blobs" of Illinois' Mazon Creek!

Oops, I did start out mentioning the "Wyes" along with the Blobs, didn't I? Well, these are those strange, Y-shaped critters in the Mazon Creek, that have been given an even stranger official name, *Escumasia roryi*, which is the name of — but that's another story!

Footnotes/References

Figs. 1 and 2 photos of specimens from the Cecilia Duluk collection of Mazon Creek fossils.

- a. George Langford, *The Wilmington Coal Flora*. 2nd Ed. Downers Grove: Escon Associates, 1958
- b. George Langford, *The Wilmington Coal Fauna and Additions to the Wilmington Coal Flora*. 2nd Ed. Downers Grove: Escon Associates, 1963
- c. ESCONI, *Keys to Identify Pennsylvanian Fossil Animals of the Mazon Creek Area*. Downers Grove, Illinois: ESCONI 1989
- d. Cecilia Duluk, "Hunting Ghosts, Blobs, and Assorted Monsters in Illinois' Coal Age Nodules," *Earth Science*, July-August, 1968, pp. 156-160.
- e. Merrill W. Foster, "Soft-Bodied Coelenterates in the Pennsylvanian of Illinois," *Mazon Creek Fossils*, Matthew H. Nitecki, Editor. N.Y.: Academic Press, Inc. 1979, pp. 191-267
- f. Raymond C. Moore, Dir. & Ed. *Treatise on Invertebrate Paleontology, Part F Coelenterata*. Lawrence, KS: University of Kansas Press, 1956 (reprinted 1963)
- g. Arthur B. Busey III, et al. *A Guide To Rocks & Fossils*. San Francisco: Fog City Press, 2nd Ed. 2002. pp. 240-241.



Dixie Mineral Council Field Trips

The Southeast Federation of Mineralogical Societies, Inc



The Friendly Federation - Founded in 1976 to serve
DMC Program of the SFMS Field Trip Committee
Copyright © All rights reserved.

An Official Field Trip of the Henderson County NC Gem and Mineral Society (HOST)
An Official Field Trip of Huntsville Gem & Mineral Society

Friday, July 15, 2022 Thermal City Gold Mine 5240 US 221 North Highway, Union Mills, NC 28167
Open 8:30 a.m. to 5 p.m. Limit 35 People **Registration Required** Fee: \$10 per person site fee

TRIP: A unique experience, family-friendly and hosted by people who are real prospectors! Anyone who wants to pan or prospect for gold is welcome. Here you can learn about and enjoy the tradition and history of gold mining in North Carolina. Lots of other NC gems and minerals to find, see or buy. Camping available and a shop to buy gold pan/screen equipment.

COLLECTING: The material from the site or river bed will be easy to work with, and we're hoping for a nice, hot day to enjoy the water. Comfortable, covered flume areas for sluicing the native soil. Other possible finds common to this area of NC include: moonstone, emerald, citrine, aventurine, smoky quartz, tourmaline, ruby, etc. You will have assistance if needed to identify your finds.

BRING: Screens and pans are available with your \$10 day fee, but for river prospecting please bring your own equipment. A sluice of your own can be set up in the river. If you're more experienced or want a LOT of material, the site has 4 high bankers they will load, or bring your own equipment and save \$10 a load. Cost is \$60 per load or \$70 for screened material when using site's equipment. Share the cost with a few friends!

REQUIREMENTS: Because this site is public and set up for all ages to enjoy, just bring the basic requirements for your own safety and comfort. We should always have beverages/water, sunscreen/hats, sturdy shoes and the like but no hiking is required. In the water, wear appropriate footwear and move carefully. No alcohol.

SPECIAL CONDITIONS: If you choose to pan for gold in the river, you must use your own equipment. Check the website (www.thermalcitygoldmine.com) for more options. Fee: \$10.00 per person per day.

REGISTRATION: Maximum attendance will be limited to 35 persons. Please register so we have a head-count and can contact anyone on a wait list.

Registration and day-of-trip contact phone is 828-231-3555 (text or call) Kathryn Hackett-Fields (Trip Registrant). Email: khackettfields@gmail.com.

The Thermal City Gold Mine website is your best source for comprehensive information, and for camping details/costs: www.thermalcitygoldmine.com.

CHILDREN (Yes): The site encourages "ages 3 to 93" and adult supervision appropriate to ages. The flume is covered allowing fun rain or shine.

PETS (No): Best left safely and comfortably at home; not allowed when camping.

FACILITIES: Facilities are shaded and comfortable. There is a museum and rock shop as well as a variety of screen equipment for purchase. Picnic tables and beautiful surroundings. Limited on-site camping and cabins, check in advance if available and make your arrangements ASAP. Various lodging in the area.

FEE: \$10 per person. There may be additional fees depending on equipment and material desired.

ADDITIONAL INFORMATION: The Club will bring bottled water & juice, some ice and morning snacks along with a folding table and cooler for storing your lunch.

The city of Rutherfordton is less than 15 miles away with its own variety of attractions. Visit the museum where coins were minted from high quality gold.

DIRECTIONS: From Asheville, Hendersonville area Thermal City Gold Mine is reached from I-40 East, Exit 85, then US 221 South for 8.76 mi. If coming from the south, use I-26 to the merge with 74W at Columbus, NC. Continue on 74W to exit for Rt. 74/221 North, at Shiloh. Go toward Rutherfordton, not Spindale.

GPS: 35.5271422,-81.97038, or 35° 31' 37.76" 81° 58' 13/61"

CONTACT: Tim Barton may be contacted for general information, leave msg. at 828-577-4505. Registration and day-of-trip contact phone is 828-231-3555 (text or call) Kathryn (Trip Registrant)

IMPORTANT: DMC field trips are open only to members of clubs in the SFMS field trip sharing program. You will need to show your 2022 membership card to get in. Do not invite non-members.

June Birthdays

| | |
|-----------------------|-----------------------|
| 4 Elizabeth Kowalczyk | 23 Jonathan Kowalczyk |
| 4 Owen Perry | 24 Tonya Sitko |
| 5 Emma Allen | 25 Caryl Jean Nixon |
| 5 Ruth Kemper | 26 David O'Dell |
| 14 David Young | 27 Dianna O'Dell |
| 15 Matthew Kowalczyk | 28 Lori Willhoite |
| 17 Cliff Cantrell | Grayson Lester |

Anniversaries

| |
|-----------------------------|
| 8 Charlie & Lori Willhoite |
| 9 Jimi & Tonya Sitko |
| 12 Wayne & Polly Falkenberg |
| 19 Michael & Sheila Cape |
| 21 Chris Ross |
| 21 Lawrence & Diana Nelms |
| 29 Caryl & David Nixon |



June
Pearl

July Birthdays

| | |
|-------------------|-----------------------|
| 2 Katherine Allen | 12 Kathryn McCullough |
| 2 Veronica Dunn | 19 Kristi Kazi |
| 4 Don Sullivan | 19 Stacy Walbridge |
| 6 Isaac Burgess | 20 Buddy Wilson |
| 6 Ken McCormick | 25 C.G. Lester |
| 6 Elise Price | 26 Clara Goode |
| 7 Kyler Dunn | 27 Angela Kowalczyk |
| 9 Liz Cooper | 30 Bruce Kowalczyk |
| 9 Brant Kosten | 31 Donta Lattimore |
| 10 Cheryl Price | Kerry Lester |
| 12 Lucy Allen | |

Anniversaries

| |
|----------------------------|
| 3 Jim & Bonnie Treadway |
| 11 David & Nancy Hosmer |
| 27 Liliane Bector |
| 28 Steve & Sheila Tesh |
| 31 Stacy & Kathi Walbridge |



July
Ruby

The Huntsville Gem & Mineral Education , 7901 Bailey Cove Rd. SE, Huntsville AL 35802

Metal Smithing Instructors: Shelley Curran, Kathy Bowman, Jan Edmunds

Lapidary: Bill Friday, Michael Cape, James Yack, Bruce Kowalczyk, Anthony Zwilling, Shady Sanchez

Rocket City Jewelers: Judy Osmundson, Theresa Chivers, Leslie Malakowsky

Future Rockhounds: Karen Allen, Mike Harrison, Dee Morton

| | | |
|------------------|---|--|
| Monday | Metal Smithing | 5:30pm - 9:00pm |
| | Lapidary | Except May 2nd, 1st Monday each month 9:45am-2:00pm |
| | Lapidary | 5:30pm - 9:00pm |
| Tuesday | Lapidary | 9:00am - 2:00pm, 6:00pm - 9:00pm |
| | HGMS Meetings | 6:00pm - 9:00 4th Tuesdays |
| Wednesday | Lapidary | 6:00pm - 9:00pm |
| | Rocket City Jewelers 1st & 3rd Weeks | - 6:00pm - 9:00pm |
| | Rocket City Jewelers 2nd & 4th Weeks | - 2:00pm - 5:00pm |
| Thursday | Lapidary | 6:00pm - 9:00pm |
| | Metal Smithing | 5:30pm - 9:00pm |
| | GeoSciences | 6:30pm 2nd Thursdays (when programmed) |
| | Future Rockhounds | 6:00 4th Thursdays |
| Friday | Lapidary | 6:00pm - 9:00pm |
| Saturday | Metal Smithing | 9:00am - 3:00pm irregular 1st Saturday of the Month |
| | Lapidary | 9:00am - 2:00pm |
| Sunday | Lapidary | 12:00 to 3:00 |

2022 HUNTSVILLE GEM & MINERAL SOCIETY EXECUTIVE BOARDPresident— Anthony Zwilling - afzwillling@gmail.comVice President - Bill Friday - bill.Friday@earthlink.netRecording Secretary: James Yack - jamesgyack@gmail.comTreasurer: Clara Goode, 256-883-9194 - claragoode1@comcast.netNewsletter Editor: Bill Friday - 256-527-8227 - bill.friday@earthlink.net**Past President: Mike Harrison** - campcraft.mike@gmail.com

Directors at Large:

Gene Powers - genepowersgddm@gmail.comLes Bartel - lester.bartel@gmail.comShelley Curran - curranshelley1@gmail.comIsabel Leon y Leon- isabel.leonyleon@gmail.com**2022 COMMITTEE CHAIRS****Property: Michael Cape**macape@knology.net**Program Chair—Bill Friday**bill.friday@earthlink.net**Webpage: Leslie Malakowsky,**lmalakowsky@gmail.com**Auction Chair: Shelley Curran**curranshelley1@gmail.com**Membership: Theresa Chivers**wolfson929@gmail.com |**Field Trips: Bill Friday**bill.friday@earthlink.net**Hospitality: Open****Publicity: Open****Show Chair: Tony Smith, 256-603-3095.**tsmith@erc-incorporated.com**Show Vendor Chair: Lowell Zoller, 256-534-8803**Lzol@comcast.net**Show Publicity Chair - Tony Smith**tsmith@erc-incorporated.com**Show Treasurer: Clara Goode, 256-883-9194**claragoode1@comcast.net**Mineral ID: Lowell Zoller**Lzol@comcast.net**Facility Chair: Bill Friday**bill.friday@earthlink.net

PURPOSE OF THE SOCIETY: The Huntsville Gem & Mineral Society is a non-profit educational organization for people interested in mineralogy, geology, paleontology, and related lapidary arts. Its primary purpose is the education and enjoyment of the members and the general public in these areas. This purpose is accomplished through programs and activities, shows, lectures to school children and organizations, and exchange of rocks, minerals, artifacts, and newsletters.

DUES: Annual dues are \$20.00 per person, \$25.00 per family, and are due on January 1st of each year

Membership Applications may be found at our webpage www.Huntsvillegms.org or at the HGMS Education Center during a meeting or at one of our activity periods: 7901 Bailey Cove Rd SE, Huntsville, AL 35802

Meetings: 4th Tuesday of the month except for March Auction, June picnic, Christmas Dinner and major holidays.

The Society is affiliated with the American Federation of Mineralogical Societies ,

the Southeast Federation of Mineralogical Societies, and the Dixie Mineral Council

Federation Newsletters: DMC: <http://www.amfed.org/sfms/dmc/dmc.htm>

SFMS: <https://www.southeastfed.org/newsletter> - new, under construction

AFMS: www.amfed.org/news/default.htm



2022 CALENDAR

- 25 Jun '22 (Saturday) Annual Picnic and Rock Swap 8:00am to 4:30pm
Huntsville Monte Sano State Park, Trailhead Pavilion
- 28 Jun'22 - Regular HGMS Meeting, Huntsville Gem & Mineral Education Center
7901 Bailey Cove Rd SE, Huntsville, AL 6:00pm
- 26 Jul '22 - Regular HGMS Meeting, Huntsville Gem & Mineral Education Center
7901 Bailey Cove Rd SE, Huntsville, AL 6:00pm
- 23 Aug'22 - Regular HGMS Meeting, Huntsville Gem & Mineral Education Center
7901 Bailey Cove Rd SE, Huntsville, AL 6:00pm
- 22 Sep '22 - Regular HGMS Meeting, Huntsville Gem & Mineral Education Center
7901 Bailey Cove Rd SE, Huntsville, AL 6:00pm
- 14-16 Oct '22 Fall Gem Jewelry & Mineral Show
Jaycee Building, 2180 Airport Rd, Huntsville AL
- 25 Oct '22 - Regular HGMS Meeting, Huntsville Gem & Mineral Education Center
7901 Bailey Cove Rd SE, Huntsville, AL 6:00pm
- 22 Nov'22 - Regular HGMS Meeting, Huntsville Gem & Mineral Education Center
7901 Bailey Cove Rd SE, Huntsville, AL 6:00pm
- 13 Dec'22 - Christmas Dinner - Date tentative, Time, and Place to be determined

Deadline for Next Newsletter
July 17, 2022

Dated Material
Do not Delay

June 2022

Rocket City Rocks & Gems
Bill Friday, Editor
2508 Excaltibur Dr.
Huntsville, AL 35803