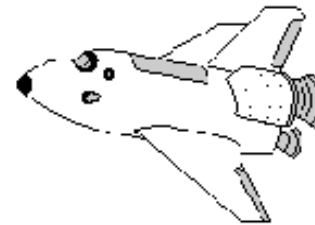
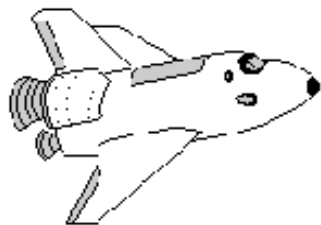


ROCKET CITY ROCKS & GEMS



The Monthly News Bulletin of the Huntsville Gem & Mineral Society, Huntsville, Alabama

Volume 48 No. 9

"We'll go to the Moon for a Rock"

September 2016

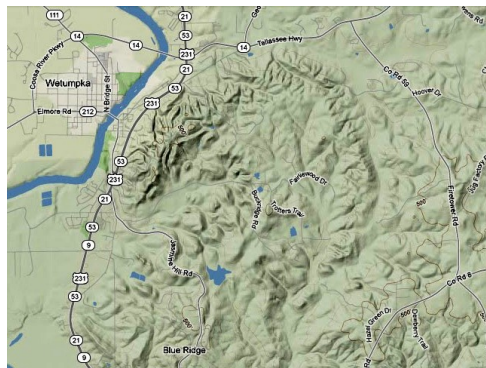
INSIDE THIS ISSUE

Minutes of the Aug Mtg	2
Fall Show Reminders.....	3-5
Jewelry Activity Corner.....	6
Pebble Pups	6
Brad's Bench Tips	7
Feature Article.....	8
DMC Field Trip.....	9
Sep/Oct Birthdays	10
& Anniversaries	
Lapidary Lab Schedule	10
2016 Officers & Committee	
Chairmen	11
Calendar.....	12

Sep 27 Program –

Wetumpka Meteor Crater

65 Million years ago, a huge rock punched a hole in Alabama twice the size of the one in Flagstaff AZ. The area was under a shallow sea at the time so the blast was made worse by a great tidal wave. More information on Page 4.



Visit us at www.huntsvillegms.org/ and www.facebook.com/HuntsvilleGMS



Huntsville Gem & Mineral Society (HGMS) 2016. Reprinting Rights are granted for all material (except for minutes of the meeting and copyrighted articles) to any organization officially affiliated with the American Federation of Mineralogical Societies (AFMS) or Southeastern Federation of Mineralogical Societies (SFMS), provided credit is given to the author, the original publication, and this newsletter

Minutes of August 23, 2016, Meeting

President Mike Harrison opened the meeting at 6:30 pm. It was moved and seconded to approve the July minutes as printed in the newsletter. Treasurer Clara Goode reported a balance of \$5011.37 in our club account.

Mindy Schell reported that there would be one more jewelry class in September, with no more jewelry classes until next year. Mindy also reported that 14 certificates had been issued for the silver class, with three more students signed up for certification this year.

Bill Friday reported on the need for two new 10- or 12-inch saws for the lapidary shop. More data will be gathered regarding price and quality, and a vote will be held in September to authorize this purchase. Bill repeated the hours of shop availability.

Caryl Nixon thanked members for providing refreshments. She said two people had agreed to help with the Show Set-Up Dinner, and one or two more are needed as backup volunteers.

Lori Willhoite noted that this will be her last year as Volunteer Chair for the Gem, Jewelry, and Mineral Show. If someone wants to volunteer now to be the Chair for next year, Lori will be glad to train that person as we prepare for this year's show. Lori noted that we still need many volunteers for all activities and that we need Chairs for the following activities: Tickets, Displays, and Gem Dig. The original volunteer Chair for the Gem Dig now has a conflict and the chair position is open again. Please contact Lori at the address and phone number listed in the newsletter.

Tony Smith reported that we have 18 dealers at the show, all but one who was at last year's show. Tony has posters and flyers available for distribution, and will have yard signs available at the September meeting. Boy Scouts and American Heritage Girls will be given presentations. Bill Friday and Brian Burgess will be talking about rocks and minerals to children in lines for the Flume and Gem Dig activities.

Lowell Zoller talked about the publicity in progress. Several billboards will have our ads as people come into Huntsville, and both TV and radio ads have been purchased. Our show is now on every local calendar and in lapidary journals. We still need word-of-mouth and social media advertising. **Lowell asked that every member who is on social media to contact everybody they know about our show using every social media available to them.**

Deb Neis will be Demonstrations Chair for the show and she asked for volunteers to demonstrate their skills. Charlie Willhoite will be teaching Deb how to facet during the show. Dan Hester has agreed to demonstrate carving. Deb recommends bringing your own cushions or your own chair for longer demonstrations.

Four display cases have been claimed and one more is available. It would be delightful if members donated items for door prizes. Vendors will also donate items, but there are many hours in the show.

Visitors and new members were welcomed.

At 7:15, Mike Harrison presented the program on The Joy of Tumbling, subtitled "What I have learned about rock polishing with rotary tumblers." Mike handed out a print-out of his presentation and stated that those who did not get a copy could obtain one by emailing him at wm.harrison.123@gmail.com.

Mike has several tumblers set up in his garage and runs them 24 hours per day, 7 days per week. Mike brought examples of his tumblers: three, six, and nine pound barrels. Mike uses five steps in his process: coarse, medium, pre-polish, polish, and burnishing.

Mike talked about the necessity of making sure not to get contamination from one size of tumbling media into the next and demonstrated his obsessive adherence to this rule by showing some of the many individual containers he uses which are marked by grit and step in the process. Mike recommended purchasing the 3 pound tumblers from Harbor Freight and getting the extended warranty on each as one will wear it out before the one year warranty is out if you run your tumblers 24/7. He also recommended using 3 in 1 oil on plastic bearings in the tumblers.

Mike went into the amount of rock to load in each barrel, how much polish to use, and the length of time to leave rocks in the tumbler. Mike recommends tumbling rocks of about the same hardness, and use multiple sizes in each batch. "Scraps from cabs make good things to put in there." He does not tumble anything under Mohs hardness of 5.

Mike answered questions and ended the meeting, leaving time for snacks and conversation.

H.G.M.S. Annual Gem, Jewelry, and Mineral Show is Coming Up this October!

The Club is presenting its 2016 Show this October on the 7th, 8th, and 9th at the Jaycees Community Building again, at 2180 Airport Rd. S.W. in Huntsville, where we've had it the last few years. There will be about 18 Dealers offering a wide variety of minerals, crystals, jewelry, lapidary and rock-hunting supplies and more for sale. We'll also have Displays of gems, minerals, and jewelry, Demonstrations of lapidary and related arts, and a Mining Flume for all to enjoy. For the kids, we'll have a Gem Dig and activities based on our Pebble Pups Program. There will also be hourly Door Prizes and Raffle Prizes to try for.

The Show hours will be as follow: Friday & Saturday - 10am to 6pm, Sunday - 12 noon to 5pm. Donations of \$3.00 are requested at the door, with children under 5 free, and there will be weekend passes available for \$5.00. A Snack Bar will be available during the Show, and there will still be plenty of FREE parking for everyone. We had a great turnout last year, and we're looking forward to another big Show this year. So spread the word to all your friends, and come join us for a fun weekend this Fall!

Tony Smith, Show Chairman, 256-603-3095

MORE VOLUNTEERS NEEDED FOR THE SHOW

We're working hard getting ready for our Show Oct. 7 to 9, but still need alot more Volunteers for it. Please sign up on the Sign-Up Sheets at the Sep meeting if you can help, or contact a Chairman. If you don't know until Show week that you can help, please come and let us know - we do take walk-in help, because we always need more help somewhere. Just check at the area you're interested in to see if they need help right then, or come see me at the Info Booth to find out where the need is greatest. It's a great way to learn more about gems and minerals and get to know other members.

Wed Oct 5, there will be a Loading Session at the Storage Unit on Winchester Rd., and Unloading at the Jaycees Building. There will be another Crew needed for Sunday evening after the Show to load up and take everything back.

Thursday is Set-Up Day, starting at 7:30am, and this takes lots of people. We still need a person or a group to sign up and bring in their "Treasures" for our last available Display Case. And there's a Set-Up Dinner at 6:00 for all the hard-working Volunteers and Dealers. Caryl Nixon is Chairman for that, and needs more workers, and I'm in charge of getting folks to bring food dishes for it.

On Friday through Sunday we still need help with Tickets, Co-Chaired by Ben Carroll and Greg Somsel; Info Booth, which I'm Chairing; Demonstrations, Chaired by Deb Neis; Kids' Activities, Chaired by Brian Burgess; Mining Flume, Chaired by Mark Habercom; and the Gem Dig, which I still don't have a Chairman for, and would love to have someone step up to take charge of, or Co-Chair.

Take-Down will start on Sunday at 5:00, taking a lot more workers until the job is done.

If you're interested in helping in any way, please sign up on the sheets at the Sep meeting, noting the times or days you prefer, so the Chairmen can call to schedule you. Or you can contact the Chairman of the Area you're interested in, or me to relay your name to them. Shifts during the Show are usually for 2 hours, but any help is appreciated.

There is plenty of free parking at the Jaycees Building. The overhead loading door is at the East end of the building, and it will be open on Set-Up Day, so if you come then and have a lot of stuff to bring in, try to park near there and we'll try to have dollies and helpers to help you get them in - just ask someone for help. Please remember to dress comfortably and bring any food or drinks you'll need with you, especially Wed and Thur, because there won't be any available then. There will be a Snack Bar open during the Show. There will be a First Aid Kit at the Info Booth if you need it, but please try to take care of yourselves, so we all make it through the Show safely.

Please wear your Club Name Badges at the Show if you have them. It lets our guests know who the members are, to ask questions of when they need to, and helps us all get to know each other better. There will be "Host" and "Exhibitor" ribbons, too at the Info Booth if you'd like to wear one or both,

Again, please sign up to help if you can, and help all you can. There are only a few weeks left before the Show, so time's getting short to get everything done, but if all the members pitch in where they can, we can do it. My phone number is 256-340-3448 and my e-mail address is lewillhoite@hotmail.com.

--Lori Willhoite (Show Volunteer Coordinator)

Update on the Upcoming 2016 Fall Show

2016 FALL SHOW VOLUNTEER SIGNUPS

Many Volunteers Are Needed for Our Show this October

Many of us are busy organizing the Club's annual Gem, Jewelry, & Mineral Show for Oct. 7 - 9 this year. It will be at the Jaycees Community Building again at 2180 Airport Road S.W. in Huntsville (on Jaycee Way). Our new location is better, but it still takes lots of help from all of our members to make it a good show. It's a great opportunity for members to get together and learn more about gems and minerals, and it can be a lot of fun. We also get to teach others about our hobby and make money to support the Club's many activities. So please mark your calendars now for Oct. 5 - 9, Wed. to Sun.) and plan to help out as much as you can.

There are several different Activities/Areas to help with:

- (1) Wed., Oct. 5, we'll need a few Volunteers to mark the Show Layout on the Jaycees Building floor, and others to load up the Club's Show Supplies at the Winchester Storage Unit and unload it at the Jaycees Building.
- (2) Set-Up Day - Thurs., Oct. 6, from 7:30am to about 6pm - we'll need a lot of workers to help unload Club and Dealers' supplies and equipment at the Jaycees Building and help set them up.
- (3) Set-Up Dinner - Thurs., 4:30 on. The Dinner is at 6:00, for Dealers and Volunteers, and we'll need workers to set it up, serve it, and clean up after it. We'll also need lots of Food Donations for it.
- (4) Thursday we'll need some members to bring in and set up Displays of their collections to put in cases which the Club provides. If a few members want to combine their treasures in one Display, that's great, too.
- (5 - 10) During the Show, on Fri., Sat., & Sun., we'll need workers for the Ticket Table, Information Booth, Mining Flume, Gem Dig, Kids' Activities, and Demonstrations of faceting, cabbing, carving, jewelry-making, etc.
- (11) At 5pm on Sun., we'll start our Take-Down, and it'll take a lot of workers to take everything apart and load it back up.

We'll also need to have 1 or 2 Work Days at our Storage Unit on Winchester Road in Aug. or Sept. to repair Display Cases and other items. And Bagging Sessions will be needed for the Flume material, and other Sessions to break up Gem Dig material and load it into the Cart. Please watch for announcements of dates and times to help out with these.

We have some of the Chairmen we need, but still need a few more. Caryl Nixon is Chairing the Set-Up Dinner, Ben Carroll is Chairing the Ticket Table, Deb Neiss is Chairing Demos, Brian Burgess is Chairing the Kids' Activities, Mark Habercom is Chairing the Mining Flume (and would love to train someone to take over for him), and I'll be Chairing the Info Booth and Dinner Food Donations. We still need Chairs for the Gem Dig and Displays, so please think about helping with these. Feel free to ask me any questions you might have about them, and let me know if you're interested. Due to health issues, I'll be stepping down as Volunteer Coordinator after this year, so I'll be glad to train anyone who might be interested in taking this job next year. If you'd like to Volunteer to help with the Show in other ways, please sign up on the Sign-Up Sheets at the meetings, noting the days or times you prefer. Or you can contact the Chairman of the Area you're interested in directly, or me. Shifts during the Show are usually for 2 hours, but any help is appreciated. If you have any questions, feel free to ask Tony Smith, the Chairmen, or me. My phone # and e-mail address are in the back of the Newsletter and on the Website. --Lori Willhoite, Show Volunteer Coordinator

Fall Show Reminders

We request that every member use every possible medium to advertise the show: word of mouth, Flyers (which will be available at the August meeting), Facebook, Twitter, Instagram, Pinterest, etc. Although we are approaching Radio, TV, and print media, Social Networking is the most effective tool today.

30 sec. Radio/TV announcement for the WEEK OF THE SHOW

The 49th Annual Gem, Jewelry, and Mineral Show will be this Friday, October 7, through Sunday October 9th at the Jaycee Community Center on Airport road in Huntsville. This is the largest jewelry show in the region and the ONLY rock, mineral and gem show. National and International Dealers will be there with fossils, gems, lapidary materials, art pieces, and finished costume and fine jewelry of every type and price. Bring the whole family! Kids can look for treasures in the gem dig, mining flume, and more! The 49th Annual Gem, Jewelry, and Mineral Show THIS weekend! Learn more at Huntsville G M S dot ORG.

Short narrative

The 49th Annual Gem, Jewelry, and Mineral Show will be Friday, October 7, through Sunday October 9th at the Jaycee Community Center on Airport road in Huntsville. This is the largest jewelry show in the region and the ONLY rock, mineral and gem show. National and International Dealers will be there with fossils, gems, lapidary materials, art pieces, and finished costume and fine jewelry of every type and price. Bring the whole family! Kids can look for treasures in the gem dig, mining flume, and much more! Fascinating displays and demonstrations. Hourly drawings. Food service. FREE parking. The 49th Annual Gem, Jewelry, and Mineral Show

October 7-9. Learn more at Huntsvillegms.org.

Location: The Jaycee Community Center at the old airport, 2180 Airport Rd, Huntsville, AL 35801

Dates and Hours:	Friday, October 7	10:00 am to 6:00 pm
	Saturday, October 8	10:00 am to 6:00 pm
	Sunday, October 9	12:00 pm to 5:00 pm

Donation suggested: \$3 for adults.

\$1 for primary & secondary students.

Children under 5 FREE.

\$5 for adult Weekend passes

Web site: www.huntsvillegms.org

Contact: 256-534-8803



September Meeting Program

We will view a video provided by Carl Craig on the Wetumpka Impact Crater. The first geological survey of Alabama in 1891 noted that the area around Wetumpka was “structurally disturbed.” However, proof of the disturbance as an impact crater was not found until the 1970s, and it took many more years before explanation became accepted. This short video shows maps of the crater and explanations by geologists about the impact. We ask that members bring any rocks or minerals they have from the Wetumpka area for display and discussion.



Pebble Pups - Discoveries from Erosion

Thursday Oct 20th 6:00 to 7:00pm - Space & Rocket Center

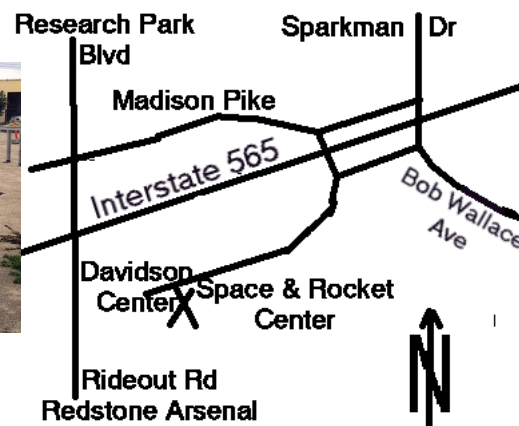


Please RSVP to Brian, **256-746-0641**,
bburgess771@gmail.com,

Brian Burgess will continue the exploration of the effects of erosion

November 17— Where do Minerals Come From?

Kids ages 8 through 13 are invited to join this Junior Rock Enthusiasts Group. All participating families must have Family-Member status (the \$20 rate) in the HGMS and an adult family member must be present during the meeting. Pups family membership is an additional \$10/year. **We are now meeting at the Space & Rocket Center. Enter the Davidson Bldg (lower door closest to the Saturn 5 standing rocket) Thanks**



Jewelry Activity Corner

By Mindy Schell

This has been a great year for the Jewelry Activity Group. But what with the upcoming Show, and wear and tear on the staff, it seemed a good time to regroup and be ready for a full season starting in January.
Stay Tuned.



ROCK HOUND CONNECTION ROCK SWAP AND DIG!!

September 24th, and 25th. We have vendor spots open

The Rockhound Connection Fall Gathering for the east coast will be at The Hogg Mine. The gathering will be September 24-25th. This will be a rock swap and dig. So bring your rocks and tools. The Hogg Mine will be open Thursday Through Monday to accommodate Travelers and you can dig every day if you would like. The cost is \$35 per person, per day. Children 16 and under dig free. If you have any questions send me an email rockdgr@yahoo.com or send me a message from the Website www.hoggmine.com Thanks.

Brad's Bench Tips

"Bench Tips for Jewelry Making" and "Broom Casting for Creative Jewelry" are available on Amazon

www.BradSmithJewelry.com

Recommended as a good buy and good reading for all who like to have better lapidary skills.
S.S. <http://www.goodreads.com/author/show/>



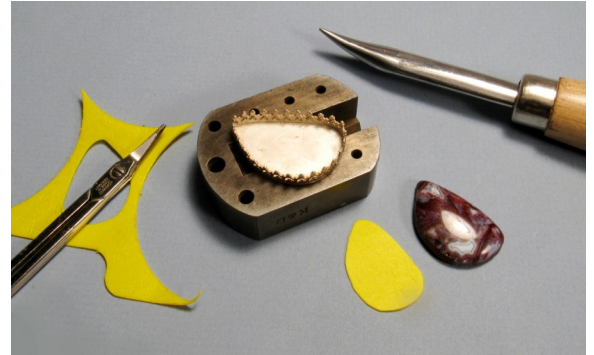
RAISING A CABOCHON

When a cabochon sits too low in a bezel, the bezel hides a lot of the stone. The solution is to either sand down the bezel height or boost up the stone. If you're going to raise it up, question is what is the best material to use ?

I was taught to use fine sawdust but now think that might be a problem when used in rings. I reason that rings will frequently get wet, which would cause the sawdust to swell in size and push the stone against the bezel. Then when the sawdust dries out, the stone would be a little loose.

In any case, I now prefer pieces of plastic sheet to boost up my stones.

Pieces are readily available from product packaging or from old credit cards. I just cut a piece to loosely fit the bezel and drop in the stone (with some dental floss) to check it's height.



TRANSPARENT CAB

When bezel setting a transparent cabochon in silver, I usually cut out the back of the bezel to allow background light to show off the colors and patterns in the stone. If this is not possible or appropriate, I worry that the silver bezel will tarnish under the stone and will ruin its brilliance. What to do?

My solution is one extra step before setting the stone. I place a piece of thin silver Mylar plastic under the stone to act as a mirror that will never tarnish. Mylar is readily available in craft and gift wrap stores, or in a pinch from a party balloon supplier. You may even want to experiment with using colored or patterned Mylar (i.e. diffraction pattern) under some stones.

REMOVING SOLDER FROM A BEZEL

Sometimes when you solder a bezel to a base plate, you end up with excess solder that needs to be removed before setting the stone. My choice of tool for this is called an "Inverse Cone" bur used in a rotary tool or flexshaft. It cuts on both the bottom and the side and is shaped so that there's less chance of cutting into the bezel wall than if you used the more common cylinder bur shape. I find the 2 mm size useful for almost any bezel.



Mineral of the Month – Septarian Concretions

By Leslie Malakowsky

Septarian concretions or *septarian nodules*, are actually a special type of rock that contains angular cavities or cracks called "septaria". The word comes from the Latin word *septum* meaning "partition" and refers to the cracks/separations that commonly occur in this rock. There is another (albeit incorrect) explanation of the word septarian: that it comes from the Latin word *septem* meaning "seven" and refers to the number of cracks. Cracks are highly variable in shape and volume, and their size indicates the degree of shrinkage that occurred as the rock formed. Radially oriented cracks that taper towards the margins of septarian concretions is evidence that the material at the periphery was stiffer while the inside was softer, presumably due to a gradient in the amount of cement precipitated while the rock formed.



The process that creates septarian concretions remains a mystery. A number of mechanisms, for example, the dehydration of clay-rich, gel-rich, or organic-rich cores; shrinkage of the concretion's center; expansion of gases produced by the decay of organic matter; brittle fracturing or shrinkage of the concretion interior by either earthquakes or compaction; and others, have been proposed for the formation of septaria (Pratt 2001). But experts are uncertain, which, if any, of these and other proposed mechanisms is responsible for the formation of septaria (McBride *et al.* 2003). Septaria usually contain crystals precipitated from circulating solutions, usually of calcite. Siderite or pyrite coatings are also occasionally observed on the wall of the cavities present in the septaria, giving rise respectively to a panoply of bright reddish and golden colors. Some septaria may also contain small calcite stalactites and well-shaped millimetric pyrite single crystals.

A spectacular example of septarian concretions on a much larger scale, are the Moeraki Boulders, which are as much as 3 meters (9.8 feet) in diameter. These concretions are found eroding out of Paleocene mudstone of the Moeraki Formation exposed along the coast near Moeraki, South Island, New Zealand. They are composed of calcite-cemented mud with septarian veins of calcite and rare late-stage quartz and ferrous dolomite (Boles *et al.* 1985, Thyne and Boles 1989).

Very similar concretions are the "Koutu Boulder", which are also as much as 3 meters (9.8 feet) in diameter. They litter the beach between Koutu and Kauwhare along the south shore of the Hokianga Harbour of Hokianga, North Island, New Zealand. The much smaller septarian concretions found in the Kimmeridge Clay exposed in cliffs along the Wessex Coast of England are more typical examples of septarian concretions (Scotchman 1991).

Septarian nodules have for many years been made into bookends and paperweights. I have also seen this rock carved into decorative objects such as eggs and even shells which are favorite items at rock shows!

References: Wikipedia



FIELD TRIP FOLLIES - Brian Burgess

Richardson Landing - North of Memphis near Millington on a Mississippi River gravel bar. This will be sometime soon in the summer now that the river is getting low enough for access. I am in contact with an individual that is monitoring the river level. Free



Dixie Mineral Council Field Trips

The Southeast Federation of Mineralogical Societies, Inc



The Friendly Federation - Founded in 1976 to serve
DMC Program of the SFMS Field Trip Committee
Copyright © All rights reserved.

An Official Field Trip of the Memphis Archaeological and Geological Society (Memphis, TN) (HOST)
An Official Field Trip of the Huntsville Gem & Mineral Society

Saturday, October 15, 2016
Memphis Stone and Gravel
3745 Highway 51 North, Southaven, MS. Desoto County
8:30 AM to 3:00 PM Central

TRIP: First trip to new mine that opened in May. MAGS will provide snacks, drinks, door prizes and best finds prizes. MAGS and Memphis Stone and Gravel will provide lunch.

COLLECTING: Chert gravels with fossils (Mississippian, Devonian, and Silurian), petrified wood, agate, conglomerate, quartz and other rocks and minerals associated the Upland Complex of Pleistocene / Pliocene age. We will be collecting the gravel from stockpiles.

BRING: Bucket and rock hammer, we will be surface collecting and no digging is necessary. Spray bottle with water is very helpful. Bring plenty of water and sunscreen!

FEE: Free

CHILDREN: Ok with adult attendance and supervisor at all times.

PETS: Must be leashed at all times

SPECIAL CONDITIONS: All safety rules must be followed. A copy of the safety rules can be obtained from the Field Trip Leader. Remember, any time eye hazards may exist, such as hammering or prying, safety glasses **MUST** be worn. This is an active mine with dangerous areas. All young children must be under **CONSTANT ADULT SUPERVISION** and **NEVER** allowed to roam around. Shoes must be closed and laced (no flip-flops or Crocs).

DIRECTIONS AND WHERE TO MEET:

WHEN: 8:30 am to 3:00 pm

WHERE: Memphis Stone and Gravel Company's Desoto Plant facility and we will collect there. The facility is located at 3745 Highway 51 N, Southaven, MS.

Directions to our meeting place:

From Northbound or Southbound I-55, take Church Street exit. Travel west to Highway 51.

Take a left(south) and travel to **3745 Highway 51 North**

Drive Time: From I-55 exit about 10 minutes,

From Huntsville, AL about 4 hours, 210 miles - GPS coordinates 34°48'30.50" 89°59'24/46"

September Birthdays

1 Jennifer Pinkley	15 Jan McGee
1 Gayle Joyce	16 Charlie Willhoite
1 Wayne Hastings	16 Eric Emerson
3 Gerdy Wyatt	16 Michael Ray
5 Elke Ardal	16 Yamile Nuckels
7 Aubrey Eve	18 Samantha Lindberg
7 Mike Harrison	19 Mitzi Cartee
8 David Lehner	22 Bonnie Tanner
10 Marie Aldridge	23 Renee' Gunnink
13 Mark Falkenberg	29 Linda Lindberg
14 Larry Augsburg	30 Jonathan Lear
14 Sheila Tesh	30 Miria Finckenor

Anniversaries

September
Sapphire 

1 Frank & Shelley Curran	18 Rebecca Purcell
6 Delora Ward	29 Mike & Theresa Chivers
Bruce & Allison Kowalczyk	30 Michael & Sharon Bedard
6 Roger Broussard & Jessica Babcock	

October Birthdays

2 Brian Hastings	16 Rhonda Hall
3 Theresa Chivers	18 James Lowery
5 Grant Springer	20 Sam Tuminello
5 King Le	21 Jeannie Green
7 Mark King	22 Wendy Poff
10 Bonnie Treadway	23 Jordan Steelman
11 Diana Nelms	27 Jake Walters
13 Ben Hunneycutt	30 David Nixon
14 Trey Worthy	30 Madison Phillips



Anniversaries

October
Opal

4 Walter & Lawana Cowart	21 Art & Yvonne McGuire
9 Howard & Dolores Kuettir	21 Trey Worthy
9 Bill & Joyce Walters	24 Leslie Malakowsky
	29 Daniel & Susan Hessler

September 2016 - Senior Center Lapidary Lab Schedule Lapidary, Silver Jewelry and Wood Carving

To use lapidary equipment, you must be certified unless a licensed instructor is present
- currently: B. Friday, W. Falkenberg, & Chris Kalange

Monday	7:30am- 9:00am	Open Lab: Lapidary, certified HGMS 60+
	9:00am- Noon	Silver Jewelry - Ron West, Instructor - Seniors & HGMS 60+
Tuesday	Noon -4:30pm	Open Lab: Lapidary, certified HGMS 60+
	7:30am-9:00am	Open Lab: Lapidary, certified HGMS 60+
Wednesday	9:00am—Noon	Silver Jewelry - Ron West, Instructor - Seniors & HGMS 60+
	Noon -3:00 pm	Silver Jewelry- Terry Clarke, Instructor - Seniors & HGMS 60+
Thursday	3:00pm—4:30 pm	Open Lab: Lapidary, certified HGMS 60+
	6:00pm-9:00pm	Open Lapidary & Open Jewelry - certified HGMS 18+
Friday	7:30am -4:30 pm	Open Lab: Lapidary - certified HGMS 60+
	6:00pm-9:00pm	Open Lapidary & Jewelry - certified HGMS 18+
Friday	7:30am -4:30 pm	Open Lab: Lapidary - certified HGMS 60+
	9:00am-11:30am	Silver Jewelry- Ron West, Instructor - Seniors & HGMS 60+
Friday	Noon-3:00pm	Wood Carving - Copeland, Instructor - Seniors & HGMS 60+
	3:00pm-4:30 pm	Open Lab: Lapidary -certified HGMS 60+
Friday	6:00pm—9:00pm	Metal Smithing & Jewelry Classes— HGMS 18+
	7:30am - 12:00am	Open Lab: Lapidary - certified Seniors & HGMS 60+

2016 HUNTSVILLE GEM & MINERAL SOCIETY OFFICERS

President: Mike Harrison 256-797-2435

wm.harrison.123@gmail.com

Vice President—Mindy Schell 334-790-0671

mindy.schell@yahoo.com

Recording Secretary: Leslie Malakowsky, 256-755-0479

lmalakowsky@gmail.com

Treasurer: Clara Goode, 256-883-9194

clarag1964@gmail.com

Newsletter Editor: Bill Friday, 256-527-8227

bill.friday@earthlink.netDirectors at Large: Chris Kalange—ckalange@comcast.netBruce Kowalczyk—256-424-2197 arkowalczyk@aol.comBrian Burgess, Ex Officio - bburgess771@gmail.com 256-746-0641Federation Liaison - Charlie Willhoite - 256-340-3448—cdwillhoite@yahoo.com

2705 Jarvis Street S. W. Decatur AL 35603

2016 COMMITTEE CHAIRS

Membership: Bill Friday— 256-527-8227

bill.friday@earthlink.net

2508 Excalibur Dr. Huntsville AL 35803

Scrapbook: Dianna O'Dell, 256-828-1813

Librarian: Leslie Malakowsky, 256-755-0479

Club Publicity: Jennifer Pinkley 931-233-0420

Education & Craftsmanship: vacant

Field Trips: Brian Burgess, 256-746-0641

Hospitality: Caryl Nixon 256-426-5061

caryl.nixon@outlook.com

Mineral ID: Wayne Falkenberg—

falkenbergwp@comcast.net

(William Holland offers a class for this)

Property: Chris Kalange, 256-883-7627

ckalange@comcast.net

Program Chair—Myra Soroczak 256-446-9938 -

Soroczak@yahoo.com

Show Chair: Tony Smith, 256-603-3095.

Show Vendor Chair: Lowell Zoller, 256-534-8803

Show Volunteer Chair: Lori Willhoite 256-340-3448

2705 Jarvis St S. W. Decatur AL 35603

lewillhoite@hotmail.com

Show Publicity Chair: Tony Smith, 256-852-3210

Show Treasurer: Clara Goode, 256-883-9194

clarag1964@gmail.com

PURPOSE OF THE SOCIETY: The Huntsville Gem & Mineral Society is a non-profit educational organization for people interested in mineralogy, geology, paleontology, and related lapidary arts. Its primary purpose is the education of the members and the general public in these areas. This purpose is accomplished through programs, shows, lectures to school children and organizations, and exchange of rocks, minerals and artifacts.

DUES: Annual dues are \$15.00 per person, \$20.00 per family, and are due on January 1st of each year

Membership Applications may be found at our webpage www.Huntsvillegms.org, at meetings, or the lab

MEETING PLACE: Huntsville/Madison County Senior Center, 2200 Drake Ave, Huntsville, AL at 6:30pm.

DATE: Fourth Tuesday of each month except for June picnic/rock swap, Christmas Dinner and major holidays.

Federation Liaison: Huntsville Gem & Mineral Society, 2705 Jarvis St SW, Decatur AL 35603, Attn: Charlie Willhoite

The Society is affiliated with the American Federation of Mineralogical Societies ,
the Southeast Federation of Mineralogical Societies, and the Dixie Mineral Council

Federation Newsletters:

SFMS: www.amfed.org/sfms/lodestar_newsletter.html

AFMS: www.amfed.org/news/default.htm

DMC: http://www.amfed.org/sfms/_dmc/dmc.htm



2016-17 CALENDAR

- 27 Sep '16 - Regular HG&MS Meeting, Madison County Senior Center,
2200 Drake Ave, Huntsville, AL 6:30pm
- 6 Oct '16 - Thursday Setup for Fall Show, Dealers & Workers evening meal
- 7-9 Oct '16 - Fall HGMS Gem Jewelry Show - Jaycees Bldg, 2180 Airport Rd
Sunday takedown 5:00
- 25 Oct '16 - Regular HG&MS Meeting, Madison County Senior Center,
2200 Drake Ave, Huntsville, AL 6:30pm
- 22 Nov '16 - Regular HG&MS Meeting, Madison County Senior Center,
2200 Drake Ave, Huntsville, AL 6:30pm
- 6 Dec '16 - **Tentative** - Christmas Dinner Meeting, Madison County Senior Center Cafeteria
Catered Meal, bring an exchange gift if you wish
- 24 Jan '17 - Regular HG&MS Meeting, Madison County Senior Center,
2200 Drake Ave, Huntsville, AL 6:30pm
- 28 Feb '17 - Regular HG&MS Meeting, Madison County Senior Center,
2200 Drake Ave, Huntsville, AL 6:30pm
- 28 Feb '17 - Regular HG&MS Meeting, Madison County Senior Center,
2200 Drake Ave, Huntsville, AL 6:30pm
- 28 Mar '17 - Regular HG&MS Meeting, Madison County Senior Center,
2200 Drake Ave, Huntsville, AL 6:30pm

See Pebble Pups Schedule on Page 6

Deadline for Next Newsletter— October 15, 2016

Rocket City Rocks & Gems

Bill Friday, Editor
2508 Excalibur Dr.
Huntsville, AL 35803

HGMS September 2016

Dated Material
Do not Delay