

ROCKET CITY ROCKS & GEMS



The Monthly News Bulletin of the Huntsville Gem & Mineral Society, Huntsville, Alabama

Volume 51 No. 7

"We'll go to the Moon for a Rock"

July 2019

INSIDE THIS ISSUE

President's Note	2
Show Competitive Displays.....	2
May Meeting Minutes	3
Update on Possible new HGMS home.	4
Rocket City Jewelers	5
Metalsmithing Corner.....	6
Pebble Pups	7
GeoSciences.....	7
Mineral of the Month	8
Brad's Bench Tips	9
May/June Birthdays	
& Anniversaries.....	10
Lapidary Lab Schedule	10
2019 Officers & Committees.....	11
Calendar.....	12

Competitive Display Cases for the Fall Show

The Southeast Federation of Mineralogical Societies will be holding their Annual Business Meeting during our Fall Show. Most of their activities will be offsite from the Jaycees Bldg, but between meeting periods, most will visit our extravaganza. With the SFMS presence come several traditional opportunities.

One that will be of interest to many of us is the opportunity for entering a competitive display of some part(s) of your hobby interest area(s) - jewelry, craft creations, lapidary, fossils, collections, artifacts, or anything else relevant to the Show Theme.

There will be experienced judges coming with the SFMS, where besides choosing the best entries, they will provide coaching for future opportunities.

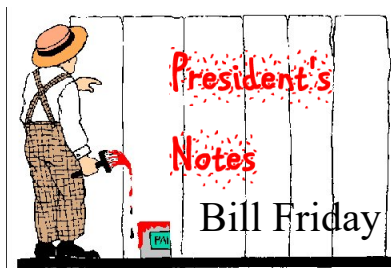
The July Meeting program will provide guidance for creating a display - competitive areas, rules, judging criteria, levels of expertise, prizes. (non-monetary but nice), preparation, and arrangement of the display contents. Mike Harrison will have a sample case on hand at the meeting for illustrating how one should prepare a winning exhibit.

More information below.

www.huntsvillegms.org/ - www.facebook.com/HuntsvilleGMS -



Huntsville Gem & Mineral Society (HGMS) 2019. Reprinting Rights are granted for all material (except for minutes of the meeting and copyrighted articles) to any organization officially affiliated with the American Federation of Mineralogical Societies (AFMS) or Southeastern Federation of Mineralogical Societies (SFMS), provided credit is given to the author, the original publication, and this newsletter



The Picnic was great, with 58 members & families there to share the excellent food (can't beat potluck), fellowship, and rock swap/sale. The weather was mild (for late June anyway), plenty of shade trees around the cool stone pavilion, restrooms nearby, playground for the kids, and sit-down space for almost everyone inside.

The Show is coming up rapidly and there are many details which need to be attended to. Some of these tasks have members who have handled them before

and probably will again, but it doesn't pay to assume such - people sometimes just get tired and want a change. There are the tasks which need someone to be in charge - Main door tickets (lots of slots), Information desk, which includes a couple of folks to handle new and renewed memberships,, for whom we will have ballpoint pens with our HGMS logo to hand out to each new signee. Another person is needed to handle the silent auction. We need someone to manage the hourly door prize drawings. The most volunteers will be needed on Wednesday to mark off the floor for dealer spaces, and another crew on Thursday for helping get the entire building set up - assisting dealers, moving in the flume, competitive display cases, assembling the fluorescent room, managing the Thursday night Dealer Appreciation Supper, and a dozen other. A detailed signup list will be available at the July and later meetings.

Guidelines & Rules for Preparing Competitive Displays for the HGMS Fall Show

Division A – Open Division

Division B – Minerals

Division C – Lapidary

Division D - Jewelry and Art Metalcraft

Division E – Educational

Division F - Fossils

Division G – Petrified Wood

Division H - Scrimshaw

Division I - Beading and Beadwork

Division-J - Meteorites

Division UV - Fluorescent Minerals

The complete rules for competition in each of these divisions may be found at:

http://www.amfed.org/rules/AFMS_Rules_2018.pdf

Be warned, they are intimidating, mostly because of the jumbled page numbering. There are 99 pages, but once you select a Division, the rules for each are found in specific locations, with the Division Letter within the page number. If you can feel any sympathy for the Rules Committee in trying to keep the document current as changes are made each year, the pages are numbered according to when, and if, changes were actually made to that particular included content.

The first half of the document covers general information, and is required reading before skipping down to your chosen Division. Maybe someday an enthusiastic editor will go through the entire document and create hyperlinks to speed you to the desired section, but for now spend a bit of time looking through the various categories and get familiar with the layout. It isn't really as hard as it looks at first.

The competitive areas are so varied that you would almost have to work at running into dis-allowed multiple entries. So pick an area, study its rules, and start creating a winning exhibit.



Minutes for the HGMS Meeting 28 May 2019, 06:30pm

The minutes for April meeting were voted and approved.

It was stated at the beginning of the meeting that a cake of appreciation was presented for Brian Burgess for his work with HGMS and particularly the Pebble Pups. Brian is moving to Birmingham but will make the commute each month to continue to work with the Pebble Pups. Cake was on the hospitality table in the back of the room for people to enjoy at the end of the meeting. Unfortunately Brian couldn't attend the meeting, but the cake was delicious.

Metal Smithing presented their report followed by Rocket City Jewelers report and wrapping up was the Geo-Sciences report.

Bill then discussed the October Gem, Jewelry, and Mineral Show and in particular the Competitive Display Cases. Bill made sure the audience knew that even though the outside of the display cases may be scratched, and worn, this will not be part of the judging. However, Bill stressed that the inside of the case must be pristine. He also expounded on the criteria for competitive points. Judging will be categorized between novice and expert and whether a display will be either a group display or individual displays. Bill stated he would get more information for the Competitive Display as the event draws near.

Program for tonight was Show & Tell for last initials H through R. Presenters were Bob & Ruth Kemper, Lynn Peete, Hayley Nedbalski, John McCullough, Gene Powers, Judy Osmundson, Sachiye Littler and Brandon Schroeder. Everyone had a great assortment of stones and fossils and gave some great stories behind how they acquired them and why their show & tell pieces were special to them. Rocks, fossils, 3D impressions, and beautiful carved pieces of stone were passed around the audience and enjoyed by all.

Bill announced that "Rock Fest 29" at the Tellus Museum will be June 8th & 9th 2019 in Cartersville, Georgia. Gem, Mineral, Fossil, and Jewelry Dealers from across the country will be set up in the Tellus Banquet Room and outside on the back lawn. Tellus Museum is celebrating 29 years in their fabulous Museum and members were encouraged to attend.

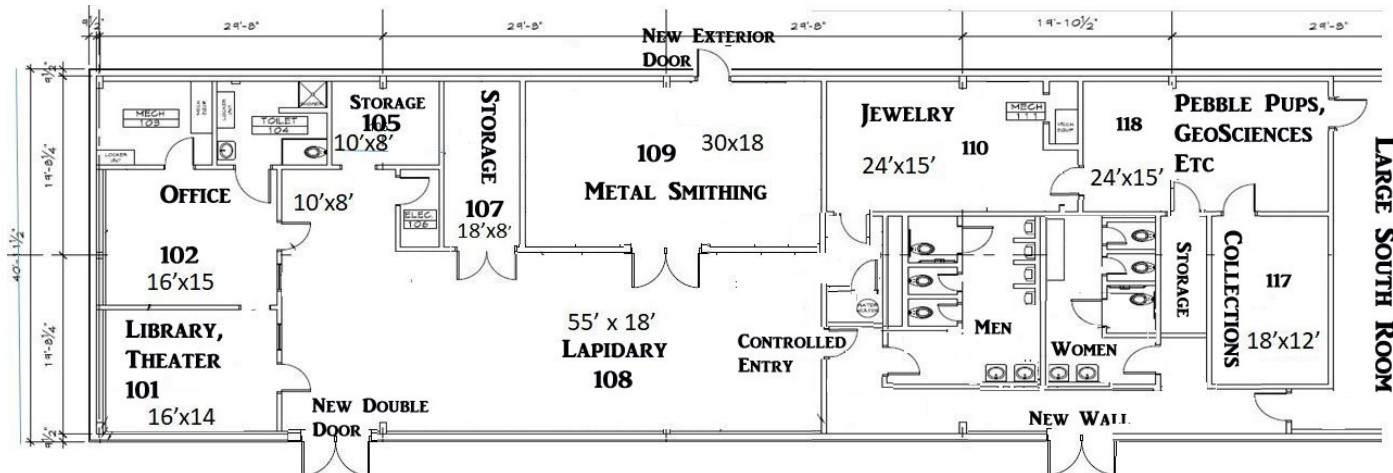
Bill then gave a slide presentation for the possible relocation of the lapidary, metalsmithing, and jewelry making and other HGMS activities to the Old Grissom High School Wrestling Building. Bill showed the proposed revised floor plan of the building and the location of each activity in the new building. This topic brought up the security concerns and access to the building as well as fire doors and placement of those doors. Bill also read the advantages and disadvantages of the move to the new building. After the presentation was completed, and all questions were asked and answered, Michael Cape asked for a motion on the floor to ask Do the HGMS members want the HGMS board to move forward and inform the city and the senior center that HGMS is interested in pursuing a move to the new location? Mike Soroczak seconded the motion, a vote was taken, and there was a unanimous approval to proceed forward with this effort.

Caryl Nixon stated that she needed volunteers to provide food/refreshment for the July 23rd HGMS monthly meeting. She also informed the audience that the HGMS Picnic and Rock Swap will be 29 June 2019 at Monto Santo State Park Pavilion. Meat will be provided by HGMS Hospitality and Caryl is asking everyone to bring a covered dish. There is no sign-up sheet for bringing in food, and everyone will bring in a covered dish to be shared by all. Since the June picnic will be 4 days after the proposed 25 June monthly meeting, it was agreed that HGMS will not have a monthly June meeting.

Meeting was adjourned at 8:13pm.

Update: Possible HGMS Activities move to the Old Grissom High Field House

Several of HGMS members met Huntsville City Representatives John Hamilton and Steve Ivey at the Senior Center this month so that they could see what the HGMS members do, where we do it, and how. Some members were working at the arbors and one had a saw going. They were given the floorplan layout below, showing how we would use the north end of the new building, and after many questions for clarification, they were satisfied with the answers. There are no major renovations needed, mostly doors were moved or added, and the entrance gets a new wall to form an inside hallway for accessing the men's and women's restrooms from either end of the building. John agreed that when they get through it will probably look a lot like this layout. It was suggested that he consider hiring small contractors to piecemeal the tasks – door & flooring installers, electricians, plumbers, painters, etc to keep the costs down and to speed up the project. He agreed. We will meet again soon to firm up details.



Huntsville's Newest Cave

Carl Craig brought to the June Picnic a couple of photos of Huntsville's newest cave – a sinkhole that formed in May in the road at the main Monte Sano Park east overlook, near our where we were partying. It took out half the street and a 20' section of the rock wall. It is still unstable so no attempt has been made to evaluate its depth or possibility of expanding. Go to see it at your own risk. That is Carl in the wheelchair at the top.

This road was once the road-bed for the Monte Sano Railroad that ran from the Huntsville Depot to the Monte Sano Hotel, in the 1880s. It was a popular attraction, carrying locals and dignitaries from as far away as New York City up to see the sights, eat some fine food, and sleep in luxury. After the rail line suffered a minor but scary derailment, it was closed in 1888, and the route was paved to become the Bankhead Parkway. This upper section was closed in 1974 after the huge floods that year caused more damage than was considered worth the money and effort to repair. Fortunately the sinkhole waited until after all the heavy traffic had ceased.

It is easy to forget that the limestone mountains around here are literally Swiss Cheese. There are over 4000 known caves in North Alabama alone, and over 17,000 in the Southeastern States. There are almost certainly many times that many which don't have exposed entrances. Known ones have numbers/names, and many of them have been mapped.

The Southeastern Cave Conservancy (<http://www.scci.org/>) maintains a log of them, controlling access to over 170 of them, and with six Preserves over six states. Sometimes they close more sensitive ones with iron barred gates, particularly those with colonies of bats. Some of the more interesting ones, even have guides available, for the mutual enjoyment and safety of the visitors and of the cave itself from the visitors.



Rocket City Jewelers (RCJ) News

By Leslie Malakowsky



On June 19th, we enjoyed making a sample and a bracelet using the European 4-in-1 chainmaille weave. Judy made ring stands that made it easier for us. On July 10th, we experimented with making netted bezels for cabochons. We're still learning this new (for us) wirework skill. Judy made awls that helped keep the loops consistent. I'm proud of the folks who learned how to make their own cabochons for this class! If you haven't tried it yet, don't worry, you'll get there! Thank you, Judy for the tools you made for these classes. Enjoy the summer everybody!

Upcoming Schedule:

July 17th – Half Persian 3-in-1 Spine. Kit cost is \$5.

July 24th and July 31st – Open and we'll revisit netted cabs on one of these nights.

Group Leader/Lead Instructor - Leslie Malakowsky

Instructors	Judy Osmundson, Myra Soroczak
Kit Manager	Sherrie Bonin
Treasurer	Clara Goode
Facebook	Karen VanBebber
Security	Joe Bonin



RCJ is open to every member of the HGMS. (Gentlemen, too!) **If you love making jewelry, please join us!** All skill levels are welcome!

Remember our core values: to share what we know, learn new skills, and have fun! Please let me know what you are able to teach and what you would like to learn.

We meet every Wednesday from 6-9p.m. in the Paint Room (next to the Lapidary Shop) at the Huntsville-Madison County Senior Center, 2200 Drake Avenue, Huntsville.

Important: Please park in the **North parking lot** and enter the building at the **entrance next to Meals on Wheels**. The door is locked after 6:30p, so if you need to arrive later, please text me and someone will let you in.



Metal Smithing/Silver Group by Kathy Bowman & Shelley Curran

Bezel Setting Class. July 18 2019

In this class you will learn to bezel set a cabochon. This is a basic stone setting method that has endless possibilities for jewelry and ornaments.

For those of you new to setting or not real confident yet, starting with an oval or round stone is best. (No corners or points!). You may bring your own stone or there will be appropriate stones available to purchase.

For those of you who have done this a few times and are comfortable setting regular shape stones we invite you to bring in something more challenging.

Kit Cost: \$4.00 (plus stone if applicable). We will be working in copper but silver will be available for purchase if you wish.



For The Less Experienced
(rounds & ovals -no points)



For the More Confident
(odd & irregular shapes)

The July Schedule will be as follows because of instructor classes and the July 4th holiday:

Thursday, July 18 – OPEN: PROJECT CLASS: SETTING A CABOCHON

The balance of the month of July will be our normal Monday and Thursday work session nights.

Findings Class August 1st

Findings are the jewelry making components that aren't beads, gemstones or stringing materials that are used to complete a finished piece of jewelry. Examples could include clasps, bales, jump rings, ear wires, pin mechanisms, bead caps and on and on.

Unfortunately a lot of times findings are more of an afterthought in the design process rather than an integral part of the finished piece. With some thought and planning your findings can be strong design elements or blend seamlessly into the finished piece.

In class we will make a toggle clasp, ear wires, and a bead cap. More if time allows. Kit will include materials and a handout with directions and drawings for many different kinds of findings. Cost is \$7.00 Please sign up in advance at the meeting or on Kathy's email. Class limited to ten.



Certification Classes: We plan to resume certifications on a one to three person basis during Monday night work sessions instead of having one large class a few times a year in late June. If you cannot attend on Monday nights we can make arrangements for Thursday night work sessions. If you are interested in scheduling Metalsmithing Certification please send your name and contact information (name, email address, and phone number) to HGMS@wilddivystudio.com. We will contact you and set up a day for you to come. Those who sign up will be notified when the next class will be scheduled.

Volunteer Positions *

Class Instructors:

Toolbox Sign-outs

Inventory Manager

Store Manager

Kit Manager

Webpage & Social Media Management

Kathy Bowman

Shelley Curran

CG Lester

Opening

Opening

Shelley Curran

Kathy Bowman

*Note: We are all volunteers so the schedule is subject to change.

Pebble Pups

Madison County Senior Center Cafeteria
2200 Drake Ave, Huntsville AL
Brian Burgess 256-479-2993
bburgess771@gmail.com



Upcoming meeting - We are taking the summer off, so the next meeting will be August 27th - program to be determined, but it will be good stuff.

Mr. Brian has moved to Birmingham this month, but we are happy to know that he will return to Huntsville each month for the Pebble Pups meetings.

Brian has begun to update the Pup website calendar. As he gets confirmation on field trips, guest speakers, and club events I will add them to the calendar. The trip to the **Steven Minkin Track Site** unfortunately had to be postponed when our APS host had an emergency arise. It will be rescheduled later.

Cane Creek Canyon Hike - Jun 1st

Jim & Faye Lacefield met us on arrival and welcomed everyone. Already present was a crowd of 50 folks, mostly from the Quad Cities area, with lots of kids. On hand from the HGMS Pebble Pups were Eric Ellison + his two & John McCullough + his son. The Lacefields gave an overview of what we could expect to find. With Bill Friday leading, we all started out together to the overlook and down the steep trail to West Cane Creek, mostly arriving at the creek at the same time. Afterward folks scattered out on their own, enjoying the cool streambed. The weather was warm but pleasant, the creek was well populated with agates, a salamander, crawdad, and a small water snake. And a good time was had by all.

Cedar Creek fossils, near Red Bay AL—date yet to be settled

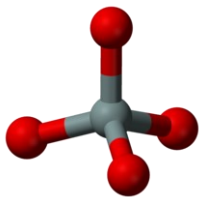
New members are always welcome. Bring your friends.

Enter the north door of the Senior Center, 2200 Drake Ave. and straight ahead to the cafeteria.

If anyone has any questions, please contact Brian 256-479-2993 or Bill Friday 256-527-8227,

bill.friday@earthlink.net

GeoSciences Activity Group - Meets (most) Second Thursdays



For the July 11th meeting, Michael Cape presented the complex world of silicate based crystals. Silicates are the most common minerals on earth and exhibit a vast array of variations. We are very familiar with the quartzes but those are just the start of the list - micas, clays, olivines, tourmalines, and many more. There were 21 members present, with many questions, and answers. All HGMS members are welcome to attend any sessions.



Upcoming Program for August 15 (**Third Thursday, not Second**) will be a discussion of the Steven Minkin Fossil Tracksite at the Union Chapel Coal Mine, near Jasper AL. This mine was spared reclamation by the State Legislature to allow the public to wander through the rubble popping open rocks in search of the elusive lizard tracks, fern leaves, brachiopod shells, and ancient tree trunks.

In September Gene Powers will present South Alabama Concretions, odd formations of iron ore often containing powdered iron oxide crystals. Discussion will cover their formation, use by ancient Indians for facial & pottery decoration, plus how and where to find them.



Mineral of the Month – Chrysoberyl *By Leslie A. Malakowsky*

In July, we celebrate Independence Day. In honor of the Fourth, I chose to feature chrysoberyl because of the unique star shape that it can have!

Chrysoberyl is an aluminum beryllium oxide with the formula BeAl_2O_4 . It's a member of the oxide group of minerals in which the oxide anion (O^{2-}) is bound to one or more metal ions. Some of the more common minerals in this group include cassiterite (tin oxide), corundum (aluminum oxide), cuprite (copper oxide), and hematite (iron oxide).

Chrysoberyl is hard, tough and durable being the third-hardest natural gemstone. It's 8.5 on Mohs scale of hardness between topaz (8) and corundum (9). Ordinary chrysoberyl is yellow or yellowish green, although it can be red, green, yellow, orange, brown, pink, gray, black, or multicolored, and transparent to translucent. Chrysoberyl that exhibits a good pale green to yellow color and is transparent is considered gemstone quality, although it lacks the fire of other gemstones. Gemstones that may resemble chrysoberyl include topaz, heliodor, peridot, yellow sapphire, citrine, and zircon, but chrysoberyl can be distinguished from them by its greater hardness.

The name chrysoberyl is derived from the Greek words χρυσός (chrysos) and βήρυλλος (beryllos), meaning "a gold-white spar". Interestingly, yellow-green chrysoberyl was referred to as "chrysolite" in the Victorian and Edwardian eras which caused confusion because that name is also used for the mineral olivine (the gemstone peridot). Consequently, that name is no longer used in contemporary gemological nomenclature.

By the way, despite their similar names, there's no relationship between chrysoberyl and the mineral beryl except that they both contain beryllium. (Beryl is an aluminum beryllium cyclosilicate, a member of the silicate family of minerals.)

Chrysoberyl is usually found in pegmatites (igneous rocks, formed underground, with interlocking crystals usually larger than 1 inch, and pushed up as dikes or veins through large masses of igneous rocks). The mineral occurs as prominently striated tabular crystals or short prisms. The unique star shape happens when the crystals grow as *cyclic twins* (two separate crystals that share some of the same lattice points in a symmetrical manner) called *trillings*. These twinned crystals have an hexagonal (6-sided or pointed) appearance, hence the star shape. But they are the result of a *triplet* of twins in which each twin is oriented at 120° to its neighbors. When only two of the three possible twin orientations are present, the result is a "V"-shaped twin.

There are two main varieties of chrysoberyl: cymophane (popularly known as "cat's eye") and alexandrite. Cat's eye has a pleasing chatoyancy (an optical reflectance effect due to the mineral's fibrous structure) that's reminiscent of a cat's eye. The finest quality cat's eye is formed into a cabochon that displays a narrow band of concentrated light across the width of the cab. Other minerals that can be chatoyant include quartz, beryl, tiger's eye, charoite, labradorite, selenite, and moonstone.

In the gem trade, the term "cat's eye" can be used as an adjective, for example, "cat's eye beryl", but only chrysoberyl can be referred to solely as "cat's eye". Up until the end of the 19th century, cat's eye was mostly found in gem and mineral collections. But it soared into popularity as a jewelry gemstone in 1879, when Prince Arthur, Queen Victoria and Prince Albert's 3rd son, gave Princess Margaret of Prussia a cat's eye engagement ring. The ring shown here is an example of an antique cat's eye engagement ring.

Alexandrite, one of the contemporary June birthstones, is a rare and expensive variety of chrysoberyl that exhibits a color change (the "alexandrite effect") in natural (daylight) and artificial (tungsten/halogen) light. In daylight, fine-quality alexandrite is green or bluish-green. In artificial light, it changes to red, purplish-red, or purple. This is because human vision is most sensitive to green light and least sensitive to red light, and because artificial light emits less green and blue than daylight where the full spectrum of visible light is present. Alexandrite is also strongly *pleochroic*, an optical phenomenon in which a mineral displays different colors when observed at different angles through polarized light.

Chrysoberyl is popular with collectors as a shelf specimen, and the gemstone varieties are cut and faceted or formed into cabochons for jewelry. The most significant deposits of the mineral are in Brazil, Australia, Madagascar, Zimbabwe, Myanmar, and Russia. Cat's eye comes from Brazil, India, China, Sri Lanka, and Zimbabwe, and Alexandrite comes from Brazil, Russia, Madagascar, Sri Lanka and Tanzania.

References: wikipedia.org, minerals.net, thoughtco.com



Brad's Bench Tips

"Bench Tips for Jewelry Making" and "Broom Casting for Creative Jewelry" are available on Amazon www.BradSmithJewelry.com. For those who enjoy these bench tips, I'm happy to announce a second volume is now available on Amazon. "More Bench Tips" includes 86 additional ways to save time, avoid frustration or improve quality at the bench. These new tips cover problems in fabrication, stone setting, casting, soldering and polishing. Browse through a couple of the new ones at <https://amazon.com/dp/B07D4B45JJ/>.

These are just a few of the many tips in the new book, "More Bench Tips for



NEW MELTING DISH

A new melting dish or crucible must be given a protective coating of borax before its first use. Borax extends the life of the ceramic material. Once done, it generally does not have to be repeated.

The procedure is straightforward. Heat the new melting dish to red with a large torch. You'll need plenty of heat. I use an acetylene/air Prest-O-Lite torch with a large #5 nozzle.

When the dish is hot, sprinkle in a half teaspoon of borax, let it melt, and spread it with a carbon rod over all of the interior surface of the dish. Add more borax if needed.

Sometimes you will have to hold the dish at an angle to coat the sides up to the rim. And don't forget to coat the pouring spout itself.



RING SIZE VARIATIONS

The numerical sizes marked on ring gauges and ring mandrels are often not the same across different manufacturers. If you're using a ring gauge to measure a customer, be sure to compare the markings on the gauge with the markings on the mandrel you use to make the ring. They may not be the same.



Dixie Mineral Council Field Trips

The Southeast Federation of Mineralogical Societies, Inc



The Friendly Federation - Founded in 1976 to serve
DMC Program of the SFMS Field Trip Committee
Copyright © All rights reserved.

These will no longer be posted in the email newsletter or on our website, since we have those open for the general public to see. The Dixie Mineral Council has to restrict access to field trip information to keep the attendance among only paid members of Gem & Mineral Societies that are part of the DMC umbrella and which have adequate insurance for their members. You will get the DMC announcements separately by email.

July Birthdays

2 Katie Beth Allen	13 Jerry McDaniel
6 Isaac Burgess	19 Stacy Walbridge
6 Ken McCormick	18 Abigail Inman
7 Tom Detwiler	21 John Lindberg
9 Liz Cooper	25 C.G. Lester
10 Sarah Jennings	26 Fritz Detwiler
12 Lucy Allen	26 Clara Goode
12 Kathryn McCullough	27 Angela Kowalczyk
13 Linda Aycock	30 Bruce Kowalczyk

Anniversaries

3 Jim & Bonnie Treadway
 13 Linda Aycock
 13 Jerry & Cynthia McDaniel
 26 Elroy Walker
 28 Steve & Sheila Tesh
 29 Mike & Ardie Mannay
 31 Toni Robert



July
Ruby

August Birthdays

2 Lawrence Nelms	22 Carlee Patterson
4 Brooks Glover	22 Steven Priest
6 Devona Hawkins	24 Karen Allen
10 Jackson Herman	24 Joseph Mastromonico
10 Peggy Johnson	25 Debora Neis
14 Kate Leonard	27 Carol J. Lee
18 Will Bryan	28 Evan O'Dell
18 Karen Ryan	30 Tish Hall
19 Jimi Sitko	31 Lauren McCullough

Anniversaries

1 Clara & Mike Goode
 3 Brian & Karen Allen
 4 Florence Mims
 9 Lowell & Betty Zoller
 18 Julia & Steven Priest
 25 Jim & Ola Ann Lee
 26 Chris & June Kalange
 28 Anita Bynum
 31 Becky Rollston



August
Peridot

July 2019 - Senior Center Lapidary Lab Schedule

To use lapidary equipment, you must be certified unless a licensed instructor is present currently: Bill Friday, Joe Bonin, & Michael Cape

Monday	7:30am-4:30am	Open Lab: Lapidary - certified Seniors & HGMS age 60+
	6:00pm-9:00pm	Open Metal Smithing - Only certified HGMS 18+
Tuesday	7:30am-9:00am	Open Lab: Lapidary - certified Seniors & HGMS 60+
	9:00am—Noon	Silver Jewelry - Ron West, Instructor - Seniors & HGMS 60+
	Noon -3:00 pm	Silver Jewelry - Terry Clarke, Instructor - Seniors & HGMS 60+
	3:00pm-4:30 pm	Open Lab: Lapidary - certified Seniors & HGMS 60+
	6:00pm-9:00pm	Open Lapidary - Only certified HGMS 18+
Wednesday	7:30am-4:30 pm	Open Lab: Lapidary - certified Seniors & HGMS 60+
	6:00pm-9:00pm	Open Lapidary - Only certified HGMS 18+
	6:00pm-9:00pm	Open Jewelry - Only certified HGMS
Thursday	7:30am-9:00am	Open Lab: Lapidary - certified Seniors & HGMS 60+
	9:00am-11:30am	Silver Jewelry - Ron West, Instructor - Seniors & HGMS 60+
	Noon-3:00pm	Wood Carving - Copeland, Instructor - Seniors & HGMS 60+
	3:00pm-4:30 pm	Open Lab: Lapidary -certified Seniors & HGMS 60+
	5:30pm-9:00pm	Metal Smithing & Jewelry Classes— Only certified HGMS 18+
Friday	7:30am-12:00am	Open Lab: Lapidary - certified Seniors & HGMS 60+

2019 HUNTSVILLE GEM & MINERAL SOCIETY OFFICERS

President—Bill Friday—256-527-8227—bill.friday@earthlink.net

Vice President— Michael Cape— macape@knology.net

Recording Secretary: Ruth Kemper— bob_kemper@yahoo.com

Treasurer: Clara Goode, 256-883-9194—clarag1964@gmail.com

Newsletter Editor: Bill Friday - 256-527-8227—bill.friday@earthlink.net

Directors at Large: Steve Young —taegu_steve@hotmail.com

Gene Powers—genepowersgddm@gmail.com

Michael Soroczak —Soroczak@yahoo.com

Ex Officio - Brian Burgess— bburgess771@gmail.com

Federation Liaison - Les Bartel - 131 Oakland Trace, Madison AL 35758 lester.bartel@gmail.com

2019 COMMITTEE CHAIRS

Membership: Bill Friday— 256-527-8227

bill.friday@earthlink.net

2508 Excalibur Dr. Huntsville AL 35803

Publicity: Bob Kemper

bob_kemper@yahoo.com

Webpage: Leslie Malakowsky,

lmalakowsky@gmail.com

Auction Chair: Shelley Curran

curranshelley1@gmail.com

Field Trips: Brian Burgess, 256-479-2993

bburgess771@gmail.com

Hospitality: Caryl Nixon 256-426-5061

caryl.nixon@outlook.com

Mineral ID: Michael Soroczak

soroczak@yahoo.com

(William Holland offers a class for this)

Property: Chris Kalange,

ckalange@comcast.net

Program Chair—Mike Harrison -

wm.harrison.123@gmail.com

Show Chair: Tony Smith, 256-603-3095.

tsmith@erc-incorporated.com

Show Vendor Chair: Lowell Zoller, 256-534-8803

Lzol@comcast.net

Show Volunteer Chair: Open

Show Publicity Chair - Tony Smith

tsmith@erc-incorporated.com

Show Treasurer: Clara Goode, 256-883-9194

clarag1964@gmail.com

PURPOSE OF THE SOCIETY: The Huntsville Gem & Mineral Society is a non-profit educational organization for people interested in mineralogy, geology, paleontology, and related lapidary arts. Its primary purpose is the education of the members and the general public in these areas. This purpose is accomplished through programs, shows, lectures to school children and organizations, and exchange of rocks, minerals, artifacts, and newsletters.

DUES: Annual dues are \$15.00 per person, \$20.00 per family, and are due on January 1st of each year

Membership Applications may be found at our webpage www.Huntsvillegms.org, at meetings, or the lab

MEETING PLACE: Huntsville/Madison County Senior Center, 2200 Drake Ave, Huntsville, AL at 6:30pm.

DATE: Fourth Tuesday of each month except for April Auction, June picnic, Christmas Dinner and major holidays.

Federation Liaison: Huntsville Gem & Mineral Society, 131 Oakland Trace, Madison AL 35758

Attn: Les Bartel

**The Society is affiliated with the American Federation of Mineralogical Societies ,
the Southeast Federation of Mineralogical Societies, and the Dixie Mineral Council**

Federation Newsletters:

SFMS: www.amfed.org/sfms/lodestar_newsletter.html

AFMS: www.amfed.org/news/default.htm

DMC: http://www.amfed.org/sfms/_dmc/dmc.htm



2019-20 CALENDAR

- 23 Jul '19 Regular HG&MS Meeting, Madison County Senior Center,
2200 Drake Ave, Huntsville, AL 6:30pm
- 27 Aug '19 Regular HG&MS Meeting, Madison County Senior Center,
2200 Drake Ave, Huntsville, AL 6:30pm
- 24 Sep '19 - Regular HG&MS Meeting, Madison County Senior Center,
2200 Drake Ave, Huntsville, AL 6:30pm
- 11-13 Oct '19 HGMS Fall Show, Jaycees Bldg, 2180 Airport Rd, Huntsville AL
- 22 Oct '19 - Regular HG&MS Meeting, Madison County Senior Center,
2200 Drake Ave, Huntsville, AL 6:30pm
- 26 Nov '19 - Regular HG&MS Meeting, Madison County Senior Center,
2200 Drake Ave, Huntsville, AL 6:30pm
- 10 Dec '19 - Annual HG&MS Christmas Dinner
Date, Time, and Place to be determined
- 28 Jan '20 Regular HG&MS Meeting, Madison County Senior Center,
2200 Drake Ave, Huntsville, AL 6:30pm
- 25 Feb '20 Regular HG&MS Meeting, Madison County Senior Center,
2200 Drake Ave, Huntsville, AL 6:30pm
- 24 Mar '20 Regular HG&MS Meeting, Madison County Senior Center,
2200 Drake Ave, Huntsville, AL 6:30pm



Deadline for Next Newsletter— August 17, 2019

Dated material
Do not delay

Rocket City Rocks & Gems
Bill Friday, Editor
2508 Excaltibur Dr.
Huntsville, AL 35803
HGMS July 2019