

# ROCKET CITY ROCKS & GEMS



*The Monthly News Bulletin of the Huntsville Gem & Mineral Society*

Volume 51 No. 4

*"We'll go to the Moon for a Rock"*

April 2019

## INSIDE THIS ISSUE

President's Note .....	2
Fall Show Competitive Displays .....	2
Metalsmithing Corner.....	3
Rocket City Jewelers .....	4
DMC Change in Promotion .....	4
Pebble Pups .....	5
Fossil/Geology Group Report .....	5
Brad's Bench Tips .....	6
Feature Article.....	7
April/May Birthdays	
& Anniversaries.....	8
Lapidary Lab Schedule .....	8
2019 Officers & Committees.....	9
Calendar.....	10

## MOUNT ST. HELENS, OREGON

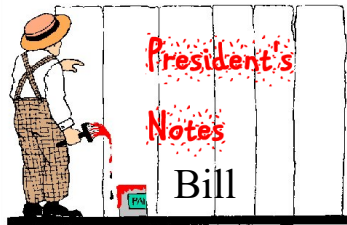
**Presentation on the history, recent eruption, and current status - by Mike Harrison.**



[www.huntsvillegms.org/](http://www.huntsvillegms.org/) - [www.facebook.com/HuntsvilleGMS](https://www.facebook.com/HuntsvilleGMS) -



Huntsville Gem & Mineral Society (HGMS) 2019. Reprinting Rights are granted for all material (except for minutes of the meeting and copyrighted articles) to any organization officially affiliated with the American Federation of Mineralogical Societies (AFMS) or Southeastern Federation of Mineralogical Societies (SFMS), provided credit is given to the author, the original publication, and this newsletter



***PURPOSE OF THE SOCIETY:** The Huntsville Gem & Mineral Society is a non-profit educational organization for people interested in mineralogy, geology, paleontology, and related lapidary arts. Its primary purpose is the education of the members and the general public in these areas. This purpose is accomplished through programs, shows, lectures to school children and organizations, and exchange of rocks, minerals, artifacts, and newsletters.*

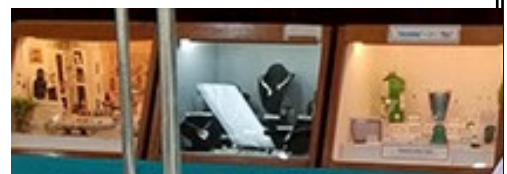
This paragraph is included in the boilerplate on the next-to-the-last page of every newsletter issue, which means that few members ever read it. But it really is why we are in existence. We strive to make the organization interesting and useful for our members, but we also reach outside the membership to do the same things. It may sound like a ploy to gain new members but at the heart, it isn't just that, but rather to just inform anyone who has a curiosity about our hobby of the wonders hidden in rocks, the mysteries hidden in fossils, and the unfolding of our world's history written in those hidden features. And they may join us to gain more insight, and have fun.

So how have we been doing toward that goal? Brian Burgess and I, with help from several other members, have been taking rocks and fossils to Schools and other venues for several years now, and the pace is picking up. We will be back in Gadsden at the Eura Brown Elementary School for the third year, where our experience with the format contributed to a huge improvement of how it operates. We attended an Arts Council sponsored event at the Space & Rocket Center, and the Madison Street Festival last year. Presentations have been given to the Optimists and Civitans, Geology Merit Badge assistance for Boy Scouts, and field trips for individuals and groups to the Devil's Racetrack.

All faithful to our Stated Purpose, but starting next month Brian will become mostly unavailable when he moves to Birmingham. He will still be the principal leader of the Pebble Pups but other venues will have to be picked up by new helpers. So this is a plea - sign up to participate in these Outreach activities. I'll be cajoling more earnestly at meetings and in this column, and planning to get positive responses. It isn't hard to do, usually just stand at our station and explain what are the items on the table, why they are special, and how to learn even more about them. The importance of why this is needed was brought home to me last week at the Mountain Gap School STEAM event. Feedback emphatically assured that the Rocks & Fossils table was the absolute best of show! I take less pride in having been the presenter than I do in worrying that Science & Engineering promotion is being watered down to straws stuck together with marshmallows as illustrating something practical. We can do better than that. Join me in visiting the schools and giving the students some REAL science and engineering. When I come calling, please take advantage of this opportunity to help spread our message, and maybe get some new members who will contribute their new skills and knowledge to the rest of us. Thanks.

## Would you like to win prizes for displaying your most valuable treasures?

Richard Hoover has offered to provide guidance in preparing competitive display cases for our Fall Show. With the Southeast Federation of Mineralogical Societies coming here for their Fall Meeting, we will have among us some of the best judges available from the Southeast Federation to select the winners. Those displays will become eligible for further prizes at the Southeast Federation level. We will be improving our display cases for this purpose. Mike Harrison has taken on this project and the results should be inspiring. There may be entries from other area Gem & Mineral Societies entering at our Show, but most will be from our own membership. Besides the case entries, there will be a single-piece category, for which the standards will be extra



## Bring back your Fall Show yard signs

**These signs are expensive and if they aren't returned, new ones will have to be made. Please check the corners of your garage to see if any from past years are lurking in dark corners or closets.**

**Thanks, Tony Smith**

## Metal Smithing/Silver Group

by Kathy Bowman & Shelley Curran

### Next Project Class, Thursday, May 2: Anticlastic Bangle Bracelets

This month's project is making an Anticlastic Bangle Bracelet. The term "anticlastic" refers to the curves of the metal form, which are opposites. Think of a saddle on a horse's back. The saddle seat curves in a U shape to fit the rider while the saddle itself curves the opposite direction around the body of the horse.

Normally this form is made using hammers and stakes however Shelley has purchased a tool to make the form with no hammering. You will be able to choose which one of several different "styles" for your bracelet: a "Spinner" bracelet with a captured ring, a plain form with soldered decorations and a colored patina or alcohol ink, and one that is partially closed with captured beads. The kit cost is \$5. If you choose to make the style with the captured beads you will need to supply your own 4 to 5 mm beads, which will not be part of the kit.

*The sign up sheet will be available at the April meeting and on Monday and Thursday night classes or by sending email to [HGMS@wildivystudio.com](mailto:HGMS@wildivystudio.com).*



NOTICE: METALSMITHING WILL NOT BE MEETING MAY 9<sup>TH</sup> THROUGH MAY 16<sup>TH</sup>. WORK SESSIONS/ CLASSES WILL RESUME MONDAY, MAY 20<sup>TH</sup>.

As always, on nights that we do not have an official project class scheduled anyone who is certified is invited to join us to work on your projects. Instructors are available for "one on one" instruction and help on individual projects on work session nights. Anyone who missed a particular project we have had in the past and would like to work on that project. Please notify Shelly or me and we will provide you with the kit and instructions any special tools so you can work on it during our work session nights. **Please let us know in advance if the project you want to work requires special tools or equipment we bring from home so we can be sure to have them available.**

**Certification Classes:** We plan to resume certifications on a one to three person basis during Monday night work sessions instead of having one large class a few times a year in late May. If you cannot attend on Monday nights we can make arrangements for Thursday night work sessions. If you are interested in scheduling Metalsmithing Certification please send your name and contact information (name, email address, and phone number) to [HGMS@wildivystudio.com](mailto:HGMS@wildivystudio.com). We will contact you and set up a day for you to come. Those who sign up will be notified when the next class will be scheduled.

### Volunteer Positions \*

Class Instructors:

Kathy Bowman

Shelley Curran

Toolbox Sign-outs

CG Lester

Inventory Manager

**Opening**

Store Manager

**Opening**

Kit Manager

Shelley Curran

Webpage & Social Media Management

Kathy Bowman

\*Note: We are all volunteers so the schedule is subject to change.

## Rocket City Jewelers (RCJ) News *By Leslie A. Malakowsky*



On March 20<sup>th</sup>, we made a bracelet using leopard jasper beads and copper washers. This project was an interesting use of a non-traditional jewelry making item. We discovered how to augment the original design by texturing the copper washers (thanks, Sherrie). On April 3<sup>rd</sup>, we made a bracelet using the Celtic Visions chainmaille weave and variations, and we added a segment of that weave to our samples collection.

On **Saturday, April 27<sup>th</sup>**, we are taking a **group trip to Mary's Beads and Gems** followed by dinner at a local restaurant. Mary's is a vintage store packed with antiques, beads, crystals and other goodies. The address is 505 Pratt Avenue NE, Huntsville, 35801, near the intersection of Pratt Avenue and Andrew Jackson. Her phone number is 256-658-4972. Her web address is <http://marysbeadsandgems.com/>. The hours are Monday – Saturday, 10a.m. – 4p.m. **We'll meet there at 2:00p.m., shop 'til we drop, then decide where to dine.**

Now taking reservations for the **Stone and Braided Leather bracelet** class on May 1<sup>st</sup>. I'll have a sample at the April 23<sup>rd</sup> HGMS meeting. The kit cost is TBD. The deadline to RSVP is **Wednesday, April 24<sup>th</sup>**. To RSVP, contact me or send email to [hsvgems@gmail.com](mailto:hsvgems@gmail.com).

### Upcoming Schedule:

April 17<sup>th</sup> – Chainmaille sample(s)

April 24<sup>th</sup> – Open. Deadline to RSVP for May 1<sup>st</sup> class.

Apr 27<sup>th</sup> – Trip to Mary's

May 1<sup>st</sup> – Stone and Braided Leather bracelet

May 8<sup>th</sup> – Open

May 15<sup>th</sup> – Chainmaille sample(s)

Lead Instructor/Group Leader - Leslie Malakowsky

Instructors Judy Osmundson, Myra Soroczak

Kit Manager Sherrie Bonin

Treasurer Clara Goode

Facebook Karen VanBebber

Security Joe Bonin

**Remember our core values: to share what we know, learn new skills, and have fun!** Please let me know what you are able to teach and what you would like to learn.

We want to **wish Chris the best of health and thank Joe** for providing security while Chris is recovering.

RCJ is open to every member of the HGMS. (Gentlemen, too!) **If you love making jewelry, please visit us!**

All skill levels are welcome! We meet every Wednesday from 6-9p.m. in the Paint Room (next to the Lapidary Shop) at the Huntsville-Madison County Senior Center, 2200 Drake Avenue, Huntsville.

**Important:** Please park in the **North parking lot** and enter the building at the **entrance next to Meals On Wheels**. The door is locked after 6:30p, so if you need to arrive later, please text me and someone will let you in.



## Dixie Mineral Council Field Trips

The Southeast Federation of Mineralogical Societies, Inc



The Friendly Federation - Founded in 1976 to serve

DMC Program of the SFMS Field Trip Committee

Copyright © All rights reserved.

These will no longer be included in the email newsletter, since we also have them open for non-members to download from our website. Dixie Mineral Council has to restrict access to field trip information to keep the attendance among only paid members of Gem & Mineral Societies that are part of the DMC umbrella and which have adequate insurance for their members. You will get the DMC announcements separately by email.

# Pebble Pups

**Madison County Senior Center Cafeteria**  
**2200 Drake Ave, Huntsville AL**  
**Brian Burgess 256-479-2993**  
[bburgess771@gmail.com](mailto:bburgess771@gmail.com)



**Upcoming meeting - April 25, 6:00 in the Senior Center Cafeteria**

This will be the Third of three meetings to solve a mystery. You will continue to work on your chosen stones, applying the final three tests, after which you should be able to state what your mineral is (if you have done all of the steps correctly). This one will include effervescence (bubbling in weak acid). You will still work in groups of 2 or 3. Those that have been around and still can find their books, bring them. Remember safety when completing the tests on the minerals.

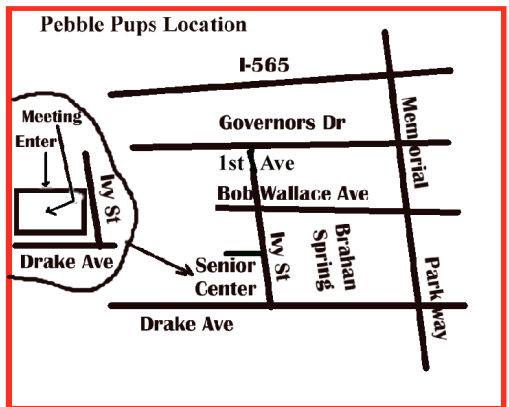
I have begun to update the Pup website calendar. As I get confirmation on field trips, guest speakers, and club events I will add them to the calendar. The trip to the **Steven Minkin Footprint site is this weekend, Saturday Apr 20**. Meet at the Jasper Jacks nearest the intersection of Hwy 69 and old Hwy 78. **Cane Creek Canyon is set for Jun 1**. I still need input for Hogg Mine on who wants to venture there and also for the shark tooth hunting to South Alabama. I will update the Field Trip Info section on the website with polls for you to decide where and when we go. I will leave the Field Trip Information up on this section for those that are new to the Pups. I will add the date for the field trips once they have been decided.

**Cedar Creek fossils, near Red Bay AL—date yet to be settled**

**New members are always welcome. Bring your friends.**

**Enter the north door of the Senior Center, 2200 Drake Ave. and straight ahead to the cafeteria.**

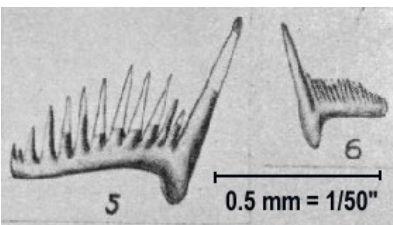
**If anyone has any questions, please contact Brian 256-479-2993 or Bill Friday 256-527-8227, [bill.friday@earthlink.net](mailto:bill.friday@earthlink.net)**



## SCIENCES [Geology & Fossil & Indian Artifact] ACTIVITY

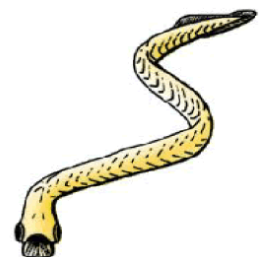
Notice our new name - much easier to reference than our former 6-word name.

We had a great field trip last Saturday to the Vulcan Stringfield Rd. Quarry in north Huntsville. Ten of us rode top to bottom in a big van, stopping to take in the enormity of the place, to learn where all of that rock is being used, pick up fossils and crystals, and watch a large drill on the top bench boring holes for a series of explosives - two layers each 4' thick, 40' deep, and 100' wide - which was detonated yesterday, and by today has all been moved to the crushers. The weather was wonderfully cool, a bit damp and a bit muddy, but a good time was had by all. See our web page for photos under Member News.



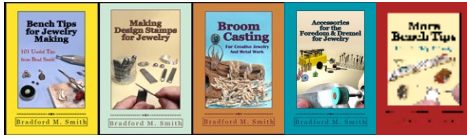
The next meeting will be Second Thursday May 9th, 6:30. The program will describe Conodonts - a curious very early fossil creature, dating to Pre-Cambrian times.

It was known until recently only by its tiny teeth, since the mostly boneless body seldom fossilized, and so could not be associated with any other animal group. Recently a fossilized body was found preserved in fine silt, and its identity is now known to be a jawless & boneless fish, around 1" long, and determined to be the oldest fish and earliest possessing a notacord ever discovered, so far.



## Brad's Bench Tips

"Bench Tips for Jewelry Making" and "Broom Casting for Creative Jewelry" are available on Amazon [www.BradSmithJewelry.com](http://www.BradSmithJewelry.com). For those who enjoy these bench tips, I'm happy to announce a second volume is now available on Amazon. "More Bench Tips" includes 86



additional ways to save time, avoid frustration or improve quality at the bench. These new tips cover problems in fabrication, stone setting, casting, soldering and polishing. Browse through a couple of the new ones

at <https://amazon.com/dp/B07D4B45JJ/>. These are just a few of the many tips in the new book, "More Bench Tips for Jewelry Making". See a sample chapter at <https://amzn.to/2KCyg4>



## BURNISHING BEZELS

A dapping ball can sometimes be used to burnish a bezel. I noticed this when setting some 10 mm cabs on a piece of filigree. It was difficult to get enough pressure with a pusher or a regular burnisher, so I tried a dapping ball and found it much easier. Make sure the ball is well polished (hit it with the Zam wheel) and let it ride along the base of your piece. Select a ball big enough so its curvature hits the top of the bezel at the best angle to burnish it down onto the stone.



## SUPER PICKLE

We've all made the mistake of putting some steel in the pickle pot. This can cause all your pieces to be coated with copper. Easiest way I've found to clean it off is to fill half a coffee cup with new hot pickle and put in an ounce or two of hydrogen peroxide from the drug store. Throw your pieces in and the coating is gone in about 10 minutes. When finished, pour the solution back into your pickle pot.

Many people think that when some steel gets into the pickle, the solution is contaminated and should be thrown away. Not true as long as you can remove all the steel from the pickle. In fact, the pickle should work even better after the steel is removed. Pickle works by dissolving the copper oxides that form during soldering. Pickle gets "old" when it cannot hold any more dissolved copper. Putting steel in the pot forces some of the copper to come out of solution, meaning the pickle is then able to dissolve more copper.

## Avoiding Buffer Mess

Buffing is one of the dirtier operations in jewelry making. If you work inside your home, buffer mess from lint and polish can be a problem. One solution is to buy a dust-collecting system, but they can be large and expensive. I have a practical—and, I think, a more economical—approach. I use the the 3-M Radial Bristle Disc system, specifically the 2-inch or 3-inch-diameter, 6-ply wheels. The blue disc (400 grit) does a nice job at prepolishing, the peach (6 micron) begins the polishing, and the lightgreen (1 micron) finishes it well. You'll like the way these discs reduce the amount of dust and lint caused by buffing, and a side benefit is that you don't have to wash off any waxy grime between grit levels. Wheels can be mounted on a regular buffer or on an old motor from a yard sale using a tapered spindle adaptor. They can also be used in a Foredom with a 1/4-inch shaft mandrel that matches the 1/4-inch hole size in the brushes.



## Mineral of the Month – Thundereggs *By Leslie A. Malakowsky*

This time of year, people all over the world traditionally celebrate Easter by decorating chicken eggs. Easter eggs have come to symbolize Spring, new life, and rebirth. This Easter custom started among the early Christians of Mesopotamia, who stained eggs with red coloring "in memory of the blood of Christ, shed at His crucifixion". The Christian Church officially adopted the custom about 1610.



A Northwest Coast styled Kwakwaka'wakw totem pole depicting a thunderbird.

Lent is a solemn religious observance in the Christian liturgical calendar that begins on Ash Wednesday and ends approximately six weeks later, before Easter Sunday. During Lent, many Christians commit to giving up meat (including chicken and chicken eggs). But chickens don't stop laying eggs during Lent! To avoid waste, people started boiling surplus eggs to preserve them and dyeing them for gifts and household decorations.

Thundereggs (or thunder eggs) are so called because their contents are sealed, like the contents of chicken eggs. But thundereggs, unlike Easter eggs, were not named for chickens. In certain North American indigenous peoples' history and culture, thunderbirds are

legendary creatures considered supernatural beings of power and strength. Native American legend considers thundereggs to be the eggs of the thunderbirds that once occupied Mount Hood and Mount Jefferson. (Both of these volcanoes are part of the Cascade Volcanic Arc in the Cascade Range of the Northwest United States.) According to legend, Thunder Spirits on these mountains hurled the "eggs" at each other during thunderstorms.

A thunderegg is not a mineral; it's a nodule-like rock filled with one or more minerals similar to a filled geode. Thundereggs usually contain centers of chalcedony which may be fractured and the fractures filled with agate, jasper and/or opal. Various other mineral growths and inclusions such as quartz and gypsum are frequently present. Thundereggs occur within flows of rhyolitic (igneous volcanic rock rich in elements that form feldspar and quartz) lava during volcanic eruptions. They form in gas pockets in the lava. The pockets act as molds. Water percolates through the porous rock carrying silica in solution. The darker silica lines and starts filling the cavity. Then lighter colored silica forms an inner core. The various colors come from various minerals in the water and in the ash through which the water moved.

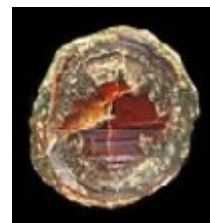
Thundereggs are rough spheres generally about the size of a baseball, but some can range from less than an inch to over three feet across. (The world's largest thunderegg is a 1.75 ton specimen housed by the Rice Northwest Museum of Rocks and Minerals in Oregon – wow!) They usually look like ordinary rocks on the outside. But some thundereggs have a distinct outward appearance that helps identify their locality. Also, slicing and polishing them often reveals intricate patterns and colours that are indicative of locality. Another characteristic of thundereggs is that (like other agates) the individual beds in which they're found can vary in appearance, again indicating a specific locality.

But the term "thunderegg" is not synonymous with either "geode" or "agate". (A thunderegg is, however, one of the forms that agate can assume.) A geode is a term for a hollow, or partially hollow, vaguely circular rock that contains mineral masses and/or crystals. A geode is a secondary occurrence in which minerals, suspended in water, groundwater or hydrothermal fluids, are deposited into existing sedimentary and volcanic rocks. A thunderegg, on the other hand, is a first occurrence geological structure. A thunderegg may be called a geode if it has a hollow in it, but not all geodes are thundereggs because there are many different ways that hollows can form.

Thundereggs are found all over the world wherever the conditions are optimal for their formation. In the United States, Oregon is one of the most famous thunderegg locations (after all, they've got Thunder Spirits). The largest Oregon deposits are found in Crook, Jefferson, Malheur, Wasco and Wheeler counties. It's no wonder that the thunderegg was designated as Oregon's state rock by the Oregon Legislative Assembly on March 30, 1965!

Many rockhounds use thundereggs as attractive coffee-table specimens or even as paperweights. Some folks enjoy the challenge of identifying a thunderegg's original location based on its outward appearance and the minerals it contains. (In grade school, I saw my teacher throw out her thunderegg paperweight. That is the one and only time I was a trash picker.)

References: [wikipedia.org](http://wikipedia.org)



*Thunderegg from South France*



*Thunderegg from Gehlberg Germany*



*Thunderegg from Succor Creek on display at the Oregon State Capitol*

## April Birthdays

4 Ryan McNeal	21 Sam Holliday
5 Autumn Sofka	22 Shrail Heinrich
11 Isabel Leon y Leon	22 Alex McCormick
11 Leslie Malakowsky	23 Bill Friday
17 Bill Sweetman	27 Don Aldridge
19 Thelia DeMoor	28 Billy Todd
20 Jan Edmunds	30 Jane Detwiler
20 Wendy Lear	



April  
Diamond

## Anniversaries

7 Joe & Sherrie Bonin  
8 Mike & Myra Soroczak

## May Birthdays

3 Katherine Spencer	
5 Myra Soroczak	16 Vicki Van Valkenburgh
6 Phil Lester	22 Mike Chivers
7 Iven Holt	26 Trudie Murphy
9 Laura Bath	27 Terry Burcham
13 Laurie Cantrell	27 Chris Kalange
14 Joe Bonin	30 Bob Hayes
15 Cora Patterson	30 Jim Treadway
16 Emily Lear	32 Jeanne Reed
16 Mike Curran	31 Raymond Tanner



May  
Emerald

## Anniversaries

6 John & Julie McCullough  
17 Gerdy & David Wyatt  
18 Chelsey Perry  
18 Mike & Anne Wesley  
29 Norm & Sandy Ballas  
29 David & Diana O'Dell

## April 2019 - Senior Center Lapidary Lab Schedule

To use lapidary equipment, you must be certified unless a licensed instructor is present currently: Bill Friday, Joe Bonin, & Michael Cape

<b>Monday</b>	7:30am-4:30am	Open Lab: Lapidary - certified Seniors & HGMS age 60+ Notice the big change in lab availability
	<b>6:00pm-9:00pm</b>	<b>Open Metal Smithing - Only certified HGMS 18+</b>
<b>Tuesday</b>	7:30am-9:00am	Open Lab: Lapidary - certified Seniors & HGMS 60+
	9:00am—Noon	Silver Jewelry - Ron West, Instructor - Seniors & HGMS 60+
	Noon -3:00 pm	Silver Jewelry - Terry Clarke, Instructor - Seniors & HGMS 60+
	3:00pm-4:30 pm	Open Lab: Lapidary - certified Seniors & HGMS 60+
	<b>6:00pm-9:00pm</b>	<b>Open Lapidary - Only certified HGMS 18+</b>
<b>Wednesday</b>	7:30am-4:30 pm	Open Lab: Lapidary - certified Seniors & HGMS 60+
	<b>6:00pm-9:00pm</b>	<b>Open Lapidary - Only certified HGMS 18+</b>
	<b>6:00pm-9:00pm</b>	<b>Open Jewelry - Only certified HGMS</b>
<b>Thursday</b>	7:30am-9:00am	Open Lab: Lapidary - certified Seniors & HGMS 60+
	9:00am-11:30am	Silver Jewelry - Ron West, Instructor - Seniors & HGMS 60+
	Noon-3:00pm	Wood Carving - Copeland, Instructor - Seniors & HGMS 60+
	3:00pm-4:30 pm	Open Lab: Lapidary -certified Seniors & HGMS 60+
	<b>5:30pm-9:00pm</b>	<b>Metal Smithing &amp; Jewelry Classes— Only certified HGMS 18+</b>
<b>Friday</b>	7:30am-12:00am	Open Lab: Lapidary - certified Seniors & HGMS 60+

## 2019 HUNTSVILLE GEM &amp; MINERAL SOCIETY OFFICERS

President—Bill Friday—256-527-8227—[bill.friday@earthlink.net](mailto:bill.friday@earthlink.net)

Vice President— Michael Cape— [macape@knology.net](mailto:macape@knology.net)

Recording Secretary: Ruth Kemper— [bob\\_kemper@yahoo.com](mailto:bob_kemper@yahoo.com)

Treasurer: Clara Goode, 256-883-9194—[clarag1964@gmail.com](mailto:clarag1964@gmail.com)

Newsletter Editor: Bill Friday - 256-527-8227—[bill.friday@earthlink.net](mailto:bill.friday@earthlink.net)

Directors at Large: Steve Young —[taegu\\_steve@hotmail.com](mailto:taegu_steve@hotmail.com)

Gene Powers—[genepowersgddm@gmail.com](mailto:genepowersgddm@gmail.com)

Michael Soroczak —[Soroczak@yahoo.com](mailto:Soroczak@yahoo.com)

Ex Officio - Brian Burgess— [bburgess771@gmail.com](mailto:bburgess771@gmail.com)

Federation Liaison - Les Bartel - 131 Oakland Trace, Madison AL 35758 [lester.bartel@gmail.com](mailto:lester.bartel@gmail.com)

## 2019 COMMITTEE CHAIRS

Membership: Bill Friday— 256-527-8227

[bill.friday@earthlink.net](mailto:bill.friday@earthlink.net)

2508 Excalibur Dr. Huntsville AL 35803

Pubicity: Bob Kemper

[bob\\_kemper@yahoo.com](mailto:bob_kemper@yahoo.com)

Webpage: Leslie Malakowsky,

[lmalakowsky@gmail.com](mailto:lmalakowsky@gmail.com)

Auction Chair: Shelley Curran

[curranshelley1@gmail.com](mailto:curranshelley1@gmail.com)

Field Trips: Brian Burgess, 256-479-2993

[bburgess771@gmail.com](mailto:bburgess771@gmail.com)

Hospitality: Caryl Nixon 256-426-5061

[caryl.nixon@outlook.com](mailto:caryl.nixon@outlook.com)

Mineral ID: Michael Soroczak

[soroczak@yahoo.com](mailto:soroczak@yahoo.com)

(William Holland offers a class for this)

Property: Chris Kalange,

[ckalange@comcast.net](mailto:ckalange@comcast.net)

Program Chair—Mike Harrison -

[wm.harrison.123@gmail.com](mailto:wm.harrison.123@gmail.com)

Show Chair: Tony Smith, 256-603-3095.

[tsmith@erc-incorporated.com](mailto:tsmith@erc-incorporated.com)

Show Vendor Chair: Lowell Zoller, 256-534-8803

[Lzol@comcast.net](mailto:Lzol@comcast.net)

Show Volunteer Chair: Open

Show Publicity Chair - Tony Smith

[tsmith@erc-incorporated.com](mailto:tsmith@erc-incorporated.com)

Show Treasurer: Clara Goode, 256-883-9194

[clarag1964@gmail.com](mailto:clarag1964@gmail.com)

**PURPOSE OF THE SOCIETY:** The Huntsville Gem & Mineral Society is a non-profit educational organization for people interested in mineralogy, geology, paleontology, and related lapidary arts. Its primary purpose is the education of the members and the general public in these areas. This purpose is accomplished through programs, shows, lectures to school children and organizations, and exchange of rocks, minerals, artifacts, and newsletters.

**DUES:** Annual dues are \$15.00 per person, \$20.00 per family, and are due on January 1st of each year

Membership Applications may be found at our webpage [www.Huntsvillegms.org](http://www.Huntsvillegms.org), at meetings, or the lab

**MEETING PLACE:** Huntsville/Madison County Senior Center, 2200 Drake Ave, Huntsville, AL at 6:30pm.

**DATE:** Fourth Tuesday of each month except for April Auction, June picnic, Christmas Dinner and major holidays.

**Federation Liaison: Huntsville Gem & Mineral Society,** 131 Oakland Trace, Madison AL 35758

Attn: Les Bartel

**The Society is affiliated with the American Federation of Mineralogical Societies ,  
the Southeast Federation of Mineralogical Societies, and the Dixie Mineral Council**

**Federation Newsletters:**

**SFMS:** [www.amfed.org/sfms/lodestar\\_newsletter.html](http://www.amfed.org/sfms/lodestar_newsletter.html)

**AFMS:** [www.amfed.org/news/default.htm](http://www.amfed.org/news/default.htm)

**DMC:** [http://www.amfed.org/sfms/\\_dmc/dmc.htm](http://www.amfed.org/sfms/_dmc/dmc.htm)



# 2019 CALENDAR



- 23 Apr '19 - Regular HG&MS Meeting, Madison County Senior Center,  
2200 Drake Ave, Huntsville, AL 6:30pm
- 28 May '19 - Regular HG&MS Meeting, Madison County Senior Center,  
2200 Drake Ave, Huntsville, AL 6:30pm
- 25 Jun '19 - Regular HG&MS Meeting, Madison County Senior Center,  
2200 Drake Ave, Huntsville, AL 6:30pm
- 29 Jun '19 (Saturday) - Annual Picnic and Rock Swap - Monte Sano State Park, Huntsville  
Large Pavilion in the Picnic Area - 9:00 till 2:00
- 23 Jul '19 Regular HG&MS Meeting, Madison County Senior Center,  
2200 Drake Ave, Huntsville, AL 6:30pm
- 27 Aug '19 Regular HG&MS Meeting, Madison County Senior Center,  
2200 Drake Ave, Huntsville, AL 6:30pm
- 24 Sep '19 - Regular HG&MS Meeting, Madison County Senior Center,  
2200 Drake Ave, Huntsville, AL 6:30pm
- 11-13 Oct '19 HGMS Fall Show, Jaycees Bldg, 2180 Airport Rd, Huntsville AL
- 22 Oct '19 - Regular HG&MS Meeting, Madison County Senior Center,  
2200 Drake Ave, Huntsville, AL 6:30pm
- 26 Nov '19 - Regular HG&MS Meeting, Madison County Senior Center,  
2200 Drake Ave, Huntsville, AL 6:30pm

Deadline for Next Newsletter— May18, 2019

**Dated material  
Do not Delay**

Rocket City Rocks & Gems  
Bill Friday, Editor  
2508 Excaltibur Dr.  
Huntsville, AL 35803  
HGMS April 2019