

ROCKET CITY ROCKS & GEMS



The Monthly News Bulletin of the Huntsville Gem & Mineral Society

Volume 51 No. 3

"We'll go to the Moon for a Rock"

March 2019

INSIDE THIS ISSUE

President's Note	2
Fall Show Competitive Displays	2
Minutes for Feb meeting	3
Fossil/Geology Group Report	4
Brad's Bench Tips	4
Pebble Pups	5
Metalsmithing Corner.....	5
Rocket City Jewelers	6
Dixie Mineral Council Field Trip	6
Feature Article.....	7
March /April Birthdays & Anniversaries.....	8
Lapidary Lab Schedule	8
2019 Officers & Committees.....	9
Calendar.....	10



Auction This Weekend

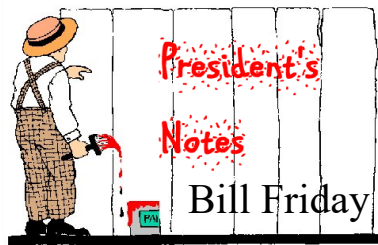
Many treasures to be had up for bid. Stones, jewels, machines, carvings, and oddities. Come to enjoy - help with the operation, bid on the offerings, eat delicious food, and have a great time. Invite all of your friends as well. The revenue will keep our HGMS healthy and active supporting all of our activities.



www.huntsvillegms.org/ - www.facebook.com/HuntsvilleGMS -



Huntsville Gem & Mineral Society (HGMS) 2019. Reprinting Rights are granted for all material (except for minutes of the meeting and copyrighted articles) to any organization officially affiliated with the American Federation of Mineralogical Societies (AFMS) or Southeastern Federation of Mineralogical Societies (SFMS), provided credit is given to the author, the original publication, and this newsletter



Sometimes folks get too busy for their own good, and I'm guilty. Last weekend was a great Spring Show event for my Southland Flywheelers Antique Tractor and Engine Club - a bit exhausting but lots of fun, with visitors watching old tractors rolling around, hit and miss engines putt-putting all over, and me ginning cotton with my 1885 Van Winkle cotton gin. It took a couple more days to get everything put back where it belongs awaiting the next Show.

And the fact that the Gem & Mineral Club Newsletter was supposed to go out before the weekend even started got completely overpowered in my poor mind. So this issue is not only late by the normal deadline circumstance, it is going out in electronic form the same day as the Jewelry event tonight. So I've sent my apologies to Leslie and am rushing this into the ether for your perusal. The paper copy won't go out until tomorrow.

Last meeting I had proposed a March regular meeting in addition to the Auction, which is this coming weekend, but under the same distraction of tractors and cotton gins, I've let that date (next Tuesday) get upon us with no program lined up. Shelley wasn't keen on having to worry about it and the Auction too so she is not worried that I'm cancelling, or actually, not even scheduling that meeting. We will probably have an extra meeting in June besides the Picnic - to be decided (well ahead of) that date.

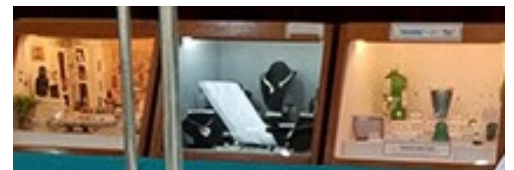
So enjoy this very late newsletter, Jewelers enjoy the class tonight, and everyone come out to the Auction on Saturday at the Jaycees Building.

Your (heavily distracted) Editor Bill Friday

Would you like to win prizes for displaying your most valuable treasures?

Richard Hoover has offered to provide guidance in preparing competitive display cases for our Fall Show. With the Southeast Federation of Mineralogical Societies coming here for their Fall Meeting, we will have among us some of the best judges available from the Southeast Federation to select the winners. Those displays will become eligible for further prizes at the Southeast Federation level. We will be improving our display cases for this purpose. Mike Harrison has taken on this project and the results should be inspiring.

There may be entries from other area Gem & Mineral Societies entering at our Show, but most will be from our own membership. Besides the case entries, there will be a single-piece category, for which the standards will be extra tough but for which there may be cash prizes - with the caveat that the money will be in the form of a coupon, redeemable with the Show Vendor of your choice.



Bring back your Fall Show yard signs

These signs are expensive and if they aren't returned, new ones will have to be made. Please check the corners of your garage to see if any from past years are lurking in dark corners or closets.

HGMS Regular Meeting Minutes 26 Feb 2019

William Holland/Wildacres – Scholarships were drawn for the schools of lapidary arts. Primary recipients are: Bob Kemper and Wayne Hall. Alternate recipients are: #1 Lynn Peete and #2 Mike Soroczak.

Budget Report – Bill displayed the 2019 budget report on a projector screen to the audience. He explained the categories of where money was allocated for funding. The budget was offered for approval, and was accepted by majority vote.

Publicity – Bob Kemper has assumed the responsibilities for the HGMS Publicity Role.

Ruth Kemper will continue to be the secretary until the end of year.

HGMS Auction – March 23rd 2019 in the Jaycee Building 2180 Airport Road, Huntsville. Viewing will be at 09:00 and the auction will begin at 10:00. There will be free admission and free parking. Food will be provided by Wheelies Café.

Attendance – 47 members participated in tonight's meeting including two new member families: Joe & Carrie Staton, Richard Hoover, Paul & Susan DuPre'; first time visitor Alisha McNeal. Two other families have recently joined: Elizabeth & Kurt Springfield and Cathy Nall.

Bill asked Metal Smithing, Pebble Pups or Rocket City Jewelers leaders to defer explanations of upcoming sessions. The meeting was running late and these groups all publish in the newsletter.

Lab – Lapidary lab is getting a new security camera. Recordings can be checked to help safeguard equipment and identify anyone misusing it.

Fossils/Geology – The second meeting is March 7th at 6:30 in the painting room. Twenty-one people attended the first meeting on February 7th.

Science Olympiad – Science Olympiad was a huge success this year. 17 middle school and 19 high school teams competed for placement with the testing subject of fossils. Teams were scored on their knowledge, participation, and team spirit.

Southeast Federation of Mineral Society (SFMS) – Their Annual Meeting will coincide with and be hosted by the HGMS Fall show this year. There will be displays competing for the right look, direct and succinct information, and knowledge of the topic. Richard Hoover will instruct the HGMS members at a future monthly meeting on tips for competing and how to set up a proper display. There may be as many as 40 showcases. Bill recommended to build new showcases for the competition since the ones HGMS own are in poor shape and look in need of serious repair. This discussion led to a future requirement to inventory what HGMS has for this year's show and make determinations on what we want to keep.

Rock & Gem Show – Show Volunteer Chairman position is open and we are looking for someone to volunteer for this slot.

Hospitality – Caryl provided sign-up sheets for folks to sign up for the March/April/May time frames to bring food in for our meetings.

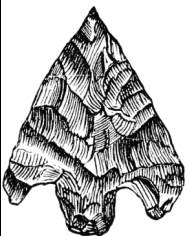
Next meeting will be on March 26th, 2019.

Tonight's Program was **Show-and-Tell** for folks whose last names began with A thru G.

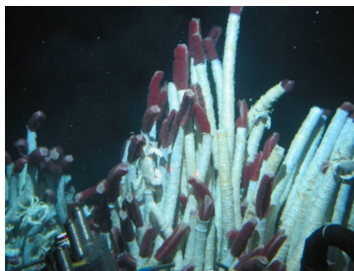
Presenters were: Mary Jean Brost Travis, Cindy Bonds, Lester Bartel, Thelia DeMoor, and Bill Friday. They displayed some of their treasured stones and jewelry and told interesting stories about them.

Geology & Fossil & Indian Artifact SPECIALTY GROUP

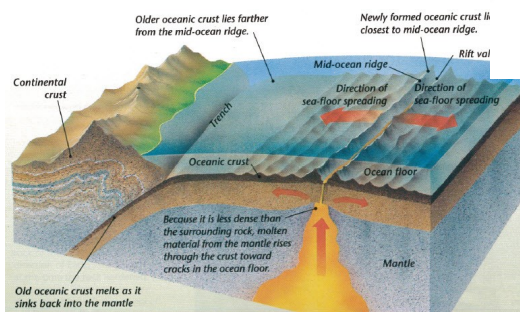
The next meeting will be Second Thursday April 9th, 6:30. First Thursdays are in permanent conflict for some who want to attend, but so are all other nights for others, and Tuesdays & Thursdays are the only nights that the Painting Room is available. We will work these problems out.



The program will be a follow-up to the Mid-Ocean Ridge discussion, this time being a biology study of the critters which inhabit those ridges. With no sunlight, they don't have access to photosynthesis, so the bacteria eat hydrogen sulfide through a process called chemosynthesis, making sugar, which feeds everything else through a long food chain. Should be fun.



Mid-Ocean Ridge Tube Worms



Brad's Bench Tips

"Bench Tips for Jewelry Making" and "Broom Casting for Creative Jewelry" are available on Amazon www.BradSmithJewelry.com

For those who enjoy these bench tips, I'm happy to announce a second volume is now available on Amazon. "More Bench Tips" includes 86 additional ways to save time, avoid frustration or improve quality at the bench. These new tips cover problems in fabrication, stone setting, casting, soldering and polishing. Browse through a couple of the new ones at <https://amazon.com/dp/B07D4B45JJ/>. These are just a few of the many tips in the new book, "More Bench Tips for Jewelry Making". See a sample chapter at <https://amzn.to/2KCygh4>



PROTECTING FINISHED SURFACES

I figure that any accidental scratch I make on a piece means about 15 minutes of extra sanding and polishing. So after finishing major surfaces I typically cover them with some masking tape to avoid any scratches when doing final work like cleanups and setting of stones. The blue masking tape used by painters works particularly well because it doesn't leave a sticky residue.

MAKE A TEXTURE HAMMER

An inexpensive hammer can be easily turned into a great texturing tool by grinding a pattern of narrow lines into its face. The tool I like to use to grind the pattern is a thin separating disc in a Foreman or Dremel. Be sure to hold the hammer and separating disc steady as you carve, and wear those safety glasses to protect your eyes.



For the pattern to work well, a major part of the face needs to be ground away leaving only small areas of high points. That way the high points will have enough force to emboss the pattern into your sheet metal.

My preference is to use small ball peen or cross peen hammers. They are quite inexpensive from tool dealers at swap meets and rock & mineral shows. There is no reason to buy an expensive hammer to experiment with creating your own textures.

And BTW, if you don't like the first pattern you create, simply file or grind it off and try again.



Pebble Pups

Madison County Senior Center Cafeteria
2200 Drake Ave, Huntsville AL
Brian Burgess 256-479-2993
bburgess771@gmail.com



Upcoming meeting - February 28, 6:00 to 7:00 March Meeting will be on the 28th

This will be the first of three meetings to solve a mystery. I will have mineral specimens that you will pick from and you have to tell me its name. We will work in groups of 2 or 3 and each Pup will pick a different mineral. Various tests will be applied - scratch, solubility, color, hardness, density, etc. Those that have been around and still can find there books, bring them. Remember safety when completing the test on the minerals.

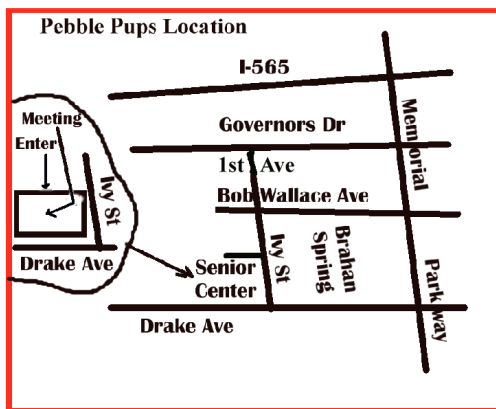
I have begun to update the Pup website calendar. As I get confirmation on field trips, guest speakers, and club events I will add them to the calendar. I have sent emails for Cane Creek Canyon and Steven Minkin Footprint site and waiting for responses. Need input for Hogg Mine on who wants to venture there and also which site to go shark tooth hunting. I will update the Field Trip Info section on the website with polls for you to decide where and when we go. I will leave the Field Trip Information up on this section for those that are new to the Pups. I will add the date for the field trip once it has been decided.

Cedar Creek fossils, near Red Bay AL—date yet to be settled

New members are always welcome. Bring your friends.

Enter the north door of the Senior Center, 2200 Drake Ave. and straight ahead to the cafeteria.

If anyone has any questions, please contact Brian 256-479-2993 or Bill Friday 256-527-8227, bill.friday@earthlink.net



Metal Smithing/Silver Group by Kathy Bowman & Shelley Curran

Continuing Project Class Etched mixed metal, multilayered, linked bracelet. Two part class for March and April.

Part 2. April 4th. 6:00 pm

Class will use the metals we etched in part one to build the bracelet. The patterned metals will be shaped and layered and soldered together to make individual links. Each link will be different.

Most will make six links to get the necessary length. The links will then be finished into a toggle closure bracelet. Basic soldering skills required.

Kit will include everything necessary to finish the bracelet. Cost will be minimal as metals and such were purchased last month.

Volunteer Positions

Class Instructors: Kathy Bowman & Shelley Curran

Toolbox Sign-outs Chris Kalange

Inventory Manager **Opening**

Store Manager **Opening**

Kit Manager Shelley Curran

Webpage & Social Media Management Kathy Bowman



Rocket City Jewelers (RCJ) News *By Leslie A. Malakowsky*

This month we started a new series. On the **3rd Wednesday of the month**, Judy will show us how to make a sample of a different chainmaille weave. So far, we've made Viper's Basket, Box Chain, Byzantine, and Full Persian/Foxtail. This series will continue for as long as there is interest.

The **Bead and Washer Bracelet class** was **rescheduled for Wednesday, March 20th**. You'll wire stone beads into copper washers, link the washers together with jump rings, and attach a clasp. The kit cost is \$3.75.

Now taking reservations for the **Celtic Visions Chainmaille Bracelet class** on **Wednesday, April 3rd**. This weave has several variations. You'll have enough jump rings in your kit to make a bracelet plus a sample. If desired, you can create a focal piece for your bracelet. You'll need to make or bring a clasp. The kit cost is \$6.75. The deadline to RSVP is **Wednesday, March 27th**. Contact Judy or send email to hsvgems@gmail.com.



Upcoming Schedule:

March 20th – Bead and Washer Bracelet

March 27th – Open

April 3rd – Celtic Visions Chainmaille Bracelet

April 10th – Open

April 17th – Chainmaille sample(s)

April 24th – Open

Lead Instructor/ Group Leader Leslie Malakowsky

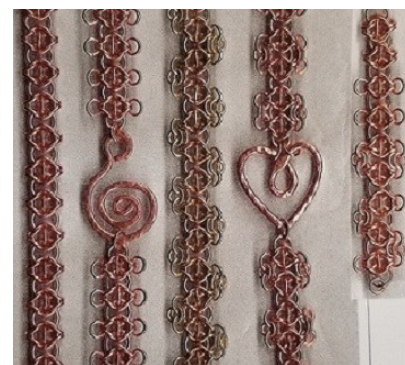
Instructors Judy Osmundson, Myra Soroczak

Kit Manager Sherrie Bonin

Treasurer Clara Goode

Facebook Karen VanBebber

Security Joe Bonin



We want to **wish Chris the best of health and thank Joe** for providing security while Chris is recovering.

RCJ is open to every member of the HGMS. (Gentlemen, too!) **If you love making jewelry, please visit us!**

All skill levels are welcome! We meet every Wednesday from 6-9p.m. in the Paint Room (next to the Lapidary Shop) at the Huntsville-Madison County Senior Center, 2200 Drake Avenue, Huntsville.

Important: Please park in the **North parking lot** and enter the building at the **entrance next to Meals On Wheels**. The door is locked after 6:30p, so if you need to arrive later, please text me and someone will let you in.



Dixie Mineral Council Field Trips

The Southeast Federation of Mineralogical Societies, Inc

The Friendly Federation - Founded in 1976 to serve

DMC Program of the SFMS Field Trip Committee

Copyright © All rights reserved.



Saturday, Apr 6 & 7, 2019 Bartow County, GA Registration Required

Meet no later than 8:30 AM EST, Caravan into Quarry at 9:00 AM EST

TRIP: The first location is part of the Corbin Gneiss Complex where porphyroblastic granite gneiss is being mined. The rocks there are some of the oldest in Georgia - approximately 1.2 billion years. We will be collecting granite gneiss with blue quartz. Small pieces can be collected by hand and larger pieces can be collected with hammer and chisel. **REGISTRATION:** Participants must **register** no later than **March 30** because property owners need a head count. To register, send email to fieldtrips@gamineral.org with the name(s) of participants and your club name. **REQUIREMENTS:** The **first** location requires **gloves, safety glasses, hard hat, and steel toed or sturdy boots with ankle support** STAY AWAY from all heavy equipment, high walls, ponds, and quarry machinery. **only registered attendees will receive directions via email.** **CONTACT:** Charles Carter, 770-998-1127, fieldtrips@gamineral.org

Mineral of the Month – Spodumene

By Leslie A. Malakowsky



Spodumene, also called triphane, is a lithium-aluminum silicate mineral with the formula $\text{LiAl}(\text{SiO}_3)_2$. It's one of a group of important rock-forming minerals called *pyroxenes* that are present in many igneous and metamorphic rocks. In particular, spodumene is found in lithium-rich granite pegmatites (igneous rocks, formed underground, with interlocking crystals) and aplites (intrusive igneous rocks in which the mineral composition is the same as granite, but the grains are much finer, less than 1mm wide). The minerals



associated with spodumene include quartz, lepidolite and beryl.

The most common form of spodumene is long, flat prismatic crystals, some of great size, often with lengthwise striations. Single crystals of up to 47 feet have been found in the Black Hills of South Dakota! The crystals can be colorless, white, gray, pink, violet, green, yellow, brown and sometimes, multicolored. Even the transparent gemmy forms can occur in huge water-clear crystals so large they need to be held with both hands!

Spodumene was first described in 1800 by Brazilian naturalist Jose Bonifacio de Andrada e Silva for in the type locality in Utö, Södermanland, Sweden. The name *spodumene* is derived from the Greek *spodumenos*, meaning "burnt to ashes," because of the mineral's opaque, ash-grey appearance when refined for use in industry. Today, the main sources of spodumene in the United States are California and North Carolina.

Spodumene is an important source of lithium for use in ceramics (most notably, Pyroceram, a unique glass-ceramic first developed and trademarked by Corning Glass in the 1950's), mobile phones, automotive batteries, and medicine, and as a fluxing agent. In the late 1970's, Corning France developed Visions cookware, a transparent version of Pyroceram made using quartz instead of spodumene. Knowing this may inspire you to appreciate your Corning cookware even more!

In its most common form, spodumene is rather dull and uninteresting. But colorless spodumene and its two distinctly-colored transparent varieties are aesthetic and valued as gemstones. Kunzite is the pink, purple, or lilac variety, and *hiddenite* is the emerald-green or yellow-green variety.

Kunzite was first discovered in 1902 by George Frederick Kunz an American mineralogist and mineral collector for whom the new mineral was named. He was Tiffany & Company's chief jeweler at that time. Pictured is the kunzite gem featured in the Duchess of Gloucester's tiara.

Kunzite is known for its distinct pink color which is due to minor amounts of manganese. Light pink kunzite is often heated or irradiated to enhance its color. Even brownish and greenish-brown spodumene is sometimes heated to transform it to light green or pink. Also note that kunzite may fade slightly with prolonged exposure to sunlight.

Hiddenite was first discovered in 1879 in White Plains, North Carolina. The samples fell into the hands of William Earl Hidden, a mining engineer and mineral collector. Hidden sent the samples to J. Lawrence Smith, a prominent Kentucky chemist and mineralogist. Smith correctly identified them as a variety of spodumene. Smith named the mineral hiddenite in honor of Hidden, and White Plains would later be renamed Hiddenite. Hiddenite is much rarer than kunzite and is highly valued, especially the deeper green crystals. The green color is due to chromium, just like emerald. However, not all green spodumene is colored with chromium. That spodumene tends to have a lighter color, and therefore is not true hiddenite. Also note that hiddenite, like kunzite, can gradually fade.

As newer deposits of green spodumene have been found in other parts of the world, the term "hiddenite" is now applied to all transparent green spodumene. But there's still much debate in the mineral community whether the new finds are true hiddenite. And some claim that the new finds have been irradiated to enhance their color.

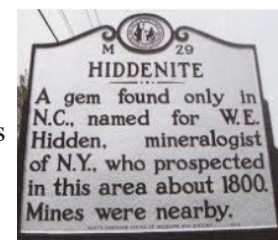
Collectors like spodumene because:

Spodumene and its varieties are strongly pleochroic. Pleochroism is an optical phenomenon in which a mineral displays different colors when viewed at different angles, especially with polarized light. Pleochroism is most easily observed in transparent crystals, and the colors range from yellow to violet. Pink kunzite often exhibits a deeper pink color on crystal terminations due to pleochroism.

Some spodumene fluoresces white to blue when exposed to shortwave ultraviolet light and dark orange to orange-red in longwave ultraviolet light.

Spodumene easily pops out of its host rock, therefore matrix specimens are rare and highly sought by collectors. Spodumene easily alters to other minerals (most often to feldspars and micas), and into clay. Sometimes, a crystal may be only partially altered, creating an intriguing specimen.

References: wikipedia.org, mindat.org, minerals.net Photos: spodumene – etsy.com, Kunzite tiara – thecourtjeweler.com, Hiddenite historical marker – wikivividly.com, hiddenite – wikipedia.org



March Birthdays

5 Allison Kowalczyk	18 Michael O'Dell
5 Jacob Roberts	18 Ola Ann Lee
9 Hannah Mayes	19 Ben Carroll
9 Julie McCullough	20 Dennis Peterson
13 Karen van Bebber	21 Leigh Ann Hurst
13 Lena Elmore	21 Teresa Roberts
14 Sarah Herman	22 Susan Hessler
15 Patty Jo Adomatis	22 Gene Powers
15 Carol Roden	22 Harry Wiley
15 Johnce Smith	29 Linda McKinney
16 June Kalange	30 Dennis Peterson

Anniversaries

14 Ben & Monika Carroll
22 Wayne & Rhonda Hall
24 Margaret & Jerry Olson



April Birthdays

4 Ryan McNeal	21 Sam Holliday
5 Autumn Sofka	22 Shrail Heinrich
11 Isabel Leon y Leon	22 Alex McCormick
11 Leslie Malakowsky	23 Bill Friday
17 Bill Sweetman	27 Don Aldridge
19 Thelia DeMoor	28 Billy Todd
20 Jan Edmunds	30 Jane Detwiler
20 Wendy Lear	



April
Diamond

Anniversaries

7 Joe & Sherrie Bonin
8 Mike & Myra Soroczak

March 2019 - Senior Center Lapidary Lab Schedule

To use lapidary equipment, you must be certified unless a licensed instructor is present currently: Bill Friday, Joe Bonin, & Michael Cape

Monday	7:30am-9:00am	Open Lab: Lapidary - certified Seniors & HGMS 60+
	9:00am- Noon	Silver Jewelry - Ron West, Instructor - Seniors & HGMS 60+
	Noon-4:30pm	Open Lab: Lapidary - certified Seniors & HGMS 60+
	6:00pm-9:00pm	Open Metal Smithing - Only certified HGMS 18+
Tuesday	7:30am-9:00am	Open Lab: Lapidary - certified Seniors & HGMS 60+
	9:00am—Noon	Silver Jewelry - Ron West, Instructor - Seniors & HGMS 60+
	Noon -3:00 pm	Silver Jewelry - Terry Clarke, Instructor - Seniors & HGMS 60+
	3:00pm-4:30 pm	Open Lab: Lapidary - certified Seniors & HGMS 60+
Wednesday	6:00pm-9:00pm	Open Lapidary - Only certified HGMS 18+
	7:30am-4:30 pm	Open Lab: Lapidary - certified Seniors & HGMS 60+
	6:00pm-9:00pm	Open Lapidary - Only certified HGMS 18+
	6:00pm-9:00pm	Open Jewelry - Only certified HGMS
Thursday	7:30am-9:00am	Open Lab: Lapidary - certified Seniors & HGMS 60+
	9:00am-11:30am	Silver Jewelry - Ron West, Instructor - Seniors & HGMS 60+
	Noon-3:00pm	Wood Carving - Copeland, Instructor - Seniors & HGMS 60+
	3:00pm-4:30 pm	Open Lab: Lapidary -certified Seniors & HGMS 60+
Friday	5:30pm-9:00pm	Metal Smithing & Jewelry Classes— Only certified HGMS 18+
	7:30am-12:00am	Open Lab: Lapidary - certified Seniors & HGMS 60+

2019 HUNTSVILLE GEM & MINERAL SOCIETY OFFICERS

President—Bill Friday—256-527-8227—bill.friday@earthlink.net

Vice President— Michael Cape— macape@knology.net

Recording Secretary: Ruth Kemper— bob_kemper@yahoo.com

Treasurer: Clara Goode, 256-883-9194—clarag1964@gmail.com

Newsletter Editor: Bill Friday - 256-527-8227—bill.friday@earthlink.net

Directors at Large: Steve Young —taegu_steve@hotmail.com

Gene Powers—genepowersgddm@gmail.com

Michael Soroczak —Soroczak@yahoo.com

Ex Officio - Brian Burgess— bburgess771@gmail.com

Federation Liaison - Les Bartel - 31 Oakland Trace, Madison AL 35758 lester.bartel@gmail.com

2019 COMMITTEE CHAIRS

Membership: Bill Friday— 256-527-8227

bill.friday@earthlink.net

2508 Excalibur Dr. Huntsville AL 35803

Pubicity: Bob Kemper

bob_kemper@yahoo.com

Webpage: Leslie Malakowsky,

lmalakowsky@gmail.com

Auction Chair: Shelley Curran

curranshelley1@gmail.com

Field Trips: Brian Burgess, 256-479-2993

bburgess771@gmail.com

Hospitality: Caryl Nixon 256-426-5061

caryl.nixon@outlook.com

Mineral ID: Michael Soroczak

soroczak@yahoo.com

(William Holland offers a class for this)

Property: Chris Kalange,

ckalange@comcast.net

Program Chair—Mike Harrison -

wm.harrison.123@gmail.com

Show Chair: Tony Smith, 256-603-3095.

tsmith@erc-incorporated.com

Show Vendor Chair: Lowell Zoller, 256-534-8803

Lzol@comcast.net

Show Volunteer Chair: Open

Show Publicity Chair - Tony Smith

tsmith@erc-incorporated.com

Show Treasurer: Clara Goode, 256-883-9194

clarag1964@gmail.com

PURPOSE OF THE SOCIETY: The Huntsville Gem & Mineral Society is a non-profit educational organization for people interested in mineralogy, geology, paleontology, and related lapidary arts. Its primary purpose is the education of the members and the general public in these areas. This purpose is accomplished through programs, shows, lectures to school children and organizations, and exchange of rocks, minerals, artifacts, and newsletters.

DUES: Annual dues are \$15.00 per person, \$20.00 per family, and are due on January 1st of each year

Membership Applications may be found at our webpage www.Huntsvillegms.org, at meetings, or the lab

MEETING PLACE: Huntsville/Madison County Senior Center, 2200 Drake Ave, Huntsville, AL at 6:30pm.

DATE: Fourth Tuesday of each month except for April Auction, June picnic, Christmas Dinner and major holidays.

Federation Liaison: Huntsville Gem & Mineral Society, 3015 Monterey Dr., SW, Decatur AL 35603 Attn:

Mark Habercom

**The Society is affiliated with the American Federation of Mineralogical Societies ,
the Southeast Federation of Mineralogical Societies, and the Dixie Mineral Council**

Federation Newsletters:

SFMS: www.amfed.org/sfms/lodestar_newsletter.html

AFMS: www.amfed.org/news/default.htm

DMC: http://www.amfed.org/sfms/_dmc/dmc.htm



2019 CALENDAR



- 23 Mar '19 (Saturday) - Annual Fund Raiser Auction - 9:00 am
Jaycees Bldg, 2180 Airport Rd, Huntsville AL
- 23 Apr '19 - Regular HG&MS Meeting, Madison County Senior Center,
2200 Drake Ave, Huntsville, AL 6:30pm
- 28 May '19 - Regular HG&MS Meeting, Madison County Senior Center,
2200 Drake Ave, Huntsville, AL 6:30pm
- 25 Jun '19 - Regular HG&MS Meeting, Madison County Senior Center,
2200 Drake Ave, Huntsville, AL 6:30pm
- 29 Jun '19 (Saturday) - Annual Picnic and Rock Swap - Monte Sano State Park, Huntsville
Large Pavilion in the Picnic Area - 9:00 till 2:00
- 23 Jul '19 Regular HG&MS Meeting, Madison County Senior Center,
2200 Drake Ave, Huntsville, AL 6:30pm
- 27 Aug '19 Regular HG&MS Meeting, Madison County Senior Center,
2200 Drake Ave, Huntsville, AL 6:30pm
- 24 Sep '19 - Regular HG&MS Meeting, Madison County Senior Center,
2200 Drake Ave, Huntsville, AL 6:30pm
- 11-13 Oct '19 HGMS Fall Show, Jaycees Bldg, 2180 Airport Rd, Huntsville AL
- 22 Oct '19 - Regular HG&MS Meeting, Madison County Senior Center,
2200 Drake Ave, Huntsville, AL 6:30pm

Deadline for Next Newsletter— April 13, 2019

**Dated material
Do not Delay**

HGMS March 2019
 Huntsville, AL 35803
 2508 Excaltibur Dr.
 Bill Friday, Editor
 Rocket City Rocks & Gems