

ROCKET CITY ROCKS & GEMS



The Monthly News Bulletin of the Huntsville Gem & Mineral Society, Huntsville, Alabama

Volume 50 No. 6

"We'll go to the Moon for a Rock"

June 2018

INSIDE THIS ISSUE

President's Notes	2
Picnic Notes & Photos	2,3
Minutes from May Meeting.....	4
Rocket City Jewelers	5
Metalsmithing Corner.....	6
Pebble Pups	7
Feature Articles.....	8,9
Brad's Bench Tips	10
DMC Field Trip (HGMS Host).....	11
June/July Birthdays & Anniversaries.....	12
Lapidary Lab Schedule	12
2018 Officers & Committee Chairmen	13
Calendar.....	14



HGMS is hosting the July DMC Field Trip to the Hogg Mine in LaGrange GA. Contact Brian Burgess if you wish to help with the host duties. bburgess771@gmail.com , 256-746-0641

Visit us at www.huntsvillegms.org/ and www.facebook.com/HuntsvilleGMS



Huntsville Gem & Mineral Society (HGMS) 2018. Reprinting Rights are granted for all material (except for minutes of the meeting and copyrighted articles) to any organization officially affiliated with the American Federation of Mineralogical Societies (AFMS) or Southeastern Federation of Mineralogical Societies (SFMS), provided credit is given to the author, the original publication, and this newsletter

President's Notes By Bill Friday

Enjoy this Summer weather while you can - even the interminable rain. It is still far better than past years of serious drought. A few years ago I visited Fort A.P. Hill near Washington DC in January, finding the place covered by over a foot of snow, with another two feet on the way. I took a photo, and in July when I was back there for the Boy Scout National Jamboree, sweltering in 100+ degree sunshine, I posted that snow photo on the wall as a reminder.

Activity in the Lapidary Lab has slacked off, but certainly not stopped. New members are coming in for instruction, and others are polishing their skills. The machines are behaving, with some minor wear and tear repairs needed.

This is a great time for field trips, with many opportunities for getting out in the wild to collect treasures, including rocks & minerals and fossils. The HGMS gets the opportunity to again host a Dixie Mineral Council field trip to the Hogg Mine next month. Several workers will be needed, and to the credit of our membership, several have signed up. The July newsletter will come out ahead of the trip with final status updates.

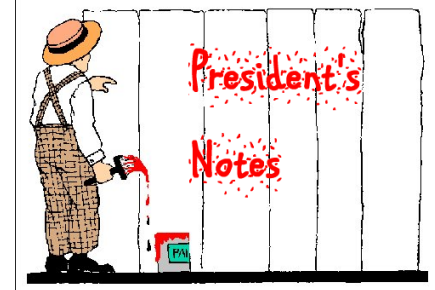
Other in-house programs also continue to be active including Jewelry and Metals. Pebble Pups has grown, with excellent programs and several great field trips arranged for the summer. Regular HGMS meetings resume in July, when hopefully we will learn about the fantastic fossils found on Burgess Mountain in Canada.

It is none too early to be thinking about the Fall Show, whether you plan to chair a section, work in a section, or just shop for goodies. There are several things that have to happen well ahead. We will need to have bags filled for the flume, rocks bagged for the gem dig, and supplies for these two activities inventoried and probably augmented with new stock. Advertising through various media must be arranged well ahead. Hopefully we can place a display in the Library again, with a big sign for the Fall Show. As the Show gets close, there are several critical activities in preparation - marking off the floor, bringing in Show support materials, bringing in the flume and gem dig trailers, setting up the Fluorescent Room, escorting and assisting Dealers and Demonstration setups, and coordinating the Dealer/Worker Thursday Supper. During the Show there are numerous tasks which require full time support, such that shifts of workers are needed to provide complete coverage. Make your plans to help in any way you can.

I've included below a letter from one of our long time members whose daughter grew up in the HGMS and who still helps with the Fall Show. Trudie has certainly done well in her preparatory years and will continue to do so. Any members who would like to let their young ones shine for having done well in their young lives are invited to send in their brag. Too few kids get to be recognized when they have excelled in their accomplishments. So send in their stories. And many kids do excel - we just don't hear about them.

Plans to have the newsletter out two weeks ago got overcome by events. I spent a week and a half in Montgomery at a huge Tractor Show called Red Power Round Up - featuring International Harvester Machinery. Hot and wet, and nothing to do with rocks, but I had a great time.

I'm certainly enjoying my Summer - hope you are as well



HGMS is hosting the July DMC Field Trip to the Hogg Mine in LaGrange GA. Contact Brian Burgess if you wish to help with the host duties. bburgess771@gmail.com , 256-746-0641

PICNIC News Caryl Nixon, Hospitality Chair

Wow! What a great turnout we had for the picnic! We had so many people, we ran out of meat and made a run to Ted's BBQ at Five Points for more. Thanks to everyone who brought food, helped to set up & clean up, and who made this picnic such a success! For the people who didn't join us, you missed a fun, albeit hot, day. At least we had plenty of shade, some cool breezes, and it didn't rain, which had been forecast earlier in the week. We had several people participate in the rock swap/sale, which is always a treat. Looking forward to next year's picnic. Enjoy your Summer, and stay safe and well! See pictures on next page.

Picnic on the Mountain



Lots of Great Food



Fun



Fellowship
&
Rock
Swap



HGMS MAY 2018 MEETING MINUTES

Opening: Bill Friday opened the meeting at 6:30. There aren't any minutes from April because we had the auction rather than a meeting.

New Members: Four new members attended the meeting. Norm Ballas, Sandy Ballas, Royal Richey, and Jan Edmunds.

Picnic: The picnic is 16 June in the large pavilion at Monte Sano State Park. The meats are being catered and members are encouraged to bring a pot-luck dish to fill in things they like to share. Entrance to the park is free if you let the person at the gate know you're there with the gem and mineral society. The pavilion is ours all day. In the past most people began to show up around 10 or 11 to set up the food. Bring along anything you'd like to sell or swap, or even just show some of the things you've made. The next newsletter will be sent out before the picnic so all submissions are due to Bill by the 9th of June.

Fall Show: A friendly reminder to bring back any signs still out from previous shows. Easy to update but expensive to replace. Big news for this year is the Rock Food table will be on display. Bill & Louise Pattillo were no longer able to carry the collection to area shows so now the East Texas Gem & Mineral Club owns it and through the efforts of Lowell Zoller, Keith & Toni Harmon will be moving it around the region for display at various shows – with carefully coordinated prior reservations.

See http://www.etgms.com/rock_food_table.html It will be at our show this fall. Also at our show will be Sweetie Pies food truck. They were at the spring auction and have committed to be at the fall show.

Webpage: Leslie Malakowsky is online and working on the webpage. All current content is out of date and will be replaced. Section heads need to update everything they have a vested interest in and make sure Leslie has it. There was a bit of discussion on the possibility of finding a new host for the webpage.

Auction: The final tally wasn't ready yet but an educated guess is that the auction earned the club a tidy sum toward upkeep for the lapidary lab and craft programs. Items left over from the auction will be brought to meetings and set out for silent auctions beginning this summer.

Donations: A four box collection from Becky Farr was donated to the society. Lowell is inventorying and cataloging everything. It is suggested that the collection be offered for auction to regional gem and mineral societies. Lowell says some items are very special, and letting them go separately would leave the lesser ones hard to sell alone. A motion was made and seconded to table any decision about auctioning items individually or as a set until the July meeting. The collection will be at the picnic for viewing.

Lab Update: The trim saws are working fine again now that the bearings have been replaced.

The possibility of having Saturday classes in the metalsmithing and jewelry lab is being researched.

Field Trips: Pebble Pups have scheduled field trips where club members are invited to go along. One exception is the Pebble Pups Hogg Mine field trip in LaGrange GA where they'll have full attention from Chris Painter on geology of the mine and where to search.

HGMS will be the host for the July 28th DMC field trip to Hogg Mine. Their average high temp for late July is 90.

Program: This meeting's program didn't materialize. The meeting featured lots of fellowship and snacks started early.

Bob & Ruth Kemper, Secretarial Team

New Members Who Have Joined HGMS This Year

Jan - Mandy & Billy Todd

Jan - Karen Van Bebber

Jan - Martin & Amber Heimbeck, Lukas

Feb - Anita Bynum

Apr - Jeff & Debra Lindy, Morgan, Jackson, Anna,
Rebecca Lynn

May - Norm & Sandy Ballas

May - Royal Ritchey

May - Jan Edmunds

Jun - Eddie & Robin Boyett, Anna

Rocket City Jewelers (RCJ) News

By Leslie A. Malakowsky

Now taking sign-ups for the July 11th Chainmaille Bails class. In this class, we'll create bails for pendants using jump rings and Chainmaille weaves. The kit cost is TBD, and you can pay at the meeting. To reserve your space, please contact me at (256) 755-0479.

Important: No meeting on July 4th – Independence Day!!

We had a blast making the “seeing eye” Byzantine bracelet. It was a lot of work, but well worth it. I think everyone was pleased with the results. Thanks to everyone who attended this 2-night class. A special thank you to Theresa for ordering our jump rings and organizing this class.

As we get underway with summer, many of you will be absent from RCJ for vacations and family time. Please let me know when you're going to be gone – that helps me with planning!

Lead Instructor/	Group Leader Leslie Malakowsky
Instructors	Myra Soroczak, William Aycock, Sherrie Bonin, Theresa Chivers
Kit Manager	Sherrie Bonin
Wire Supplier	Shelley Curran
Treasurer	Clara Goode
Facebook	Karen Van Bebber
Librarian	Opening
Security	Joe Bonin

Upcoming schedule:

June 27th – Clasps 1 make-up class

July 4th – No meeting

July 11th – Chainmaille bails

RCJ is open to every member of the HGMS. **If you love making jewelry, please consider joining us!** All skill levels are welcome! We meet every Wednesday from 6-9p.m. in the Paint Room (next to the Lapidary Shop) at the Huntsville-Madison County Senior Center, 2200 Drake Avenue, Huntsville.



Congratulations to Gerdy & Dave Wyatt

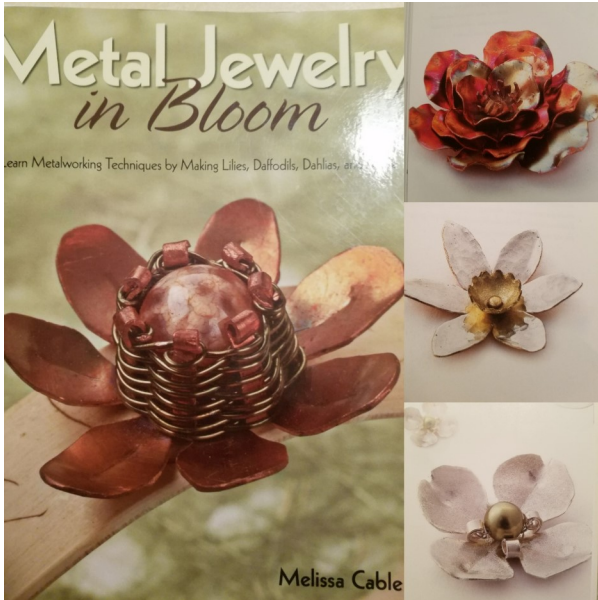
Who celebrated their 60th Wedding Anniversary on
May 17th 2018.

May you have many more of these.



Metal Smithing/Silver Group, by Kathy Bowman

Upcoming Project Class: Thursday, July 12: Making Metal Flowers



NOTE: BECAUSE OF THE JULY 4TH HOLIDAY, THE JULY CLASS WILL BE THE 2ND THURSDAY (JULY 12).

We have had a request for a class on making flowers. We will be using the book Metal Jewelry in Bloom as inspiration. There will be several patterns available from the book. The flowers can be made in various sizes and can be incorporated into jewelry or used on decorative objects. The class fee is \$5.00. If you want to use silver it will be available for purchase. You do not have to be Safety Certified to take this class as we will be using cold connections instead of soldering. Torches might be needed to anneal the metal but one of the instructors can do this for you if you have not been certified yet.

The sign up sheet for this class will be available at the Picnic and during the Thursday classes. You also may sign up by sending email to HGMS@wilddivystudio.com. As always, on nights that we do not have an official project class scheduled anyone who is certified is

invited to join us to work on your projects. Instructors are available for "one on one" instruction and help on individual projects on work session nights. Anyone who missed a particular project we have had in the past and would like to work on that project. Please notify Shelly or me and we will provide you with the kit and instructions any special tools so you can work on it during our work session nights. **Please let us know in advance if the project you want to work requires special tools or equipment we bring from home so we can be sure to have them available.**

Certification Classes: We plan to continue to do certifications on a one to three person basis during our regular Thursday night work nights instead of having one large class a few times a year. If you are interested in scheduling Metalsmithing Certification please send your name and contact information (name, email address, and phone number) to HGMS@wilddivystudio.com. We will contact you and set up a Thursday for you to come. Those who sign up will be notified when the next class will be scheduled.

Volunteer Positions *

Class Instructors:

Kathy Bowman

Shelley Curran

Toolbox Sign-outs

Chris Kalange

Inventory Manager

Opening

Store Manager

Opening

Kit Manager

Shelley Curran

Webpage & Social Media Management

Deb Neis & Linda Haynes

*Note: We are all volunteers so the schedule is subject to change.

Are there any more Fall Show yard signs still out there?

These signs are expensive and if they aren't returned, new ones will have to be made. Please check the corners of your garage to see if any from past years are lurking in dark corners or closets.

Thanks, Tony Smith



Pebble Pups
Madison County Senior Center Cafeteria
2200 Drake Ave, Huntsville AL
Brian Burgess 256-746-0641,
bburgess771@gmail.com



Our meeting on May 24th will be about Opals. I will have plenty of give-aways.

We will be going on the Steven Minkin field trip on the 12th of May. We will meet at the Jack's in Jasper at 8:45 am and leave for the site at 9 am. All information is on the Pup website.

Cane Creek Canyon, Jim Lacefield - June 23 (tentative for now) — agates and petrified wood

Hogg Mine, LaGrange GA—crystals of all sorts—July 7th

Twenty Mile Creek, Booneville MS, shark teeth

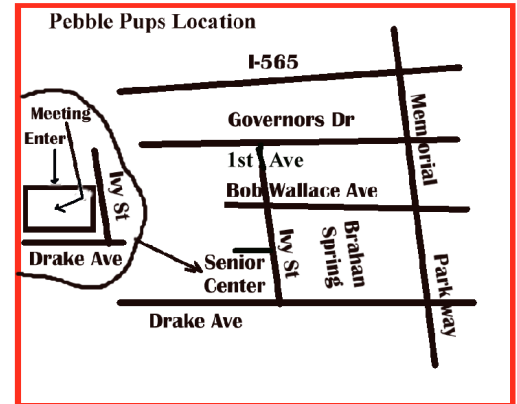
Cedar Creek fossils, near Red Bay AL—date yet to be settled

Devil's Racetrack in Huntsville—day trip to be set as it is convenient—geology hike and fossils

How about a tour of a local rock quarry?

New members are always welcome. Bring your friends.

If anyone has any questions, please contact Brian or Bill Friday



Robert Langford's Summer Schedule

Mark your Calendars for a Special 2018 Fossil Collecting Activity

Registered Professional Geologist, Robert Langford, will be present at the W. M. Browning Cretaceous Fossil Park located on Twenty Mile Creek at the Hwy 45 Bridge near Frankstown, in Prentiss County, Mississippi. Robert will be there on a voluntary basis to help novice fossil collectors, to identify their fossils, and to promote the NMGMS by handing out NMGMS information fliers. Family groups and Home Schoolers are very welcome. Boy Scouts, are you working on a BSA Geology Merit Badge? BSA Geology Merit Badge Forms are available.

Robert's remaining 2018 summer Saturday schedule will be as follows: July 21, and August 18

List of Things to bring: Families are in for a treat. This site is extremely wet; be prepared to get very wet. The creek bed is rocky and there is some glass and wire. So have the kids wear shoes that they can wear into the water and a swimsuit. They will also need to bring a change of clothes, towel, sun screen, lunch, and water to drink.

You will need sieving screens that can be made from window screening attached to a frame, but many people use kitchen colanders or the screens you get in summer beach sand toys, just something to let the sand and water through so you can sort through the coarse material to find the fossils. Bring a trowel or a scoop and a couple of small plastic bags or boxes (yogurt cups with lids will do) to keep your fossils safe.

If you need additional directions to the W. M. Browning Cretaceous Fossil Park, please contact Robert Langford at rlangford@cobbenv.com. GPS 34.5865354, -88.6323455, or 34° 35' 13", 88° 37' 55"

Editor: Here is a very informative video about this locale: <https://www.youtube.com/watch?v=ntqiXfD3wBc>

Mineral of the Month – Olivine *By Leslie A. Malakowsky*

This month's mineral was inspired by Mount Kilauea erupting on the Big Island of Hawaii! Olivine is a magnesium-iron silicate mineral with the formula $(\text{Mg}^{2+}, \text{Fe}^{2+})_2\text{SiO}_4$. It's a common mineral in dark-colored (mafic) igneous rocks, such as basalt. (Mafic describes a silicate mineral or an igneous rock that is rich in magnesium and iron. Olivine is a common rock-forming mafic mineral. Basalt is a common mafic rock. Mafic lava has a low viscosity because mafic magma has a low silica content. Therefore, water and gases can easily escape from mafic-lava volcanoes such as Mount Kilauea.)



Olivine is easily identified because of its typical bright olive-green color (for which it is named) and glassy luster. It can also be yellow to yellow-green, but when it's exposed to weathering on the ground surface, for example, this beautiful mineral can rapidly lose its appeal: it can become dull, earthy, and yellowish-to reddish-brown as the iron oxidizes.

Olivine is a member of the Olivine group of *nesosilicate* minerals. (Nesosilicates have isolated evenly-spaced silicon-oxygen tetrahedrons - the central building blocks of all silicate minerals.) Other well-known nesosilicates include garnet, zircon, topaz and kyanite.

Magnesium and iron can replace each other in various proportions as olivine forms. When this happens, olivine is said to occur as a *series* of minerals.

The two "endmembers" of the series are forsterite (the magnesium end: Mg_2SiO_4) and fayalite (the iron end: Fe_2SiO_4). The varieties of olivine in between these two ends have names, but they are rarely used because the majority of olivine samples are compositionally close to forsterite. Olivine can also include minor amounts of other elements such as manganese, nickel (thought to cause its olive-green color) and calcium.

It's common to find olivine crystals in lava from both old and new eruptions on volcanic oceanic islands. The green sand beach on the Big Island of Hawaii consists of grains of olivine weathered from local lava. (Because olivine is so susceptible to weathering, bright green grains in continental sand are most likely epidote.) The black sand beaches on Hawaii, Canary Islands, Galápagos, and so on, are mostly composed of olivine and dark components of mafic rocks such as pyroxene. There are several ways that crystals can separate out from molten lava, but United States Geological Survey scientist Wendy Stovall reported that in Mount Kilauea's eruptions, olivine crystals "just kind of fall out." And volcanologist Stanley Mertzman reported that violent lava ejections from land or sea can "produce freed individual olivine crystals that people can pick up anytime." (Source: *msn.com*) This is because silicate minerals such as olivine have a higher crystallization temperature if they are low in silica and high in magnesium/iron. So, luckily for us, olivine is one of the first minerals to crystallize from cooling lava! (The sequential order of crystallizing silicate minerals from olivine to quartz is known as "Bowen's reaction series" after the Canadian geologist Norman Bowen who first described it.)

Olivine is a very common mineral in Earth's mantle. Olivine and its variants constitute over 50% of Earth's upper mantle, and olivine is one of Earth's most common minerals by volume. Some xenoliths (inclusions in igneous rock that form as magma moves through the magma chamber and erupts) are almost entirely composed of olivine. (This type of rock is known as *dunite*.) Some of the finest gem-quality olivine has been mined from mantle rocks on Zabargad Island in the Red Sea. Olivine also occurs in "impure" metamorphic rocks such as calcite marble.

Olivine has even been discovered in meteorites, on the Moon and Mars, as a component of infant stars, and on asteroid 25143 Itokawa. Such meteorites include *chondrites* (collections of debris from our early Solar System); and *pallasites* (mixtures of iron-nickel and olivine). The presence of olivine was detected by spectral signature in samples of a comet from the Stardust spacecraft in 2006 (a robotic spacecraft launched by NASA in February 1999).

Translucent olivine is used in jewelry as a gemstone called peridot (*péridot*, the French word for olivine). It's also called chrysolite (or *chrysolithe*, from the Greek words for gold and stone). In the ancient world, about 300 B.C., peridot (then called *topazios*), was mined on St. John's Island in the Red Sea. Today peridot is mined in Arizona (main source), Arkansas, Hawaii, Nevada, and New Mexico; and in Australia, Brazil, China, Egypt, Kenya, Mexico, Myanmar (Burma), Norway (main source), Kashmir, Saudi Arabia, South Africa, Sri Lanka, and Tanzania. Peridot is sometimes mistaken for emerald and other green gems, so know what you're buying!

Olivine has a variety of modern industrial and commercial uses. The one I find the most interesting is the production of electricity by recovering the heat produced by exposing crushed olivine to weathering. Fun fact: The largest cut peridot is a 310 carat (62g) specimen in the Smithsonian Museum in Washington, D.C. Fun fact: Peridot is the August birthstone.



Light green olivine crystals in peridotite xenoliths in basalt from Arizona



Olivine grains that eroded from lava on Papakolea Beach, Hawaii

ASTRONOMY 101 - This article will begin a series of articles on the Solar System, featuring oddities which often defy explanation, but more often offer deeper understanding of how the Sun and its many companions came to be here and how they behave. The header on our newsletter states that “we will go to the Moon for a rock”, so we will take a look at those next month. Bill Friday

SATURN DAILY Cassini captures stunning view of Saturn moon Daphnis
by Staff Writers, Pasadena CA (JPL) Jan 23, 2017

The wavemaker moon, Daphnis, is featured in this view, taken as NASA's Cassini spacecraft made one of its ring-grazing passes over the outer edges of Saturn's rings on Jan. 16, 2017. This is the closest view of the small moon obtained yet.

Daphnis (5 miles or 8 kilometers across) orbits within the 42-kilometer (26-mile) wide Keeler Gap. Cassini's viewing angle causes the gap to appear narrower than it actually is, due to foreshortening.

The little moon's gravity raises waves in the edges of the gap in both the horizontal and vertical directions. Cassini was able to observe the vertical structures in 2009, around the time of Saturn's equinox (see PIA11654).

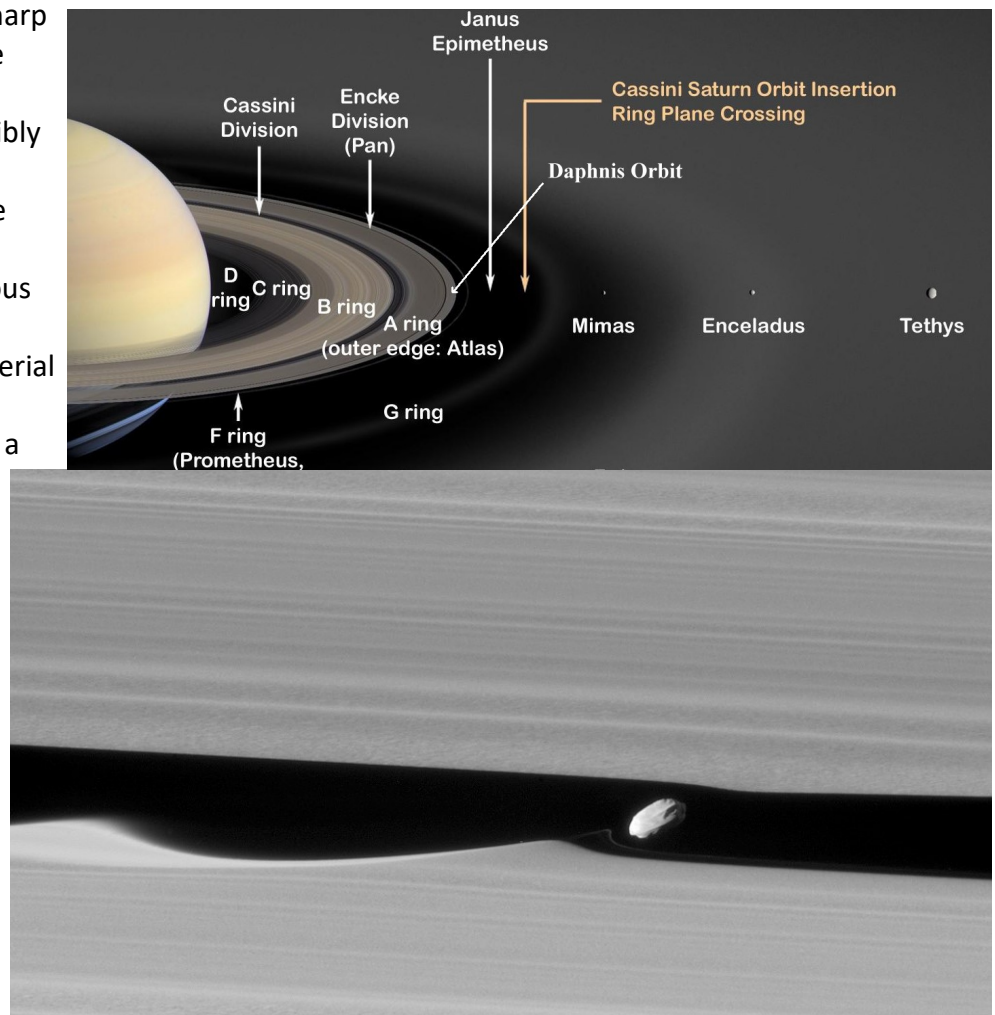
Like a couple of Saturn's other small ring moons, Atlas and Pan, Daphnis appears to have a narrow ridge around its equator and a fairly smooth mantle of material on its surface - likely an accumulation of fine particles from the rings. A few craters are obvious at this resolution. An additional ridge can be seen further north that runs parallel to the equatorial band.

Fine details in the rings are also on display in this image. In particular, a grainy texture is seen in several wide lanes which hints at structures where particles are clumping together.

In comparison to the otherwise sharp edges of the Keeler Gap, the wave peak in the gap edge at left has a softened appearance. This is possibly due to the movement of fine ring particles being spread out into the gap following Daphnis' last close approach to that edge on a previous orbit.

A faint, narrow tendril of ring material follows just behind Daphnis (to its left). This may have resulted from a moment when Daphnis drew a packet of material out of the ring, and now that packet is spreading itself out.

The image was taken in visible (green) light with the Cassini spacecraft narrow-angle camera. The view was acquired at a distance of approximately 17,000 miles (28,000 kilometers) from Daphnis and at a Sun-Daphnis-spacecraft, or phase, angle of 71 degrees. Image scale is 551 feet (168 meters) per pixel.



Brad's Bench Tips

"Bench Tips for Jewelry Making" and "Broom Casting for Creative Jewelry" are available on Amazon www.BradSmithJewelry.com For those who enjoy these bench tips, I'm happy to announce a second volume is now available on Amazon. "More Bench Tips" includes 86 additional ways to save time,



avoid frustration or improve quality at the bench. These new tips cover problems in fabrication, stone setting, casting, soldering and polishing. Browse through a couple of the new ones at <https://amazon.com/dp/B07D4B45JJ/>



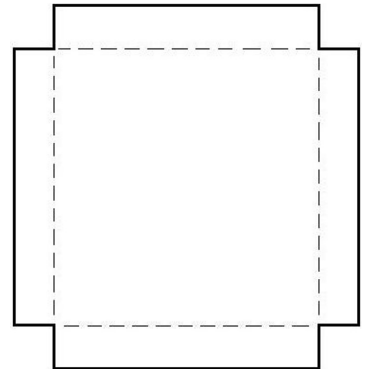
REVOLVING SOLDER PAD

Often when we're soldering we have multiple pieces on the pad or a single piece and would like to work on several sides of it during the same heat.

One of the ways to deal with this is to put your solder pad onto a turntable. That way you can rotate each piece into position when you need to or can rotate the pad to reach another side of a larger piece.

All you need to make one of these is a piece of aluminum sheet and an inexpensive turn table assembly. A good hardware store will have both, although you can usually find the aluminum in the scrap pile of a local sheet metal shop.

To build a turntable for my 6 inch solder pad, I used a seven inch square piece of aluminum sheet and cut out 1/2 inch notches from each corner. Then I used a bench vice to bend the sides along the dotted lines to form a tray that cradles the solder pad. I attached the tray to the turntable assembly with a couple small flat-head machine screws and nuts.



QUENCHING

Do you hear that little hiss when some jewelers drop a hot piece from soldering directly into the pickle? That hiss sends small droplets of acid into the air that can rust nearby tools and can't be all that good to breathe. To avoid this, I keep a coffee cup of water at the solder station to cool a soldered piece before dumping it into the pickle. It's also useful for annealing metals and for cooling off tweezers.

A Young Rockhound does well - a father's well deserved brag, by Darrel Murphy, Sale Creek TN

A few weeks ago at our daughter Trudie's senior class awards ceremony one of her teachers got up and said "this student turned in all of the assignments" and then there was a long pause as all the parents looked around knowing that it was not going to be their kid and when they called Trudie's name I was thinking I wish they would announce the name first so I would know to hit the record button on my camera. The expressions on peoples faces were priceless. Another award they gave her was called the Citizen Scientist where it was proclaimed that where ever Trudie goes she will always be a scientist. She ended up with a total of seven awards that night including one from the University of Alabama for academic excellence for the college classes she has been taking online and on campus. During her junior year she took the college gateway class online and qualified to start taking actual college credit classes with Alabama's wonderful Early College program. Last summer she spent a month living on campus and got to take Geology 101, she sent a photo of her self standing under the giant word GEOLOGY cut in stone above the big door to her favorite building with the message to me "I love college". Later that week she sent another message that she had spent the entire lab teaching mineral identification to all the other "older" college students, she was doing a better job than the lab instructor so they just let her have it. She complained that college students didn't know anything about rocks and minerals and a lot of students were barely making passing grades on the tests while she was making A+ grades. I tried to explain that her grade can actually affect the other students grades if they use the "curve" to improve the average grade of a lot of lower scores and that she was "busting the curve". She didn't seem to think that was her problem. She is now graduating from high school with 18 college credit hours (all A's) and has been accepted to attend the University of Alabama this fall.



Dixie Mineral Council Field Trips

The Southeast Federation of Mineralogical Societies, Inc



The Friendly Federation - Founded in 1976 to serve
DMC Program of the SFMS Field Trip Committee
Copyright © All rights reserved.

An Official Field Trip of the Huntsville Gem & Mineral Society—Host

Saturday July 28th, 2018 9:00 AM – 5:00 PM

Hogg Mine, LaGrange, Troup County, GA

(Aquamarine, Rose Quartz, Smoky Quartz, Tourmaline, Beryl, Amethyst)

Description and Collecting: The Hogg Mine started out as the Oxford Mine in 1942 to mine beryl to produce beryllium. Commercial operations shut down in 1960. The site has been opened off and on since then for specimen mining and is currently managed by Chris Painter. The site is a surface mine pit approximately 650 feet long with an east – west orientation. The parking area is at the east end of the pit. As you enter the pit from the parking area there is a trench approximately 150 feet long and to your right. Here has been found large green Aquamarine beryl and pockets of green Aquamarine beryl. As you enter the main pit area, there is a tailing or spoil pile to your left that came out of the pit in front of you. There has been several large nice gemmy Aquamarine beryl specimens come from this area. The main pit in front of you has a plethora of treasures, Rose Quartz, Smoky Quartz, banded Quartz, Beryl in matrix with the quartz, Tourmaline in matrix with the quartz, etc. The last area of note is at the western end at the back of the pit. There has been a new smaller pit dug in the last year and some very nice Blue Aquamarine Beryl has been found. The new pit was dug because an old drilling report had indicated that Amethyst was found. There are pieces of Amethyst coming from the new pit.

Fee: 17 years old and up are \$35 per person, 16 years old and younger dig for free. The mine also cooks hamburgers and hot dogs and has drinks. Lunch plate is \$8.00

Tools: Bring all the tools you have: pick, shovel, screen, rock hammer, hand sledge, rock chisel, bucket, hand cart, etc. The Hogg does sale some tools in limited quantities. It would be a good idea to bring an extra change of clothes. The pit can be muddy and wet.

Where we will meet: Meet at McDonald's at 2408 Whitesville St, LaGrange, GA 30240. This is at Exit 13 on Interstate 85 in LaGrange.

When: I would suggest arriving at McDonalds as early as 8:00 am, although you can arrive earlier. This will give you time to pay and fill out the required paper work. At 8:15 am the first caravan will be going to the mine. The first to arrive and sign in will be in the first caravan. The mine is approximately 3 miles from McDonalds. If you do arrive late and no one from the mine is at McDonalds, texted or call the number I will provide below.

Directions and Drive Time: The best way to determine driving directions and time is to enter the McDonalds address above into the directions destination block in Google Maps and enter your home address in the starting point block. GPS 32° 59' 29", 85° 01' 50" / 32.9914014°, -85.029692°

Contact Information: Brian Burgess Cell#: (256) 479-2993 Email: bburgess771@gmail.com

June Birthdays

1 Bryce Bills	18 Greg Somsel
2 Shoshannah Bellamy	19 Linda Sue Reed
3 James Honey	22 Gavin Crunk
4 Elizabeth Kowalczyk	22 Edward Hunneycutt
4 Tim Crumpton	23 Chris Brantley
5 Emma Allen	23 Jonathan Kowalczyk
5 Jeffrey Wagner	24 Tonya Sitko
7 Nancy Hosmer	25 Caryl Jean Nixon
9 Austin Gulliver	26 David O'Dell
12 Julia Priest	26 Roger Broussard
15 Matthew Kowalczyk	27 Dianna O'Dell
15 Al Moebes	28 Lori Willhoite



Anniversaries

June
Pearl

5 David & Karen Bath	21 Lawrence & Diana Nelms
7 Bill Sweetman	22 Mike & Karon Baerlin
8 Charlie & Lori Willhoite	22 Margaret & Grady Harmon
9 Jimi & Tonya Sitko	23 Tom & Alicia Detwiler
12 Wayne & Polly Falkenberg	24 Dennis & Patty Jo Adomatis
13 John & Ivey Cook	29 Caryl & David Nixon
19 Michael & Sheila Cape	30 William Aycock

July Birthdays

2 Katie Beth Allen	11 Emma Steelman
2 Melissa King	12 Lucy Allen
5 Dolores Kuettner	12 Kathryn McCullough
6 Isaac Burgess	13 Linda Aycock
6 AnneMarie Hall	13 Jerry McDaniel
6 Ken McCormick	14 Beth Durham
6 Samantha Steele	19 Erick Finckenor
7 John Cofield	21 John Lindberg
7 Tom Detwiler	22 Mindy Schell
8 Helen Thomas	25 Sharon Bedard
9 Liz Cooper	26 Fritz Detwiler
10 Sarah Jennings	26 Clara Goode
11 Elizabeth Raines	27 Angela Kowalczyk
	30 Bruce Kowalczyk



Anniversaries

July
Ruby

3 Jim & Bonnie Treadway	23 Clara Hayes
11 David & Nancy Hosmer	25 Sam & Lindsey Lewis
13 Linda Aycock	26 Elroy Walker
13 Jerry & Cynthia McDaniel	28 Steve & Sheila Tesh
22 Allen & Sharon Brantley	31 Toni Robert

June 2018 - Senior Center Lapidary Lab Schedule

Lapidary, Silver Jewelry and Wood Carving—

To use lapidary equipment, you must be certified unless a licensed instructor is present
- currently: Bill Friday, Joe Bonin, & Michael Cape

Monday	7:30am-9:00am	Open Lab: Lapidary, certified HGMS 60+
	9:00am- Noon	Silver Jewelry - Ron West, Instructor - Seniors & HGMS 60+
	Noon-4:30pm	Open Lab: Lapidary, certified HGMS 60+
Tuesday	7:30am-9:00am	Open Lab: Lapidary, certified HGMS 60+
	9:00am—Noon	Silver Jewelry - Ron West, Instructor - Seniors & HGMS 60+
	Noon -3:00 pm	Silver Jewelry- Terry Clarke, Instructor - Seniors & HGMS 60+
	3:00pm-4:30 pm	Open Lab: Lapidary, certified HGMS 60+
	6:00pm-9:00pm	Open Lapidary & Open Jewelry - certified HGMS 18+
Wednesday	7:30am-4:30 pm	Open Lab: Lapidary - certified HGMS 60+
	6:00pm-9:00pm	Lapidary & Jewelry Classes - certified HGMS 18+
Thursday	7:30am-9:00am	Open Lab: Lapidary - certified HGMS 60+
	9:00am-11:30am	Silver Jewelry- Ron West, Instructor - Seniors & HGMS 60+
	Noon-3:00pm	Wood Carving - Copeland, Instructor - Seniors & HGMS 60+
	3:00pm-4:30 pm	Open Lab: Lapidary -certified HGMS 60+
	5:30pm-9:00pm	Metal Smithing & Jewelry Classes— certified HGMS 18+
Friday	7:30am-12:00am	Open Lab: Lapidary - certified Seniors & HGMS 60+

2018 HUNTSVILLE GEM & MINERAL SOCIETY OFFICERS

President—Bill Friday—256-527-8227— bill.friday@earthlink.net
 Vice President— Michael Cape— 256-890-9172— macape@knology.net
 Recording Secretary: Bob & Ruth Kemper—256-489-3684— bob_kemper@yahoo.com
 Treasurer: Clara Goode, 256-883-9194—clarag1964@gmail.com
 Newsletter Editor: Bill Friday - 256-527-8227—bill.friday@earthlink.net
 Directors at Large: Steve Young— 334-300-5408—taegu_steve@hotmail.com
 Gene Powers—256-751-3067—genepowersgddm@gmail.com
 Michael Soroczak—256-446-9938—Soroczak@yahoo.com
 Ex Officio - Brian Burgess— 256-746-0641— bburgess771@gmail.com
 Federation Liaison - Mark Habercom - 256-340-8604, mhabercom@energize.net

2018 COMMITTEE CHAIRS

Membership: Bill Friday— 256-527-8227 bill.friday@earthlink.net 2508 Excalibur Dr. Huntsville AL 35803	Property: Chris Kalange, 256-883-7627 ckalange@comcast.net
Scrapbook: Dianna O'Dell, 256-828-1813	Program Chair—Myra Soroczak 256-446-9938 - Soroczak@yahoo.com
Librarian: Leslie Malakowsky, 256-755-0479	Show Chair: Tony Smith, 256-603-3095. tsmith@erc-incorporated.com
Club Publicity: open	Show Vendor Chair: Lowell Zoller, 256-534-8803 Lzol@comcast.net
Field Trips: Brian Burgess, 256-746-0641 bburgess771@gmail.com	Show Volunteer Chair: Joe Bonin, 256-859-9711 sixjsonef@yahoo.com
Hospitality: Caryl Nixon 256-426-5061 caryl.nixon@outlook.com	Show Publicity Chair: Tony Smith, 256-852-3210
Mineral ID: Wayne Falkenberg— falkenbergwp@comcast.net (William Holland offers a class for this)	Show Treasurer: Clara Goode, 256-883-9194 clarag1964@gmail.com

PURPOSE OF THE SOCIETY: The Huntsville Gem & Mineral Society is a non-profit educational organization for people interested in mineralogy, geology, paleontology, and related lapidary arts. Its primary purpose is the education of the members and the general public in these areas. This purpose is accomplished through programs, shows, lectures to school children and organizations, and exchange of rocks, minerals and artifacts.

DUES: Annual dues are \$15.00 per person, \$20.00 per family, and are due on January 1st of each year

Membership Applications may be found at our webpage www.Huntsvillegms.org, at meetings, or the lab

MEETING PLACE: Huntsville/Madison County Senior Center, 2200 Drake Ave, Huntsville, AL at 6:30pm.

DATE: Fourth Tuesday of each month except for April Auction, June picnic, Christmas Dinner and major holidays.

Federation Liaison: Huntsville Gem & Mineral Society, 3015 Monterey Dr., SW, Decatur AL 35603 Attn Mark Habercom

**The Society is affiliated with the American Federation of Mineralogical Societies ,
the Southeast Federation of Mineralogical Societies, and the Dixie Mineral Council**

Federation Newsletters:

SFMS: www.amfed.org/sfms/lodestar_newsletter.html

AFMS: www.amfed.org/news/default.htm

DMC: http://www.amfed.org/sfms/_dmc/dmc.htm



2018-19 CALENDAR

- 24 Jul '18 - Regular HG&MS Meeting, Madison County Senior Center,
2200 Drake Ave, Huntsville, AL 6:30pm
- 28 Aug '18 - Regular HG&MS Meeting, Madison County Senior Center,`
2200 Drake Ave, Huntsville, AL 6:30pm
- 25 Sep '18 - Regular HG&MS Meeting, Madison County Senior Center,
2200 Drake Ave, Huntsville, AL 6:30pm
- 12-14 Oct '18 Annual Fall Gem, Jewelry, & Mineral Show
Jaycees Bldg, 2180 Airport Rd, Huntsville AL
- 23 Oct '18 - Regular HG&MS Meeting, Madison County Senior Center,
2200 Drake Ave, Huntsville, AL 6:30pm
- 27 Nov '18 Regular HG&MS Meeting, Madison County Senior Center,
2200 Drake Ave, Huntsville, AL 6:30pm
- 11 Dec '18 Annual Christmas Dinner—date tentative, place to be determined
No Regular HGMS meeting
- 22 Jan '19 Regular HG&MS Meeting, Madison County Senior Center,
2200 Drake Ave, Huntsville, AL 6:30pm
- 26 Feb '19 - Regular HG&MS Meeting, Madison County Senior Center,
2200 Drake Ave, Huntsville, AL 6:30pm
- 26 Mar '19 - Regular HG&MS Meeting, Madison County Senior Center,
2200 Drake Ave, Huntsville, AL 6:30pm

<p>Deadline for Next Newsletter— July 13, 2018</p>
--

Rocket City Rocks & Gems

Bill Friday, Editor
2508 Excalibur Dr.
Huntsville, AL 35803

HGMS June 2018

Dated Material
Do not Delay